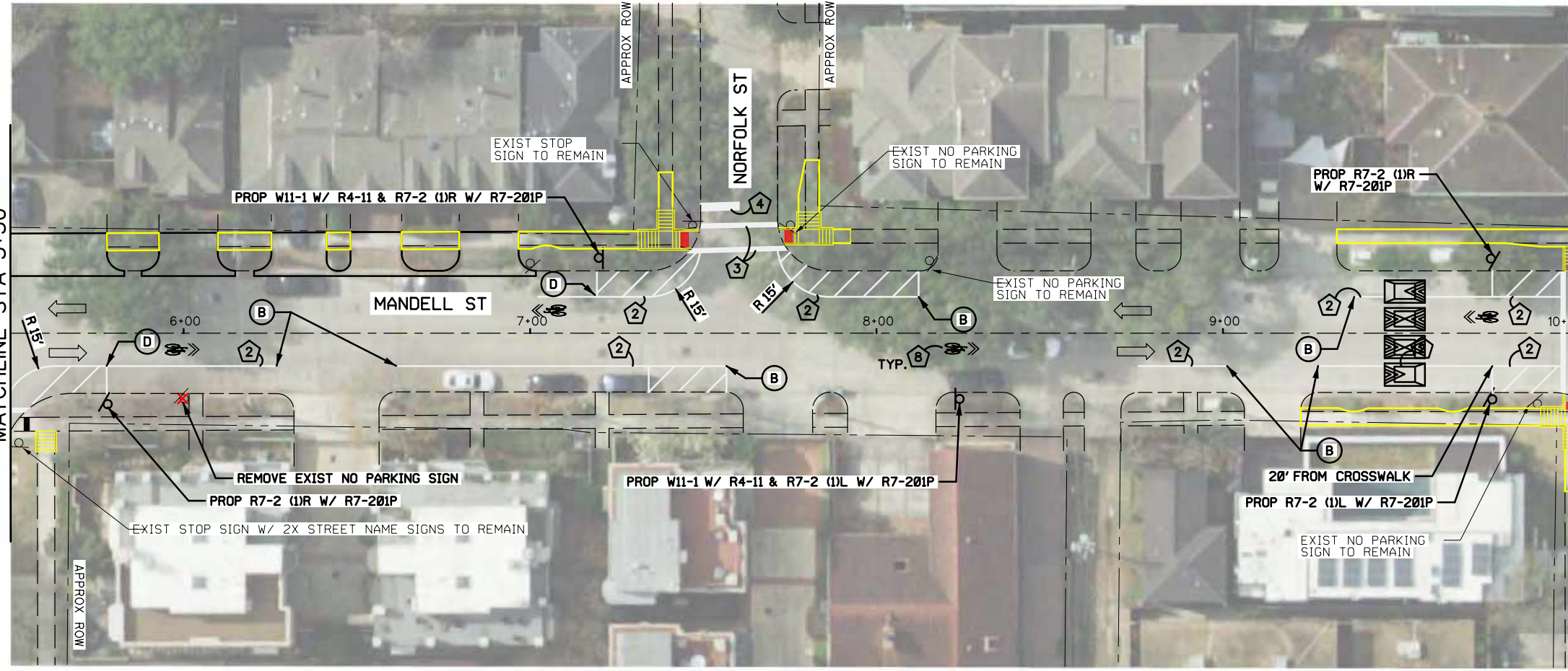
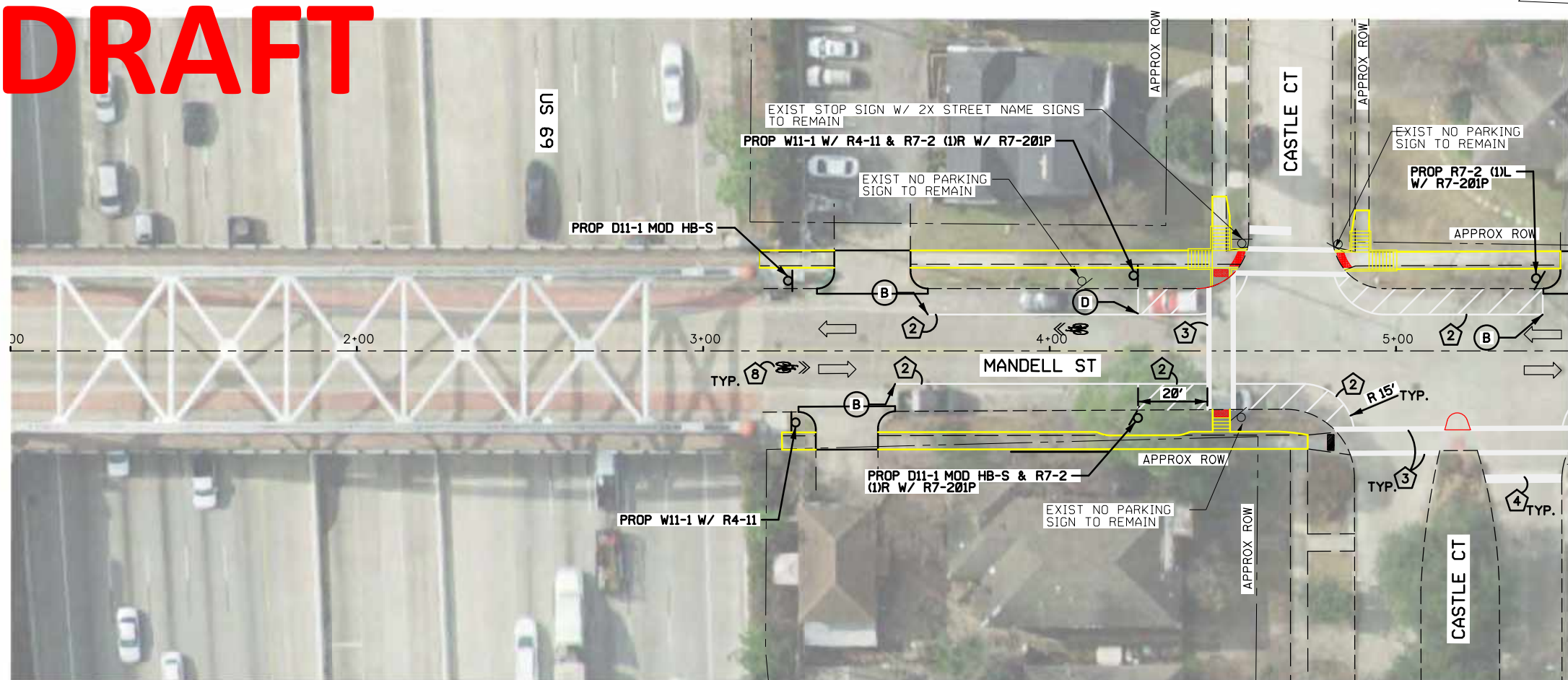


DRAFT



| LEGEND | |
|--------------------------------|---|
| 1 | REFL PAV MRK (W) 4" (SLD) |
| 2 | REFL PAV MRK (W) 6" (SLD) |
| 3 | REFL PAV MRK (W) 12" (SLD) |
| 4 | REFL PAV MRK (W) 24" (SLD) |
| 5 | REFL PAV MRK (Y) 4" (SLD) |
| 6 | REFL PAV MRK TY C PREFORM SYMBOL (WHITE/GREEN) |
| 7 | DBL REFL PAV MRK (Y) 4" (SLD) WITH REFL RAISED PAV MRK (TY A) @ 40' SPACING |
| 8 | REFL PAV MRK WORD OR SYMBOL (W) |
| 9 | 9" YIELD TRIANGLE |
| 10 | PRECAST CONCRETE CURB WITH FLEX POST |
| 11 | DBL REFL PAV MRK (Y) 4" (SLD) WITH REFL RAISED PAV MRK (TY A) @ 20' SPACING |
| 12 | REFL PAV MRK (W) 4" (2' SLD, 6' GAP) |
| 13 | BIKE CONFLICT MARKING |
| 14 | REFL PAV MRK (W) 4" (SLD) WITH REFL RAISED PAV MRK (TY A) @ 20' SPACING |
| 15 | REFL PAV MRK (Y) 4" (SLD) & (Y) 4" (10' SLD, 30' GAP) WITH REFL RAISED PAV MRK (TY A) @ 40' SPACING |
| 16 | REFL PAV MRK (Y) 4" (10' SLD, 30' GAP) |
| 17 | REFL PAV MRK (W) 4" (10' SLD, 30' GAP) WITH REFL RAISED PAV MRK (TY R) @ 40' SPACING |
| — PRECAST CURB (TY A, B, OR C) | |
| • FLEX POST | |

- NOTES
- SEE SHEET 55 FOR SPEED CUSHION STRIPING DETAIL.
 - SEE SHEETS 15-16 FOR CROSS SECTIONS.

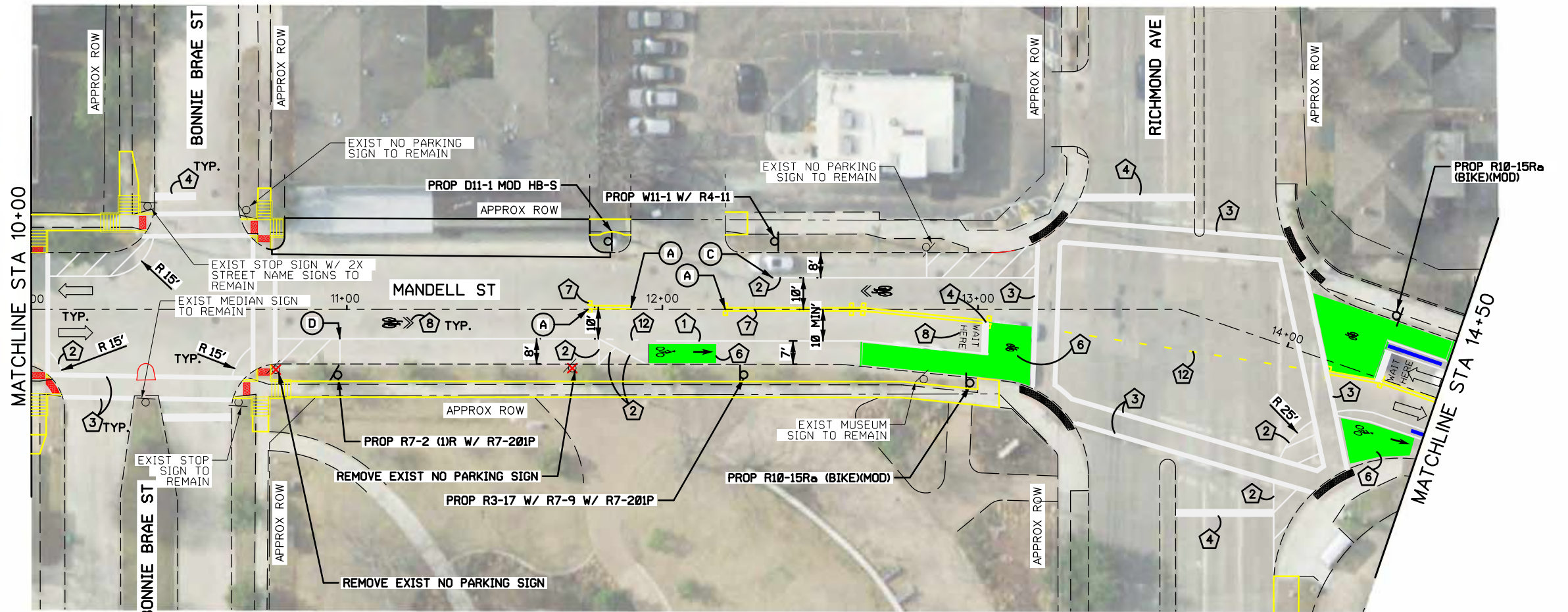
| LOCATION LEGEND | |
|-----------------|---------------------------------|
| (A) | MATCH DRIVEWAY EDGE |
| (B) | MATCH CURB RETURN |
| (C) | 15' FROM DRIVEWAY EDGE |
| (D) | 30' FROM INTERSECTING CURB EDGE |

0' 20' 40'
SCALE IN FEET

| | |
|---|---|
| TRAFFIC ENGINEERS, INC. 712 MAIN ST, Suite 950 Houston, TX 77022 www.TrafficEngineers.com Texas PE Firm Reg. #F-3158 | INTERIM REVIEW ONLY Document incomplete: not intended for permit, bidding or construction. |
| | Engineer: SARAH L. WETMORE P.E. Serial No. 130442 |
| | Firm: TRAFFIC ENGINEERS, INC. Firm No. F-3158 |
| | SURVEYED BY: Date: 9/23/2022 |

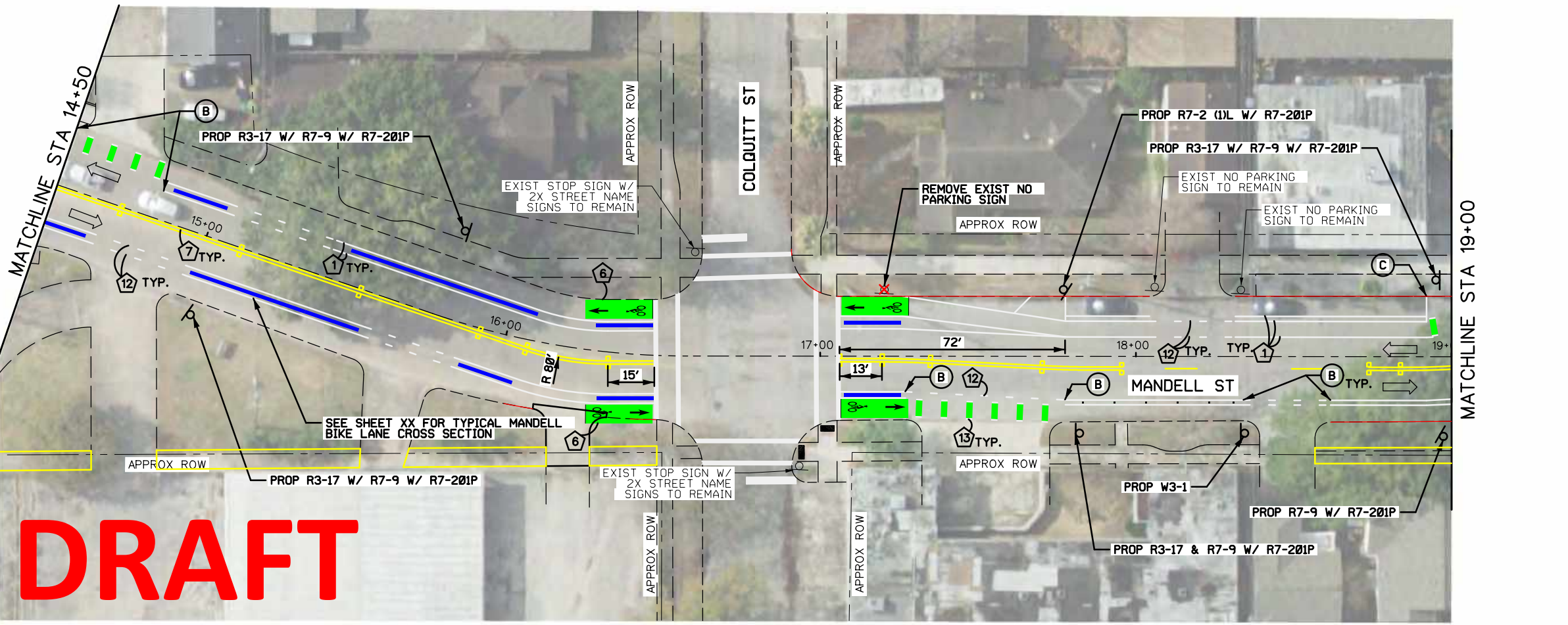
| | |
|---|------------------------------|
| CITY OF HOUSTON HOUSTON PUBLIC WORKS | |
| W. DALLAS STREET AND MANDELL STREET IMPROVEMENTS | |
| SIGNING AND PAVEMENT MARKING LAYOUT | |
| BEGIN PROJECT TO STA 10+00 SHEET 1 OF 6 | |
| WBS NUMBER N-T27000-002-7 | FOR CITY OF HOUSTON USE ONLY |
| DRAWING SCALE AS NOTED | |
| CITY OF HOUSTON PM SHAPOOR GOLSHAN | |
| SHEET NO. 64 OF 162 | |

Pen Table: TEL_Color.tbl
 File Name: E:\Dropbox (Traffic Engineers)\Clients\Gauge Engineering\TIRZ 27 Montrose\Design Projects\Dallas-Mandell\05. Design\02. Plansheets\SPM - Mandell ST - 02.dgn
 9/23/2022 9:42:13 AM _USER_



| LEGEND | |
|--------------------------------|---|
| 1 | REFL PAV MRK (W) 4" (SLD) |
| 2 | REFL PAV MRK (W) 6" (SLD) |
| 3 | REFL PAV MRK (W) 12" (SLD) |
| 4 | REFL PAV MRK (W) 24" (SLD) |
| 5 | REFL PAV MRK (Y) 4" (SLD) |
| 6 | REFL PAV MRK TY C PREFORM SYMBOL (WHITE/GREEN) |
| 7 | DBL REFL PAV MRK (Y) 4" (SLD) WITH REFL RAISED PAV MRK (TY A) @ 40' SPACING |
| 8 | REFL PAV MRK WORD OR SYMBOL (W) |
| 9 | 9" YIELD TRIANGLE |
| 10 | PRECAST CONCRETE CURB WITH FLEX POST |
| 11 | DBL REFL PAV MRK (Y) 4" (SLD) WITH REFL RAISED PAV MRK (TY A) @ 20' SPACING |
| 12 | REFL PAV MRK (W) 4" (2' SLD, 6' GAP) |
| 13 | BIKE CONFLICT MARKING |
| 14 | REFL PAV MRK (W) 4" (SLD) WITH REFL RAISED PAV MRK (TY A) @ 20' SPACING |
| 15 | REFL PAV MRK (Y) 4" (SLD) & (Y) 4" (10' SLD, 30' GAP) WITH REFL RAISED PAV MRK (TY A) @ 40' SPACING |
| 16 | REFL PAV MRK (Y) 4" (10' SLD, 30' GAP) |
| 17 | REFL PAV MRK (W) 4" (10' SLD, 30' GAP) WITH REFL RAISED PAV MRK (TY R) @ 40' SPACING |
| — PRECAST CURB (TY A, B, OR C) | |
| • FLEX POST | |

- NOTES
1. SEE SIGNAL DESIGN SHEETS FOR 'RIGHT TURN ON RED' SIGNAGE PLACEMENT.
 2. SEE SHEET 76 FOR DETAIL OF BIKE LANE AT SIGNAL.
 3. SEE SHEET 76 FOR DETAIL OF BIKE LANE WITH PARKING.



| LOCATION LEGEND | |
|-----------------|---------------------------------|
| (A) | MATCH DRIVEWAY EDGE |
| (B) | MATCH CURB RETURN |
| (C) | 15' FROM DRIVEWAY EDGE |
| (D) | 30' FROM INTERSECTING CURB EDGE |

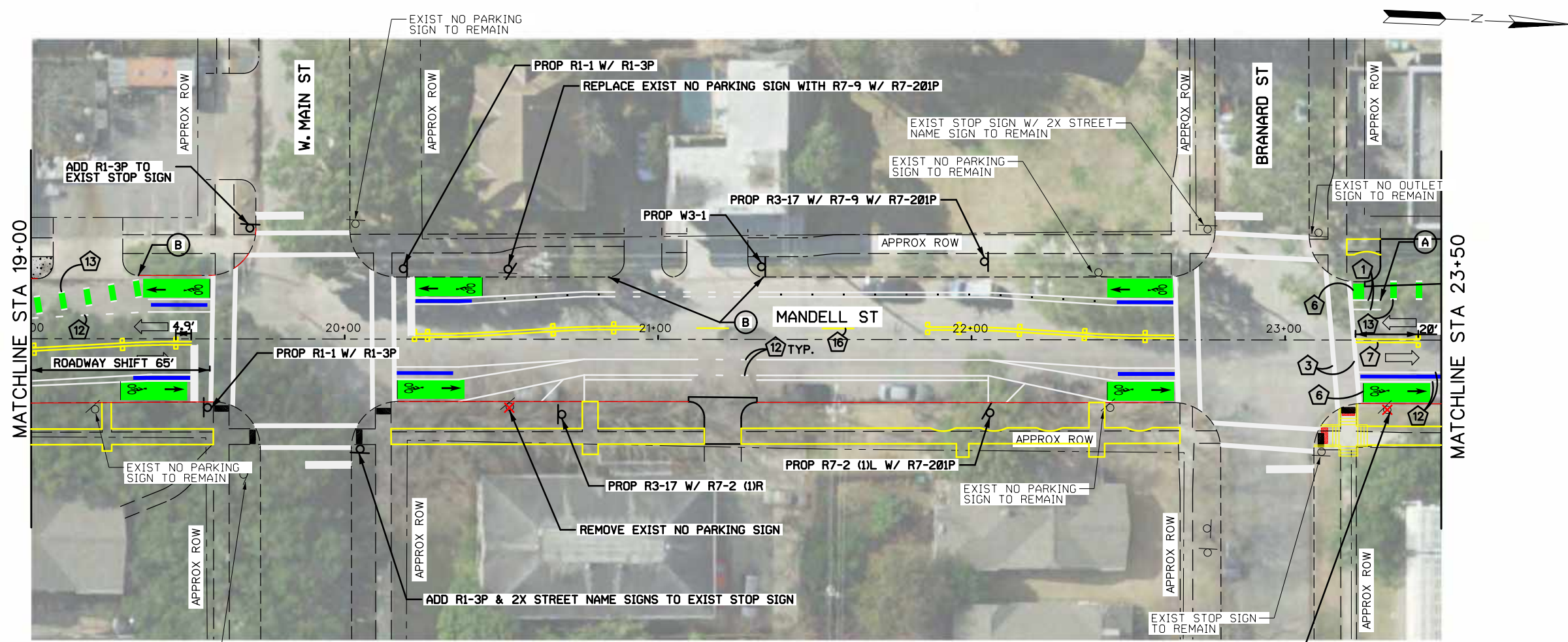
0' 20' 40'
SCALE IN FEET

DRAFT

| | |
|---|---|
| TRAFFIC ENGINEERS, INC. 712 MAIN ST, Suite 950 Houston, TX 77022 www.TrafficEngineers.com Texas PE Firm Reg. #F-3158 | INTERIM REVIEW ONLY Document incomplete: not intended for permit, bidding or construction. |
| | Engineer: SARAH L. WETMORE P.E. Serial No. 130442 |
| | Firm: TRAFFIC ENGINEERS, INC. Firm No. F-3158 |
| | SURVEYED BY: Date: 9/23/2022 |

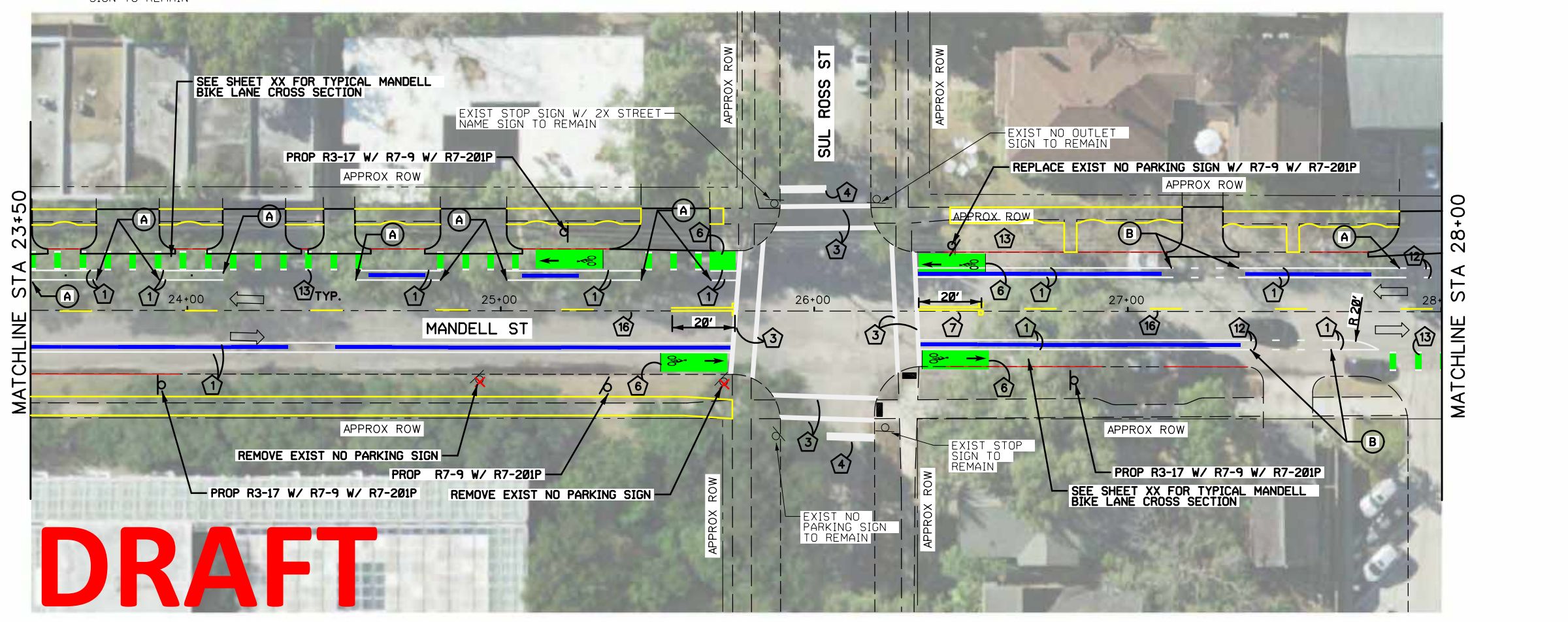
| | |
|---|------------------------------|
| CITY OF HOUSTON HOUSTON PUBLIC WORKS | |
| W. DALLAS STREET AND MANDELL STREET IMPROVEMENTS | |
| SIGNING AND PAVEMENT MARKING LAYOUT | |
| STA 10+00 TO STA 19+00 | |
| SHEET 2 OF 6 | |
| WBS NUMBER N-T27000-002-7 | FOR CITY OF HOUSTON USE ONLY |
| DRAWING SCALE AS NOTED | |
| CITY OF HOUSTON PM SHAPOOR GOLSHAN | |
| SHEET NO. 65 OF 162 | |

Pen Table: TEL_Color.tbl
 File Name: E:\Dropbox (Traffic Engineers)\Clients\Gauge Engineering\TIRZ 27 Montrose\Design\Projects\Dallas-Mandell\05_Design\02_Plansheets\SPM - Mandell ST - 03.dgn
 9/23/2022 9:42:17 AM _USER_



| LEGEND | |
|--------------------------------|---|
| 1 | REFL PAV MRK (W) 4" (SLD) |
| 2 | REFL PAV MRK (W) 6" (SLD) |
| 3 | REFL PAV MRK (W) 12" (SLD) |
| 4 | REFL PAV MRK (W) 24" (SLD) |
| 5 | REFL PAV MRK (Y) 4" (SLD) |
| 6 | REFL PAV MRK TY C PREFORM SYMBOL (WHITE/GREEN) |
| 7 | DBL REFL PAV MRK (Y) 4" (SLD) WITH REFL RAISED PAV MRK (TY A) @ 40' SPACING |
| 8 | REFL PAV MRK WORD OR SYMBOL (W) |
| 9 | 9" YIELD TRIANGLE |
| 10 | PRECAST CONCRETE CURB WITH FLEX POST |
| 11 | DBL REFL PAV MRK (Y) 4" (SLD) WITH REFL RAISED PAV MRK (TY A) @ 20' SPACING |
| 12 | REFL PAV MRK (W) 4" (2' SLD, 6' GAP) |
| 13 | BIKE CONFLICT MARKING |
| 14 | REFL PAV MRK (W) 4" (SLD) WITH REFL RAISED PAV MRK (TY A) @ 20' SPACING |
| 15 | REFL PAV MRK (Y) 4" (SLD) & (Y) 4" (10' SLD, 30' GAP) WITH REFL RAISED PAV MRK (TY A) @ 40' SPACING |
| 16 | REFL PAV MRK (Y) 4" (10' SLD, 30' GAP) |
| 17 | REFL PAV MRK (W) 4" (10' SLD, 30' GAP) WITH REFL RAISED PAV MRK (TY R) @ 40' SPACING |
| — PRECAST CURB (TY A, B, OR C) | |
| • FLEX POST | |

NOTES
 1. SEE SHEET 76 FOR BIKE LANE WITH PARKING DETAIL.



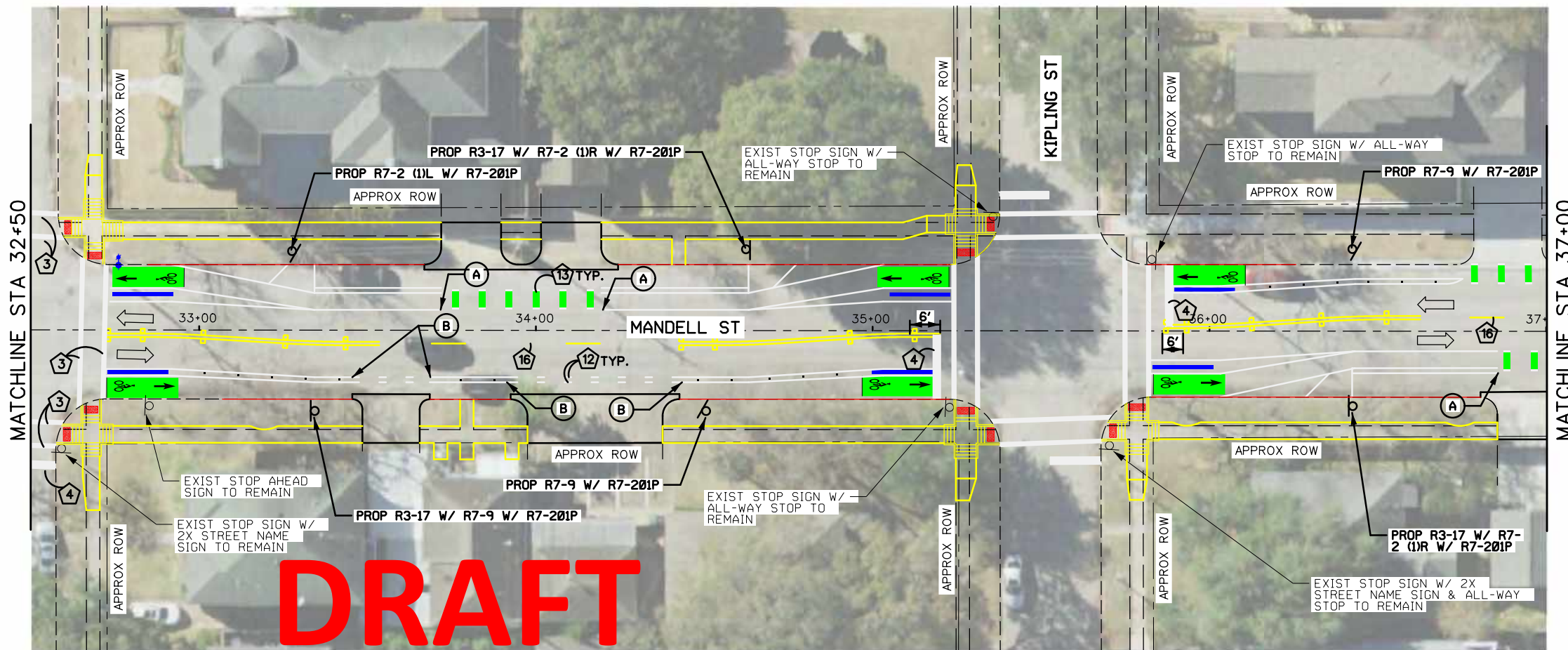
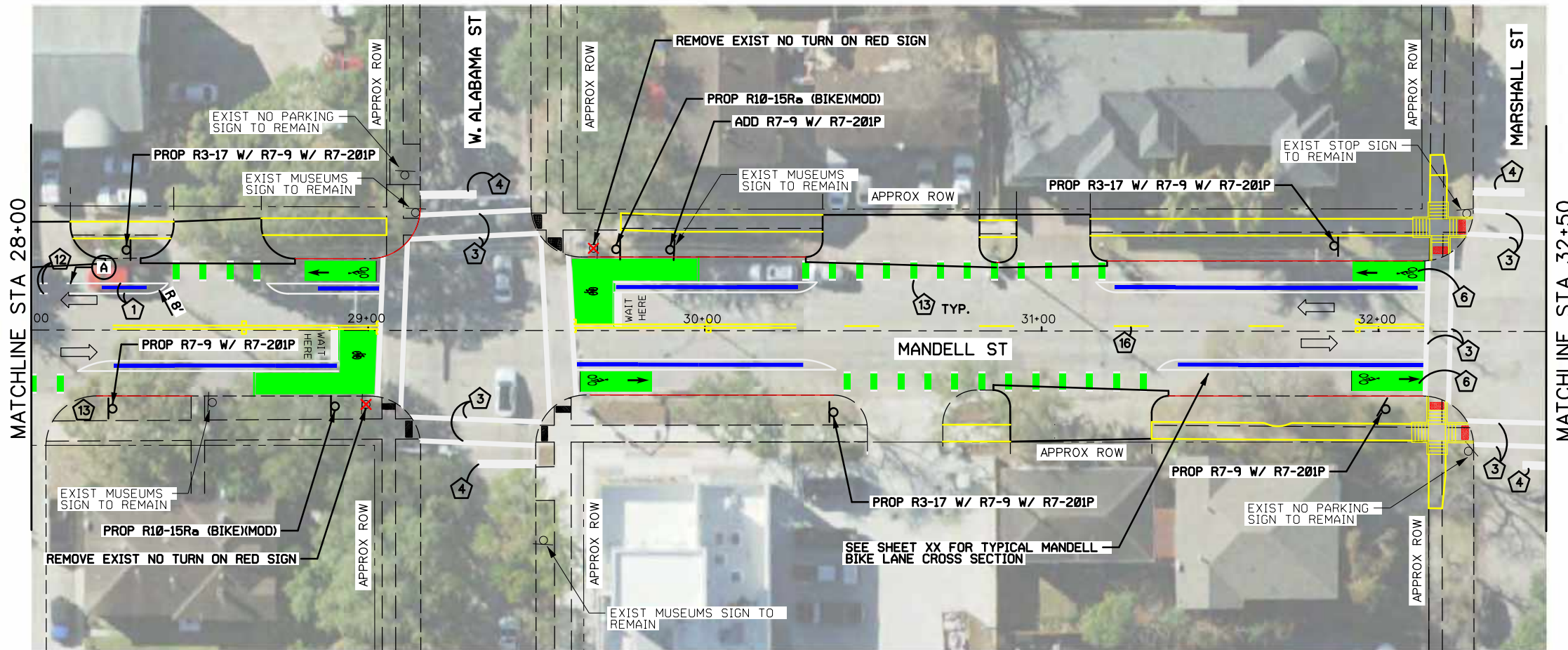
| LOCATION LEGEND | |
|-----------------|---------------------------------|
| (A) | MATCH DRIVEWAY EDGE |
| (B) | MATCH CURB RETURN |
| (C) | 15' FROM DRIVEWAY EDGE |
| (D) | 30' FROM INTERSECTING CURB EDGE |

0' 20' 40'
SCALE IN FEET

DRAFT

| | | |
|--|--|--|
| TRAFFIC ENGINEERS, INC. 712 MAIN ST, Suite 950 Houston, TX 77022 www.TrafficEngineers.com Texas PE Firm Reg. #F-3158 | | INTERIM REVIEW ONLY Document incomplete: not intended for permit, bidding or construction. Engineer: SARAH L. WETMORE P.E. Serial No. 130442 Firm: TRAFFIC ENGINEERS, INC. Firm No. F-3158 Date: 9/23/2022 |
| CITY OF HOUSTON HOUSTON PUBLIC WORKS | | |
| W. DALLAS STREET AND MANDELL STREET IMPROVEMENTS SIGNING AND PAVEMENT MARKING LAYOUT STA 19+00 TO STA 28+00 | | |
| WBS NUMBER N-T27000-002-7 | | FOR CITY OF HOUSTON USE ONLY |
| DRAWING SCALE AS NOTED | | |
| CITY OF HOUSTON PM SHAPOOR GOLSHAN | | |
| SHEET NO. 66 OF 162 | | |

Pen Table: TEL_Color.tbl
 File Name: E:\Dropbox (Traffic Engineers)\Clients\Gauge Engineering\TIRZ 27 Montrose\Design Projects\Dallas-Mandell\05. Design\02. Plansheets\SPM - Mandell ST - 04.dgn
 9/23/2022 9:42:21 AM _USER_



DRAFT

LEGEND

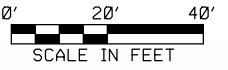
- 1 REFL PAV MRK (W) 4" (SLD)
- 2 REFL PAV MRK (W) 6" (SLD)
- 3 REFL PAV MRK (W) 12" (SLD)
- 4 REFL PAV MRK (W) 24" (SLD)
- 5 REFL PAV MRK (Y) 4" (SLD)
- 6 REFL PAV MRK TY C PREFORM SYMBOL (WHITE/GREEN)
- 7 DBL REFL PAV MRK (Y) 4" (SLD) WITH REFL RAISED PAV MRK (TY A) @ 40' SPACING
- 8 REFL PAV MRK WORD OR SYMBOL (W)
- 9 9" YIELD TRIANGLE
- 10 PRECAST CONCRETE CURB WITH FLEX POST
- 11 DBL REFL PAV MRK (Y) 4" (SLD) WITH REFL RAISED PAV MRK (TY A) @ 20' SPACING
- 12 REFL PAV MRK (W) 4" (2' SLD, 6' GAP)
- 13 BIKE CONFLICT MARKING
- 14 REFL PAV MRK (W) 4" (SLD) WITH REFL RAISED PAV MRK (TY A) @ 20' SPACING
- 15 REFL PAV MRK (Y) 4" (SLD) & (Y) 4" (10' SLD, 30' GAP) WITH REFL RAISED PAV MRK (TY A) @ 40' SPACING
- 16 REFL PAV MRK (Y) 4" (10' SLD, 30' GAP)
- 17 REFL PAV MRK (W) 4" (10' SLD, 30' GAP) WITH REFL RAISED PAV MRK (TY R) @ 40' SPACING
- PRECAST CURB (TY A, B, OR C)
- FLEX POST

NOTES

1. SEE SIGNAL DESIGN SHEETS FOR 'RIGHT TURN ON RED' SIGNAGE PLACEMENT.
2. SEE SHEET 76 FOR DETAIL OF BIKE LANE AT SIGNAL.
3. SEE SHEET 76 FOR DETAIL OF BIKE LANE WITH PARKING.
4. EXISTING 'NO RIGHT TURN ON RED' SIGNS ON W ALABAMA MAST ARMS TO REMAIN. SEE SHEET 113 FOR DETAILS.

LOCATION LEGEND

- (A) MATCH DRIVEWAY EDGE
- (B) MATCH CURB RETURN
- (C) 15' FROM DRIVEWAY EDGE
- (D) 30' FROM INTERSECTING CURB EDGE



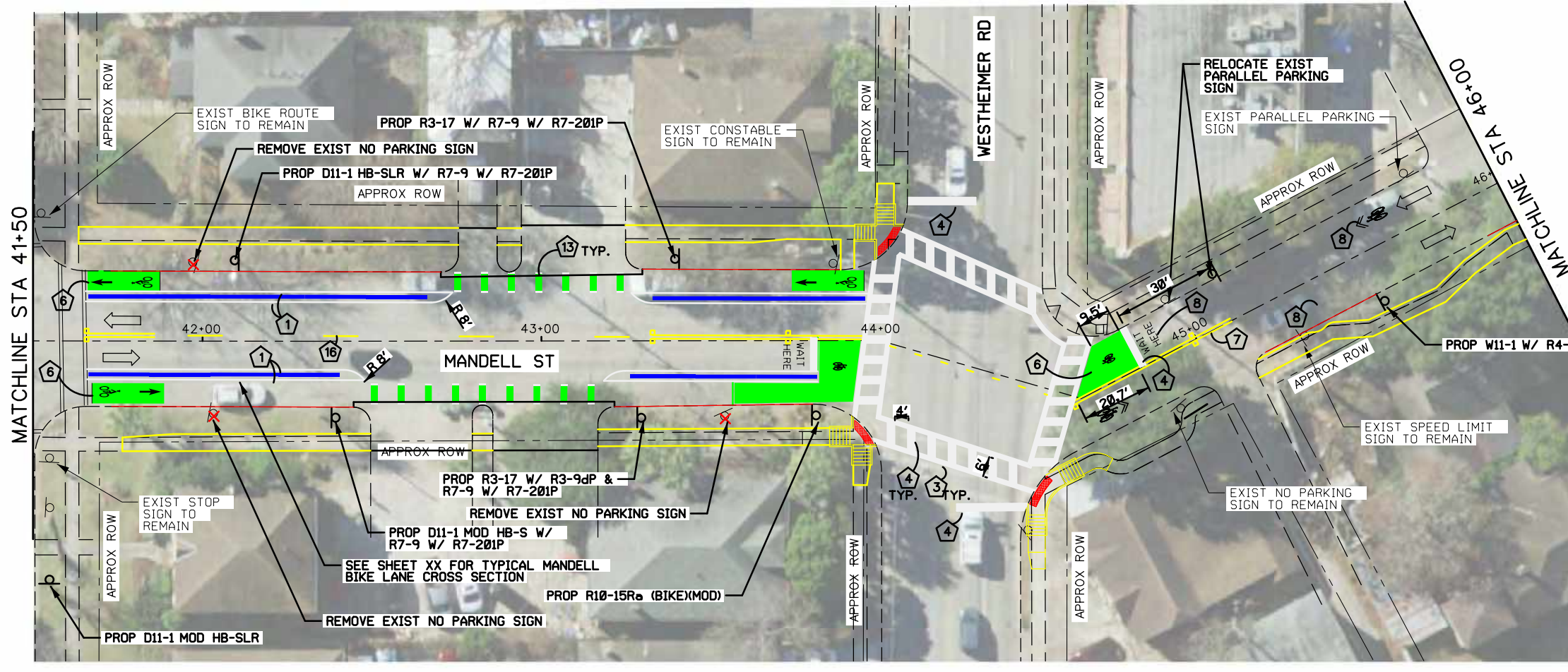
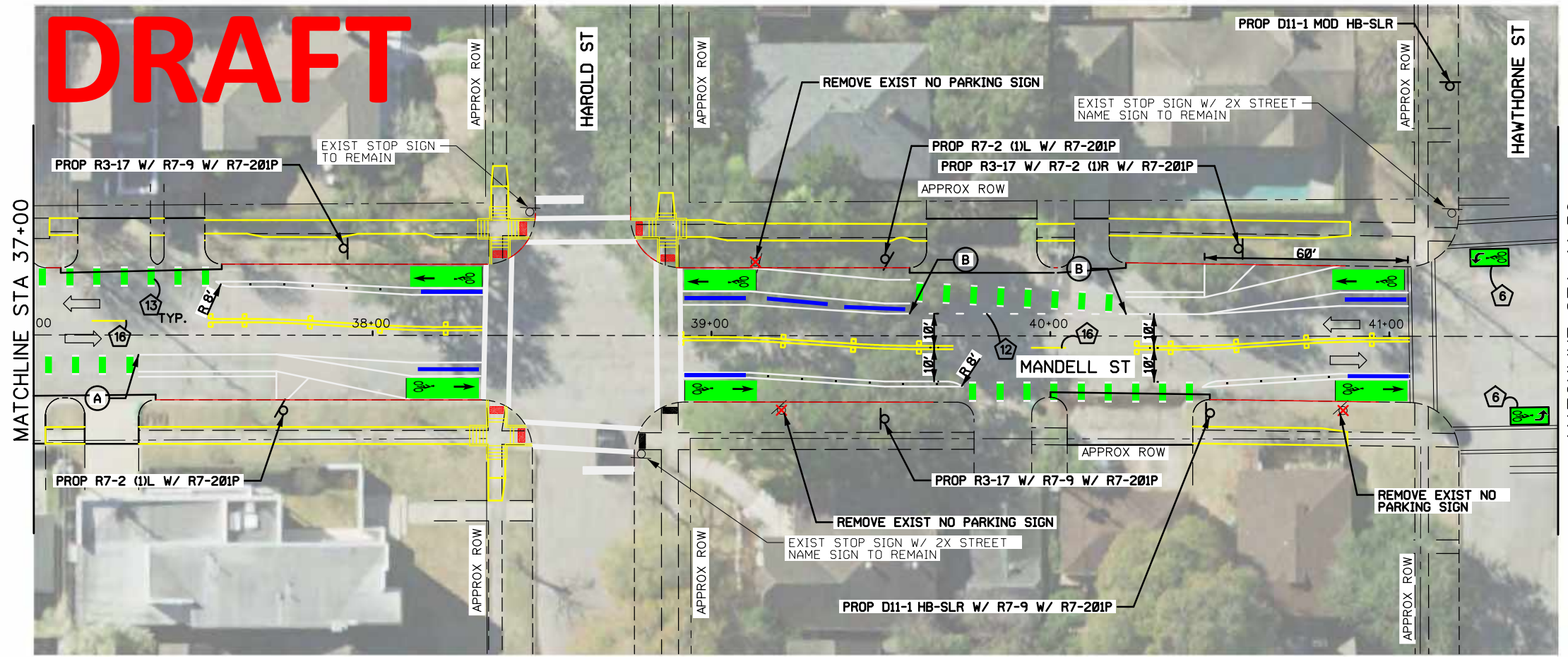
| | |
|---|--|
| TRAFFIC ENGINEERS, INC. 712 MAIN ST, Suite 950 Houston, TX 77022 www.TrafficEngineers.com Texas PE Firm Reg. #F-3158 | INTERIM REVIEW ONLY Document incomplete: not intended for permit, bidding or construction. Engineer: SARAH L. WETMORE P.E. Serial No. 130442 Firm: TRAFFIC ENGINEERS, INC. Firm No. F-3158 Date: 9/23/2022 |
|---|--|

CITY OF HOUSTON
 HOUSTON PUBLIC WORKS
**W. DALLAS STREET AND
 MANDELL STREET IMPROVEMENTS**
 SIGNING AND PAVEMENT
 MARKING LAYOUT
 STA 28+00 TO STA 37+00

| | |
|---------------------|------------------------------|
| WBS NUMBER | FOR CITY OF HOUSTON USE ONLY |
| N-T27000-002-7 | |
| DRAWING SCALE | |
| AS NOTED | |
| CITY OF HOUSTON PM | |
| SHAPOOR GOLSHAN | |
| SHEET NO. 67 OF 162 | |

Pen Table: TEL_Color.tbl
 File Name: E:\Dropbox (Traffic Engineers)\Clients\Gauge Engineering\TIRZ 27 Montrose\Design\Projects\Dallas-Mandell\05_Design\02_Plansheets\SPM - Mandell ST - 05.dgn
 9/23/2022 9:42:25 AM _USER_

DRAFT



| LEGEND | |
|--------------------------------|---|
| 1 | REFL PAV MRK (W) 4" (SLD) |
| 2 | REFL PAV MRK (W) 6" (SLD) |
| 3 | REFL PAV MRK (W) 12" (SLD) |
| 4 | REFL PAV MRK (W) 24" (SLD) |
| 5 | REFL PAV MRK (Y) 4" (SLD) |
| 6 | REFL PAV MRK TY C PREFORM SYMBOL (WHITE/GREEN) |
| 7 | DBL REFL PAV MRK (Y) 4" (SLD) WITH REFL RAISED PAV MRK (TY A) @ 40' SPACING |
| 8 | REFL PAV MRK WORD OR SYMBOL (W) |
| 9 | 9" YIELD TRIANGLE |
| 10 | PRECAST CONCRETE CURB WITH FLEX POST |
| 11 | DBL REFL PAV MRK (Y) 4" (SLD) WITH REFL RAISED PAV MRK (TY A) @ 20' SPACING |
| 12 | REFL PAV MRK (W) 4" (2' SLD, 6' GAP) |
| 13 | BIKE CONFLICT MARKING |
| 14 | REFL PAV MRK (W) 4" (SLD) WITH REFL RAISED PAV MRK (TY A) @ 20' SPACING |
| 15 | REFL PAV MRK (Y) 4" (SLD) & (Y) 4" (10' SLD, 30' GAP) WITH REFL RAISED PAV MRK (TY A) @ 40' SPACING |
| 16 | REFL PAV MRK (Y) 4" (10' SLD, 30' GAP) |
| 17 | REFL PAV MRK (W) 4" (10' SLD, 30' GAP) WITH REFL RAISED PAV MRK (TY R) @ 40' SPACING |
| — PRECAST CURB (TY A, B, OR C) | |
| • FLEX POST | |

- NOTES
- SEE SIGNAL DESIGN SHEETS FOR 'RIGHT TURN ON RED' SIGNAGE PLACEMENT.
 - SEE SHEET 76 FOR DETAIL OF BIKE LANE AT SIGNAL.
 - SEE SHEET 76 FOR DETAIL OF BIKE LANE WITH PARKING.
 - EXISTING CROSSWALKS AND STOP BARS AT HAWTHORNE STREET TO BE MAINTAINED.

| LOCATION LEGEND | |
|-----------------|---------------------------------|
| (A) | MATCH DRIVEWAY EDGE |
| (B) | MATCH CURB RETURN |
| (C) | 15' FROM DRIVEWAY EDGE |
| (D) | 30' FROM INTERSECTING CURB EDGE |



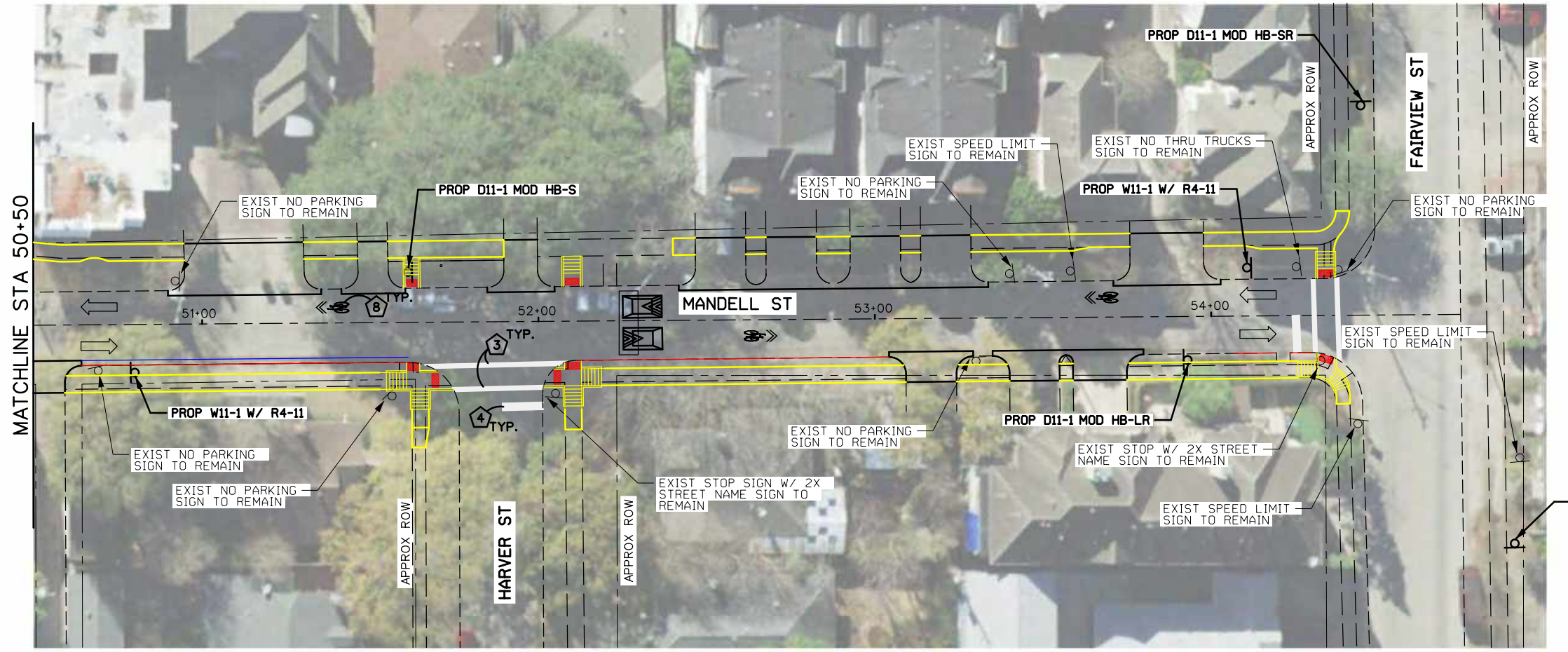
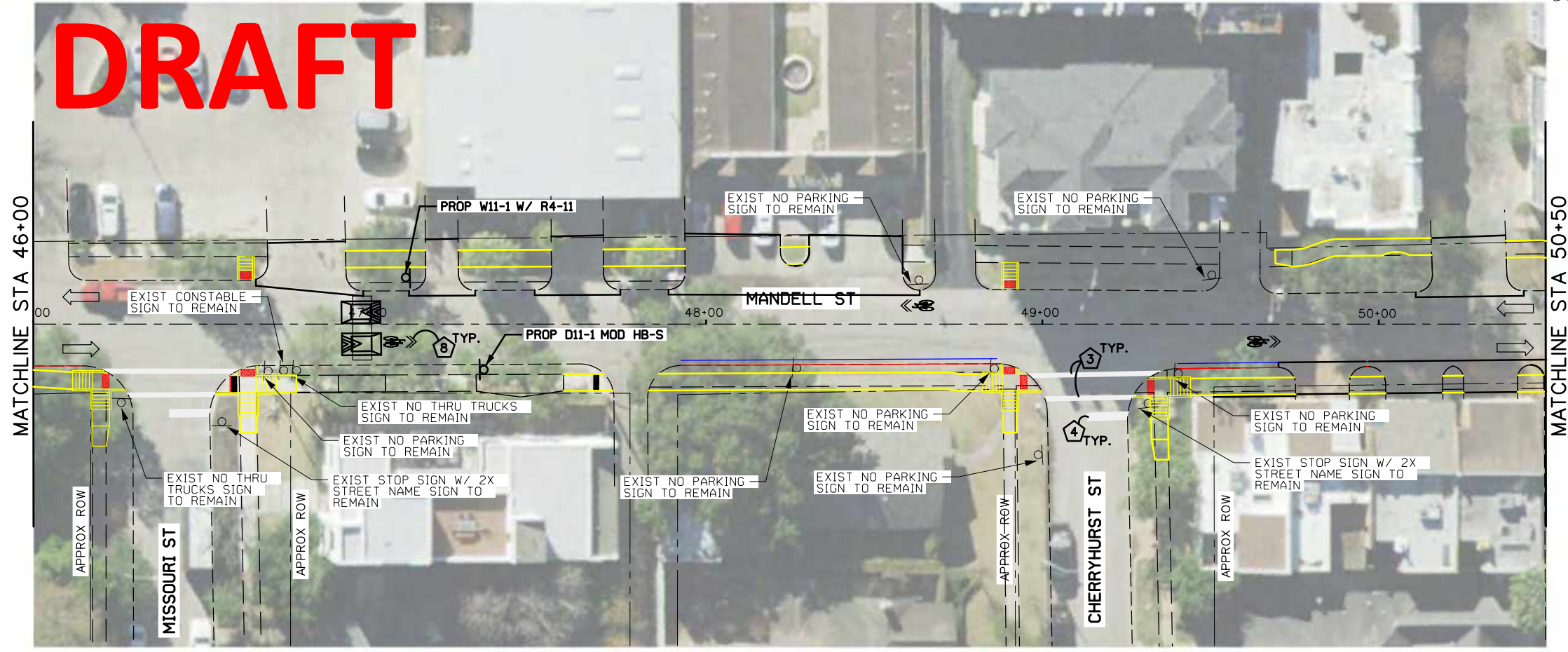
| | |
|---|---|
| TRAFFIC ENGINEERS, INC. 712 MAIN ST, Suite 950 Houston, TX 77022 www.TrafficEngineers.com Texas PE Firm Reg. #F-3158 | INTERIM REVIEW ONLY Document incomplete: not intended for permit, bidding or construction. |
| | Engineer: SARAH L. WETMORE P.E. Serial No. 130442 |
| | Firm: TRAFFIC ENGINEERS, INC. Firm No. F-3158 |
| | SURVEYED BY: Date: 9/23/2022 |

CITY OF HOUSTON
 HOUSTON PUBLIC WORKS
**W. DALLAS STREET AND
 MANDELL STREET IMPROVEMENTS**
**SIGNING AND PAVEMENT
 MARKING LAYOUT**
STA 37+00 TO STA 46+00
 SHEET 5 OF 6

| | |
|---------------------|------------------------------|
| WBS NUMBER | FOR CITY OF HOUSTON USE ONLY |
| N-T27000-002-7 | |
| DRAWING SCALE | |
| AS NOTED | |
| CITY OF HOUSTON PM | |
| SHAPOOR GOLSHAN | |
| SHEET NO. 68 OF 162 | |

Pen Table: TEL_Color.tbl
 File Name: E:\Dropbox (Traffic Engineers)\Clients\Gauge Engineering\TIRZ 27 Montrose\Design\Projects\Dallas-Mandell\05. Design\02. Plansheets\SPM - Mandell ST - 06.dgn
 9/23/2022 9:42:29 AM _USER_

DRAFT



| LEGEND | |
|---|---|
| 1 | REFL PAV MRK (W) 4" (SLD) |
| 2 | REFL PAV MRK (W) 6" (SLD) |
| 3 | REFL PAV MRK (W) 12" (SLD) |
| 4 | REFL PAV MRK (W) 24" (SLD) |
| 5 | REFL PAV MRK (Y) 4" (SLD) |
| 6 | REFL PAV MRK TY C PREFORM SYMBOL (WHITE/GREEN) |
| 7 | DBL REFL PAV MRK (Y) 4" (SLD) WITH REFL RAISED PAV MRK (TY A) @ 40' SPACING |
| 8 | REFL PAV MRK WORD OR SYMBOL (W) |
| 9 | 9" YIELD TRIANGLE |
| 10 | PRECAST CONCRETE CURB WITH FLEX POST |
| 11 | DBL REFL PAV MRK (Y) 4" (SLD) WITH REFL RAISED PAV MRK (TY A) @ 20' SPACING |
| 12 | REFL PAV MRK (W) 4" (2' SLD, 6' GAP) |
| 13 | BIKE CONFLICT MARKING |
| 14 | REFL PAV MRK (W) 4" (SLD) WITH REFL RAISED PAV MRK (TY A) @ 20' SPACING |
| 15 | REFL PAV MRK (Y) 4" (SLD) & (Y) 4" (10' SLD, 30' GAP) WITH REFL RAISED PAV MRK (TY A) @ 40' SPACING |
| 16 | REFL PAV MRK (Y) 4" (10' SLD, 30' GAP) |
| 17 | REFL PAV MRK (W) 4" (10' SLD, 30' GAP) WITH REFL RAISED PAV MRK (TY R) @ 40' SPACING |
| ■ PRECAST CURB (TY A, B, OR C) ■ FLEX POST | |

NOTES
 1. SEE SHEET 55 FOR SPEED CUSHION STRIPING DETAIL.



TRAFFIC ENGINEERS, INC.
 712 MAIN ST, Suite 950
 Houston, TX 77022
 www.TrafficEngineers.com
 Texas PE Firm Reg. #F-3158

INTERIM REVIEW ONLY
 Document incomplete: not intended for permit, bidding or construction.

Engineer: SARAH L. WETMORE
 P.E. Serial No. 130442
 Firm: TRAFFIC ENGINEERS, INC.
 Firm No. F-3158
 Date: 9/23/2022

CITY OF HOUSTON
 HOUSTON PUBLIC WORKS

**W. DALLAS STREET AND
 MANDELL STREET IMPROVEMENTS**

**SIGNING AND PAVEMENT
 MARKING LAYOUT**

STA 46+00 TO END PROJECT

SHEET 6 OF 6

| | |
|---------------------|------------------------------|
| WBS NUMBER | FOR CITY OF HOUSTON USE ONLY |
| N-T27000-002-7 | |
| DRAWING SCALE | |
| AS NOTED | |
| CITY OF HOUSTON PM | |
| SHAPOOR GOLSHAN | |
| SHEET NO. 69 OF 162 | |