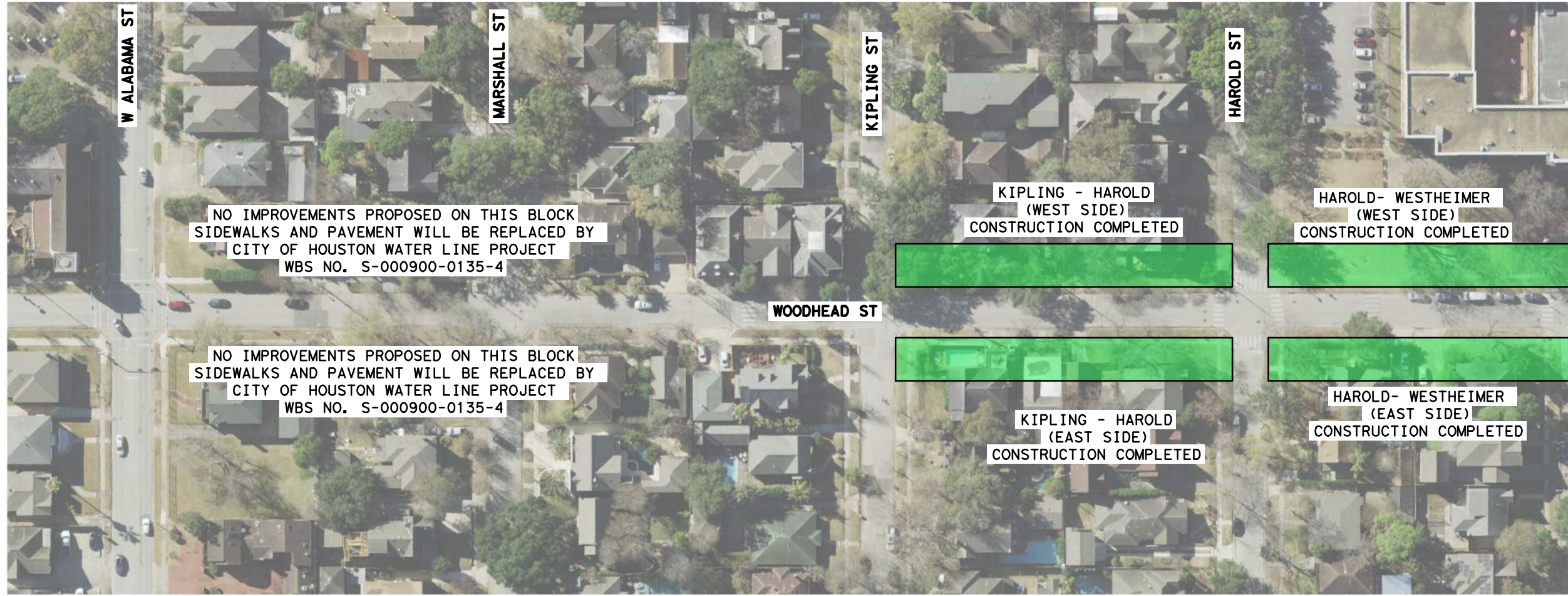


**Gauge**  
 ENGINEERING  
 11750 KATY FREEWAY, Suite 400  
 Houston, TX 77079  
 www.GaugeEngineering.com  
 Texas PE Firm Reg. #F-20017

SURVEYED BY:

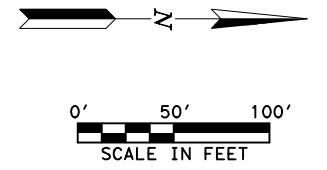
**CITY OF HOUSTON**  
 HOUSTON PUBLIC WORKS  
**HAWTHORNE ST. & WOODHEAD ST.**  
 NEIGHBORHOOD SAFE STREET  
 IMPROVEMENTS  
 WOODHEAD STREET  
 CONSTRUCTION SCHEDULE

SHEET 1 OF 4	
WBS NUMBER	FOR CITY OF HOUSTON USE ONLY
N-T27000-002-7	
DRAWING SCALE	
AS NOTED	
CITY OF HOUSTON PM	
SHAPOOR GOLSHAN	
SHEET NO. OF 247	



**LEGEND**

- SIDEWALK INSTALLATION COMPLETED
- SIDEWALK INSTALLATION IN PROGRESS
- SIDEWALK FUTURE PLAN
- MILL & OVERLAY COMPLETED



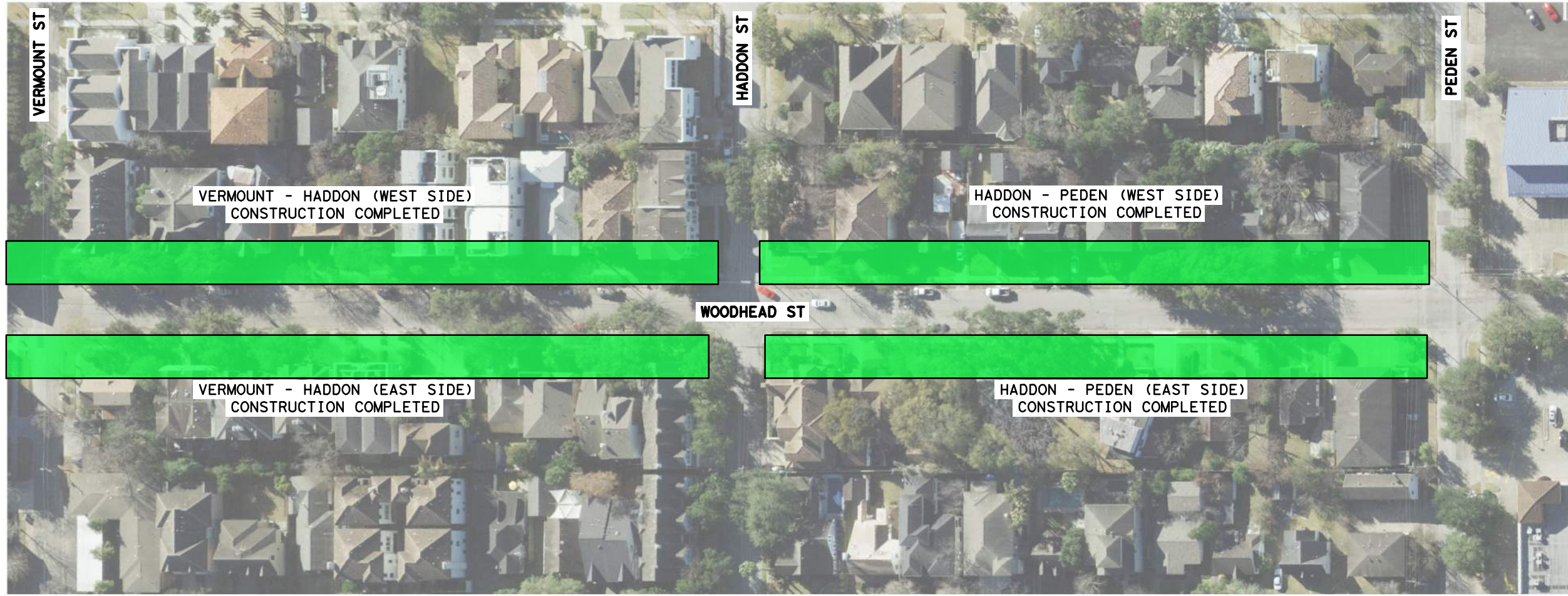
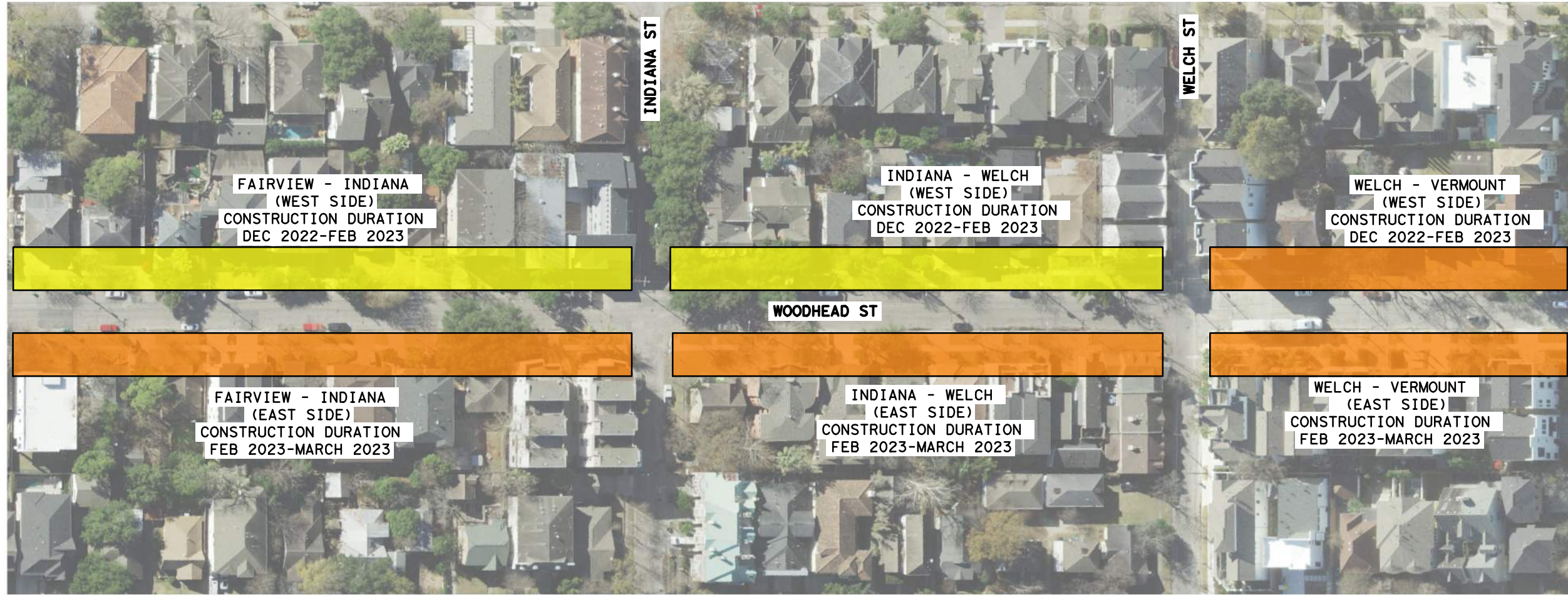
**Gauge**  
 ENGINEERING  
 11750 KATY FREEWAY, Suite 400  
 Houston, TX 77079  
 www.GaugeEngineering.com  
 Texas PE Firm Reg. #F-20017

SURVEYED BY:

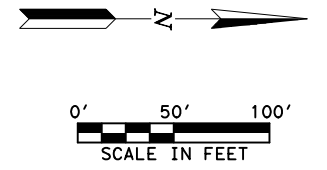
**CITY OF HOUSTON**  
 HOUSTON PUBLIC WORKS

**HAWTHORNE ST. & WOODHEAD ST. NEIGHBORHOOD SAFE STREET IMPROVEMENTS**  
 WOODHEAD STREET CONSTRUCTION SCHEDULE

SHEET 2 OF 4	
WBS NUMBER	FOR CITY OF HOUSTON USE ONLY
N-T27000-002-7	
DRAWING SCALE	
AS NOTED	
CITY OF HOUSTON PM	
SHAPOOR GOLSHAN	
SHEET NO.	OF 247



- LEGEND**
- SIDEWALK INSTALLATION COMPLETED
  - SIDEWALK INSTALLATION IN PROGRESS
  - SIDEWALK FUTURE PLAN
  - MILL & OVERLAY COMPLETED



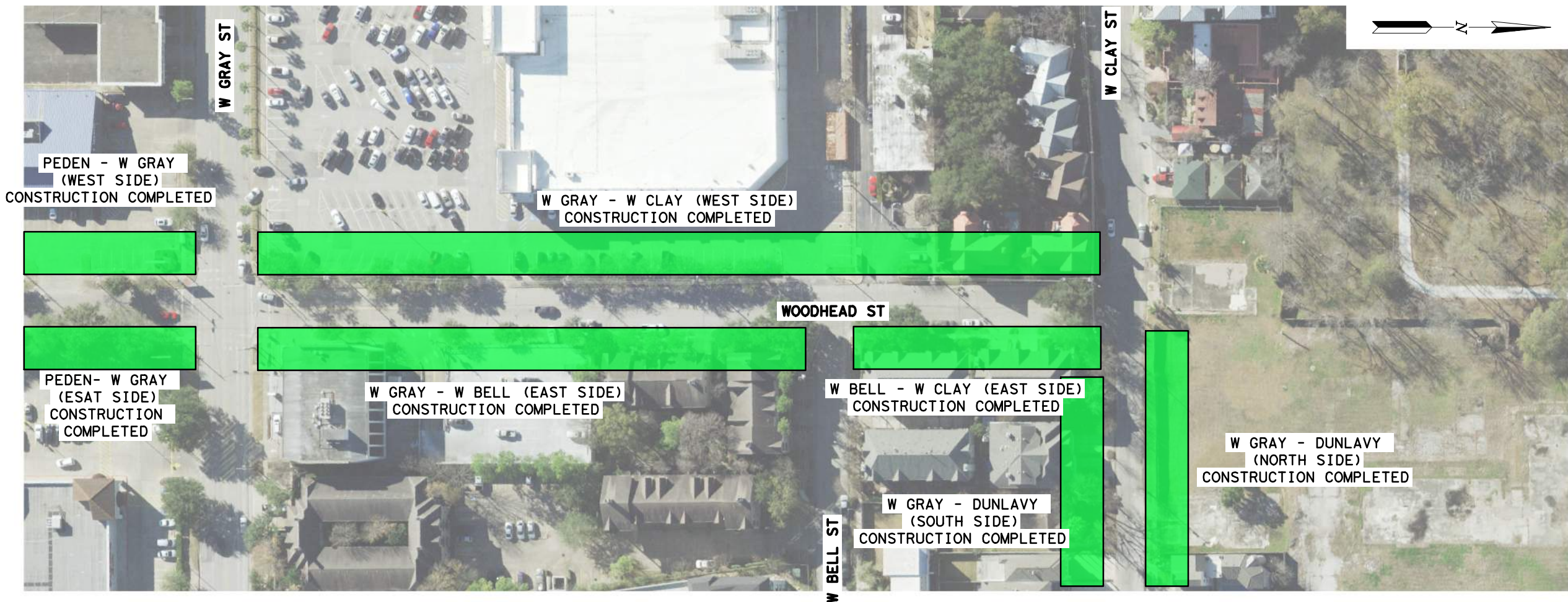
**Gauge**  
 ENGINEERING  
 11750 KATY FREEWAY, Suite 400  
 Houston, TX 77079  
 www.GaugeEngineering.com  
 Texas PE Firm Reg. #F-20017

SURVEYED BY:

**CITY OF HOUSTON**  
 HOUSTON PUBLIC WORKS

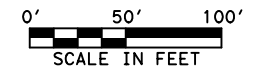
HAWTHORNE ST. & WOODHEAD ST.  
 NEIGHBORHOOD SAFE STREET  
 IMPROVEMENTS  
 WOODHEAD STREET  
 CONSTRUCTION SCHEDULE

SHEET 3 OF 4	
WBS NUMBER	FOR CITY OF HOUSTON USE ONLY
N-T27000-002-7	
DRAWING SCALE	
AS NOTED	
CITY OF HOUSTON PM	
SHAPOOR GOLSHAN	
SHEET NO.	OF 247



**LEGEND**

- SIDEWALK INSTALLATION COMPLETED
- SIDEWALK INSTALLATION IN PROGRESS
- SIDEWALK FUTURE PLAN
- MILL & OVERLAY COMPLETED



**Gauge**  
 ENGINEERING  
 11750 KATY FREEWAY, Suite 400  
 Houston, TX 77079  
 www.GaugeEngineering.com  
 Texas PE Firm Reg. #F-20017

SURVEYED BY:

**CITY OF HOUSTON**  
 HOUSTON PUBLIC WORKS  
**HAWTHORNE ST. & WOODHEAD ST.**  
 NEIGHBORHOOD SAFE STREET  
 IMPROVEMENTS  
 WOODHEAD STREET  
 CONSTRUCTION SCHEDULE

SHEET 4 OF 4	
WBS NUMBER	FOR CITY OF HOUSTON USE ONLY
N-T27000-002-7	
DRAWING SCALE	
AS NOTED	
CITY OF HOUSTON PM	
SHAPOOR GOLSHAN	
SHEET NO. OF 247	