



**MONTROSE**  
TAX INCREMENT REINVESTMENT ZONE 27

## **MONTROSE BOULEVARD IMPROVEMENTS**

From Allen Parkway to W Clay Street

August 2023



**tei** Planning + Design



# MEETING AGENDA



**01** Montrose Blvd – Segment 1

**02** Public Concerns Incorporated

**03** Next Steps



# MONTROSE BLVD – SEGMENT 1



# MONTROSE BLVD – SEGMENT 1

ALLEN PARKWAY TO W CLAY STREET



## TYPE

FULL ROADWAY RECONSTRUCTION  
0.5 miles



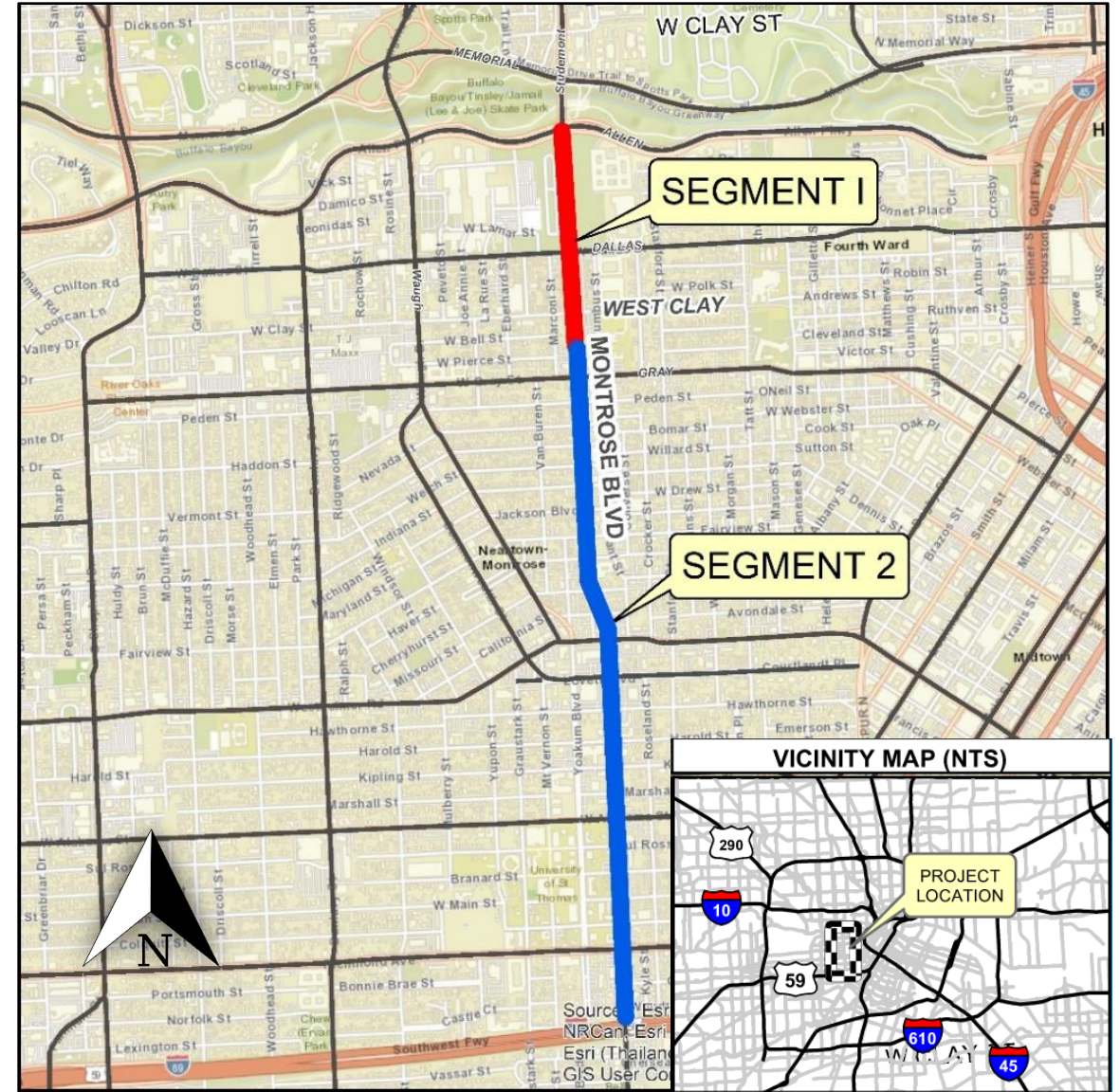
## COST ESTIMATE

\$14 Million



## PHASE

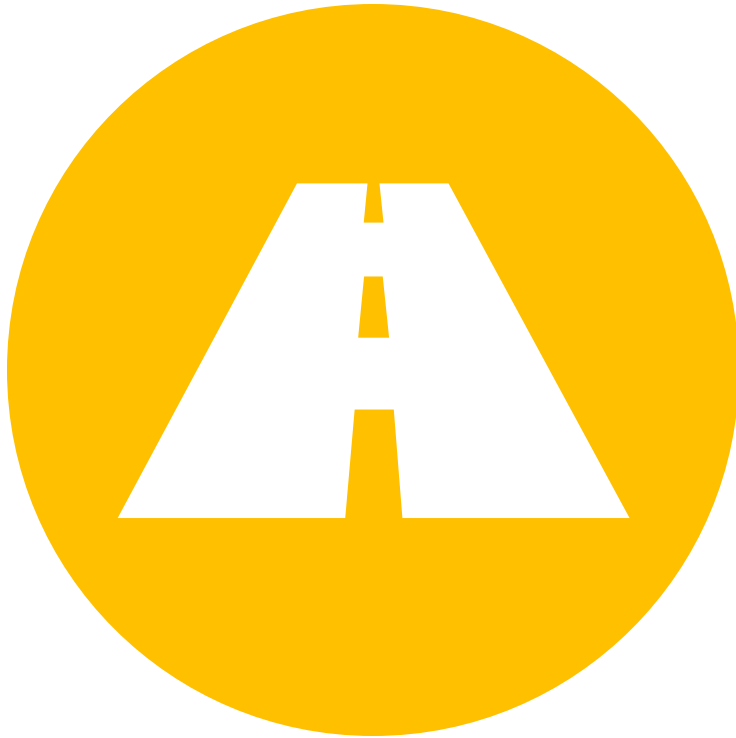
DESIGN (90% IN PROGRESS)  
*90% design to be submitted by Aug. 2023*



# PROJECT OBJECTIVES

Proposed conditions will achieve the following

---



**Improve Roadway  
Mobility & Safety for all users**



**Promote a Pedestrian &  
Bicycle Friendly Environment**



**Drainage  
Improvements**

# PROJECT SCOPE



Full Roadway Reconstruction



Improve Pedestrian Realm



Upgrade Intersection Safety



Improve Traffic Signal



Improve Storm Sewer System



Utility Replacement, as required



METRO Improvements



Street Lighting



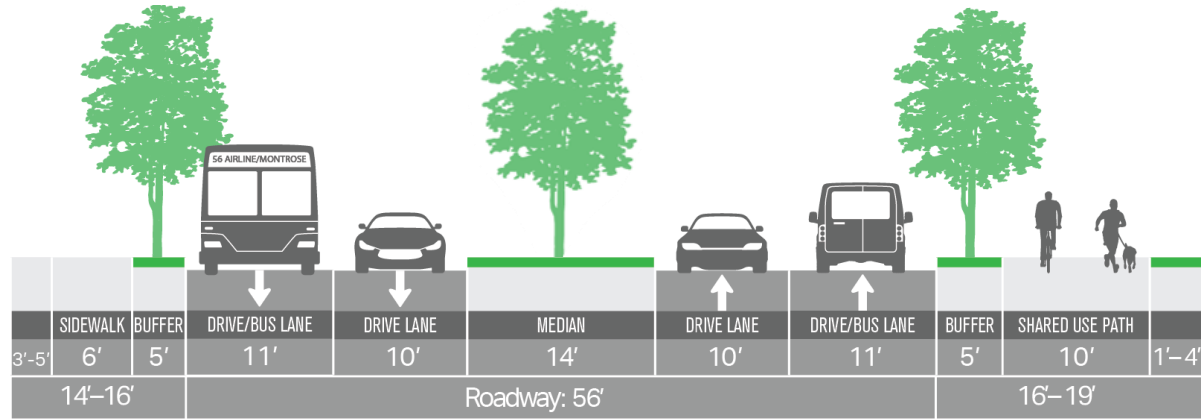
Tree Protection & Preservation



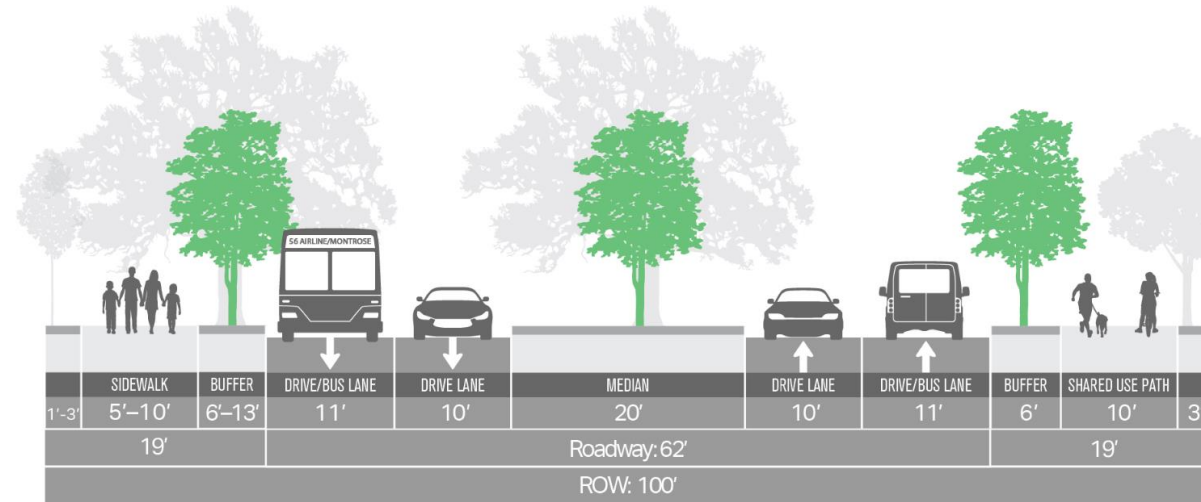
Improve Multimodal Transportation



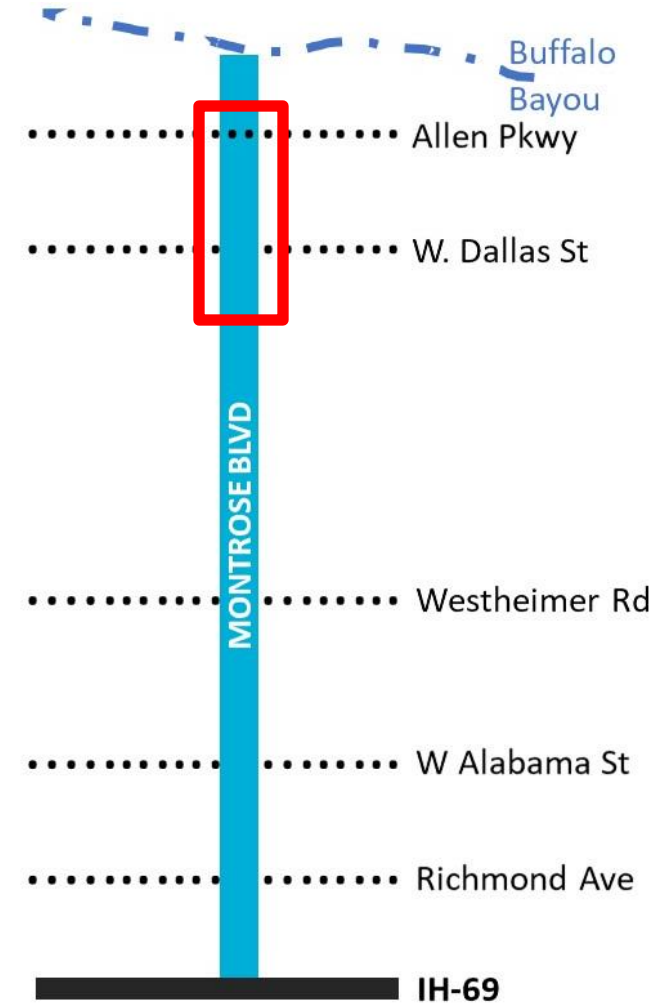
# PROPOSED TYPICAL SECTIONS



DALLAS STREET TO ALLEN PARKWAY



W CLAY STREET TO DALLAS STREET



# PROPOSED STREETScape CHARACTER

## W DALLAS STREET TO ALLEN PARKWAY

## PROTOTYPICAL STREET SECTION

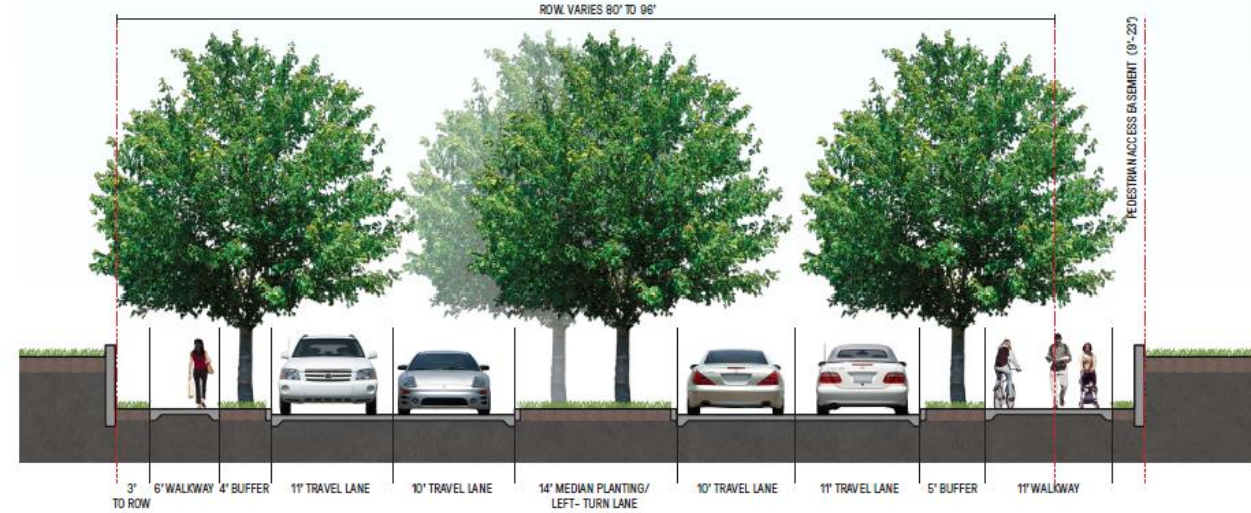
### LEGEND



NEW TREES

NOTE: PRELIMINARY DESIGN CONCEPT ONLY NOT FOR CONSTRUCTION

TREES ARE SHOWN AT APPROXIMATE SIZE FOR EXISTING AND AT TIME OF PARTIAL MATURITY FOR NEW TREES



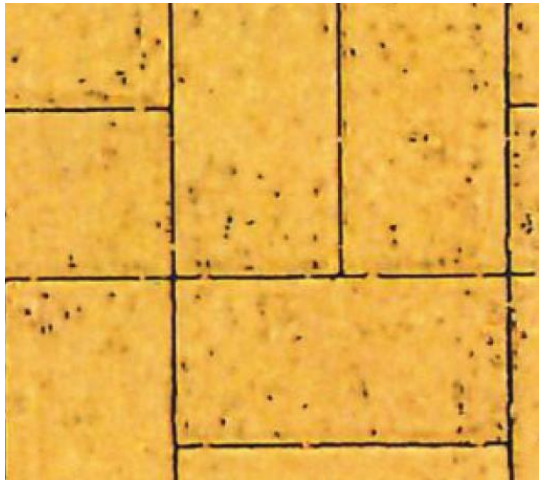
PROTOTYPICAL STREET PLAN



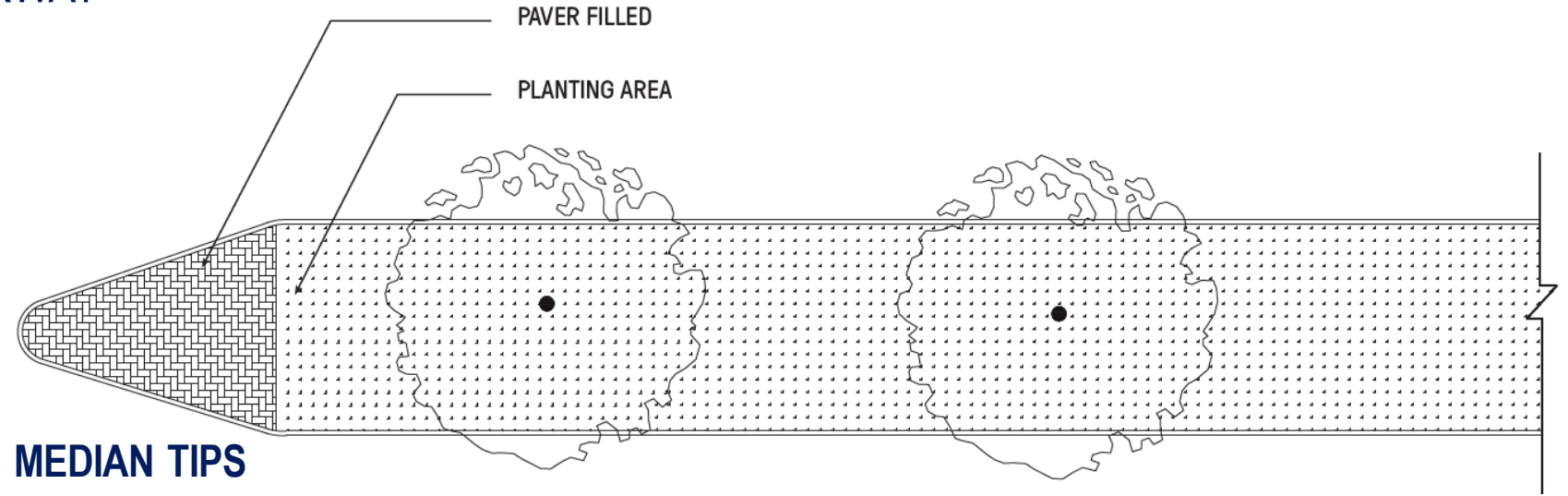


# HARDSCAPE PALETTE CONCEPT

W DALLAS STREET TO ALLEN PARKWAY

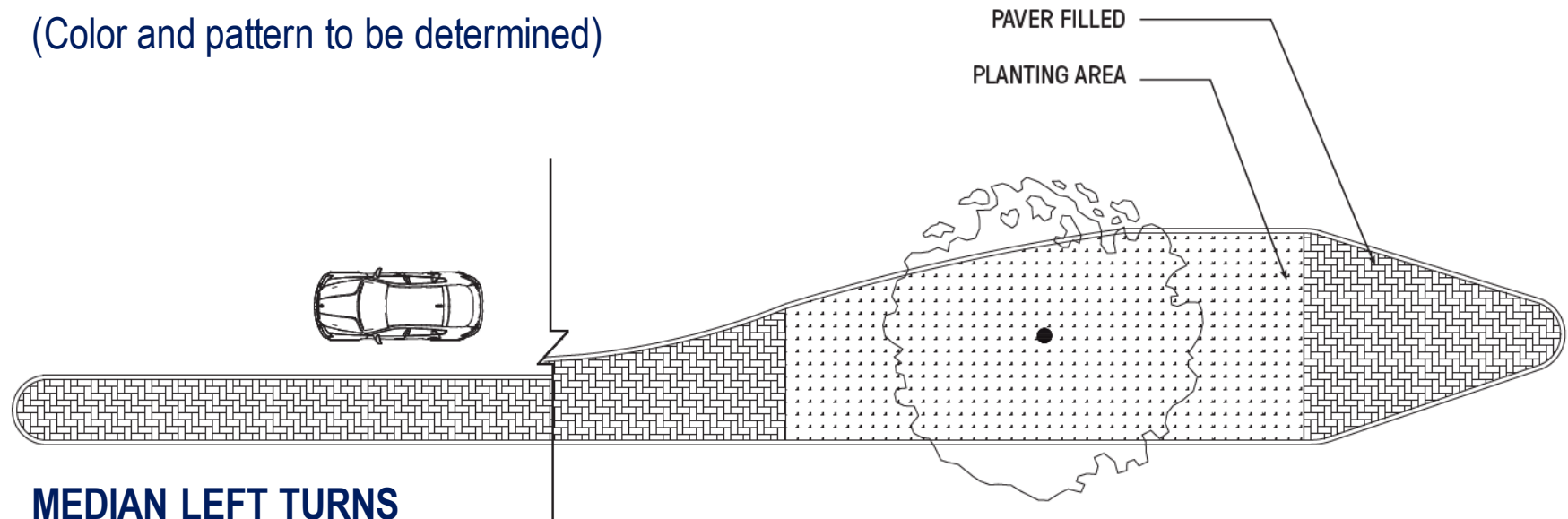


**BUFF CONCRETE UNIT PAVER  
(OPTIONAL)**



## **MEDIAN TIPS**

(Color and pattern to be determined)



## **MEDIAN LEFT TURNS**

(Color and pattern to be determined)

# DESIGN CONSIDERATIONS

## W DALLAS STREET TO ALLEN PARKWAY

### MEDIAN TREES (CYPRESS)



BALD CYPRESS IN WINTER



MONTEZUMA CYPRESS



LANANA CYPRESS

### MEDIAN ACCENT PAVING

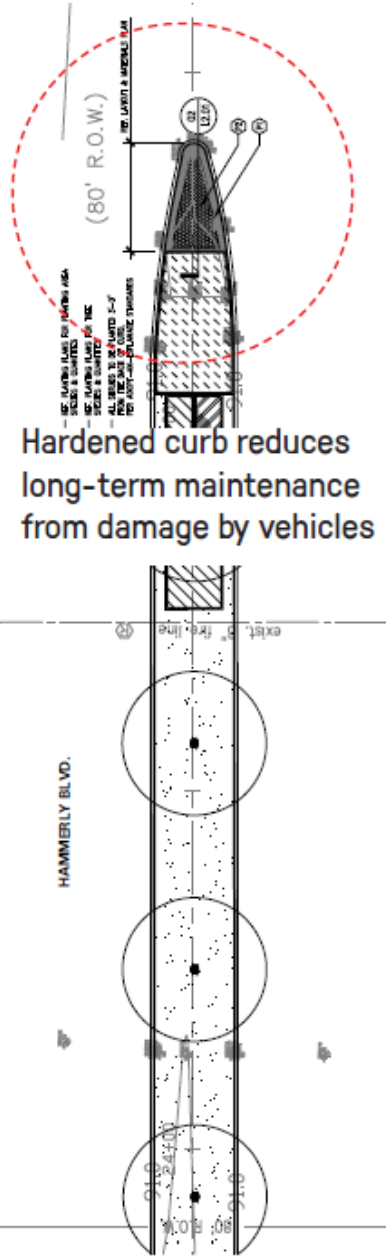


MEMORIAL DRIVE.



RIVER OAKS BLVD.

### MEDIAN CURBS

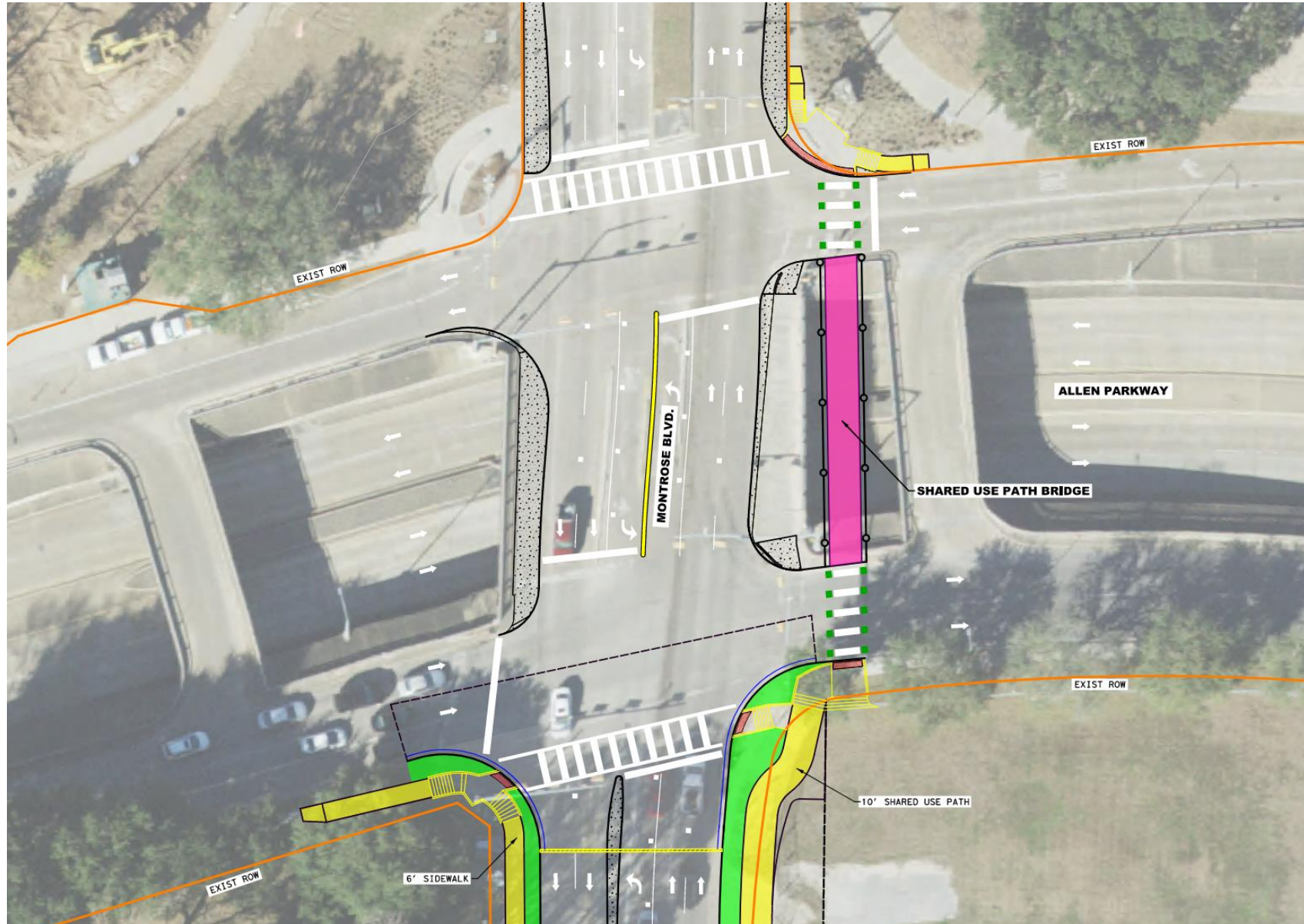


Hardened curb reduces long-term maintenance from damage by vehicles

HARDENED CURBING

# PROPOSED PEDESTRIAN AND BICYCLIST BRIDGE

OVER ALLEN PARKWAY UNDERPASS



# PROPOSED PEDESTRIAN AND BICYCLIST BRIDGE

OVER ALLEN PARKWAY UNDERPASS



# PROPOSED DRAINAGE SYSTEM

REPLACE 48" AND 54" PIPES WITH 10'X10' BOX



# PROPOSED SCHEDULE

## Segment I: West Clay St to Allen Parkway



## Segment II: US-59 to West Clay St To Be Determined



*\*Timeline subject to change based on funding*

**PREVIOUS PUBLIC  
MEETINGS COMMENTS  
INCORPORATED**



# PUBLIC COMMENTS INCORPORATED



## **Bicycle Facility:**

Incorporated as a Shared Use Path on east side.



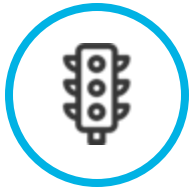
## **Shaded Pedestrian Realm:**

Many trees will be planted for shade.



## **Pedestrian Safety at Intersections:**

Leading Pedestrian Intervals for signalized intersections.



## **Rectangular Rapid Flashing Beacons (RRFB) are not effective enough:**

Signals at intersections with closed medians are being used in lieu of the RRFBs.



## **Tree Preservation:**

Many median trees will be preserved.

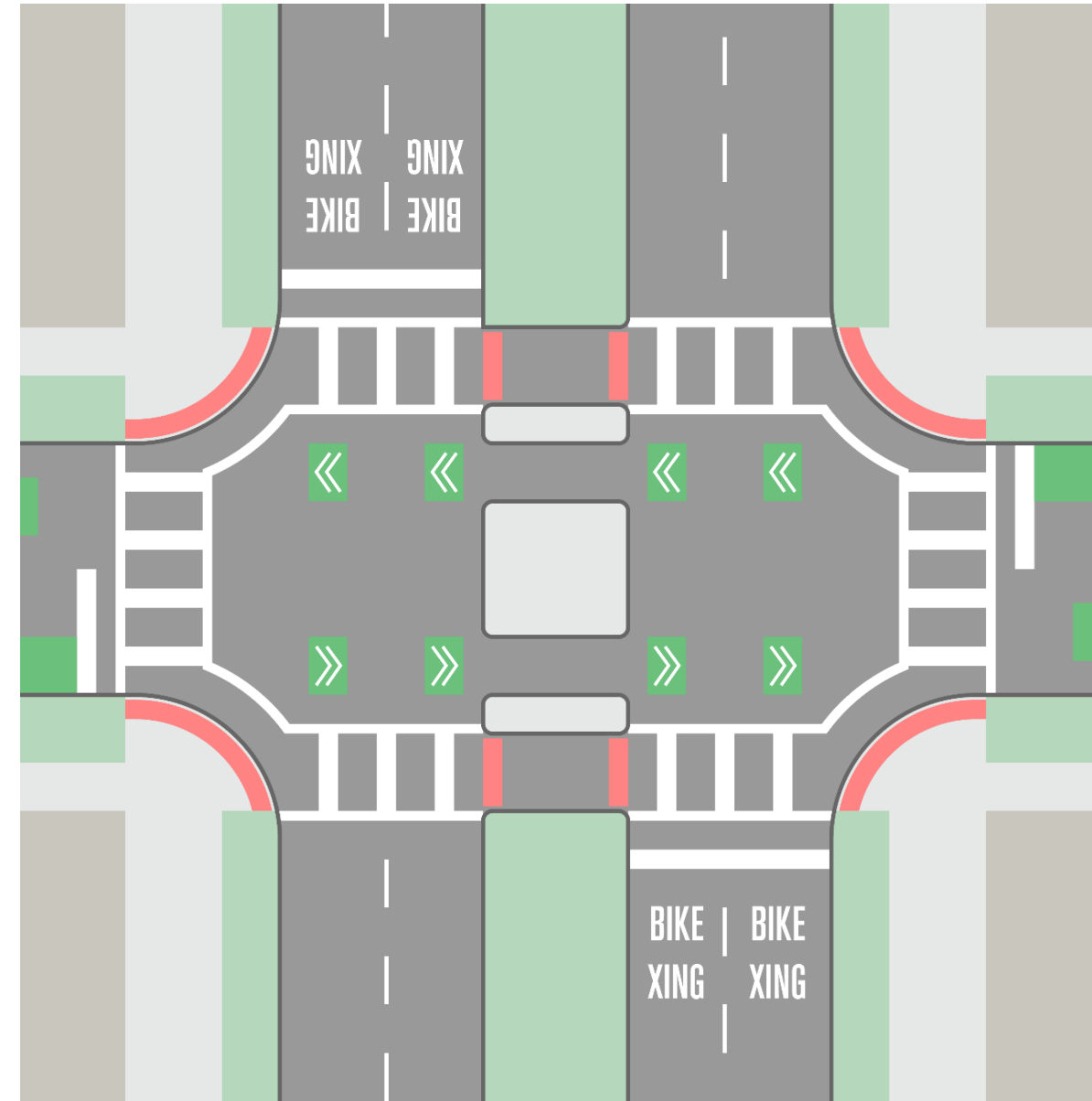


# SAFE CORRIDOR CROSSINGS – RRFB REMOVED



- **Median closure at Clay Street to accommodate safe crossings**

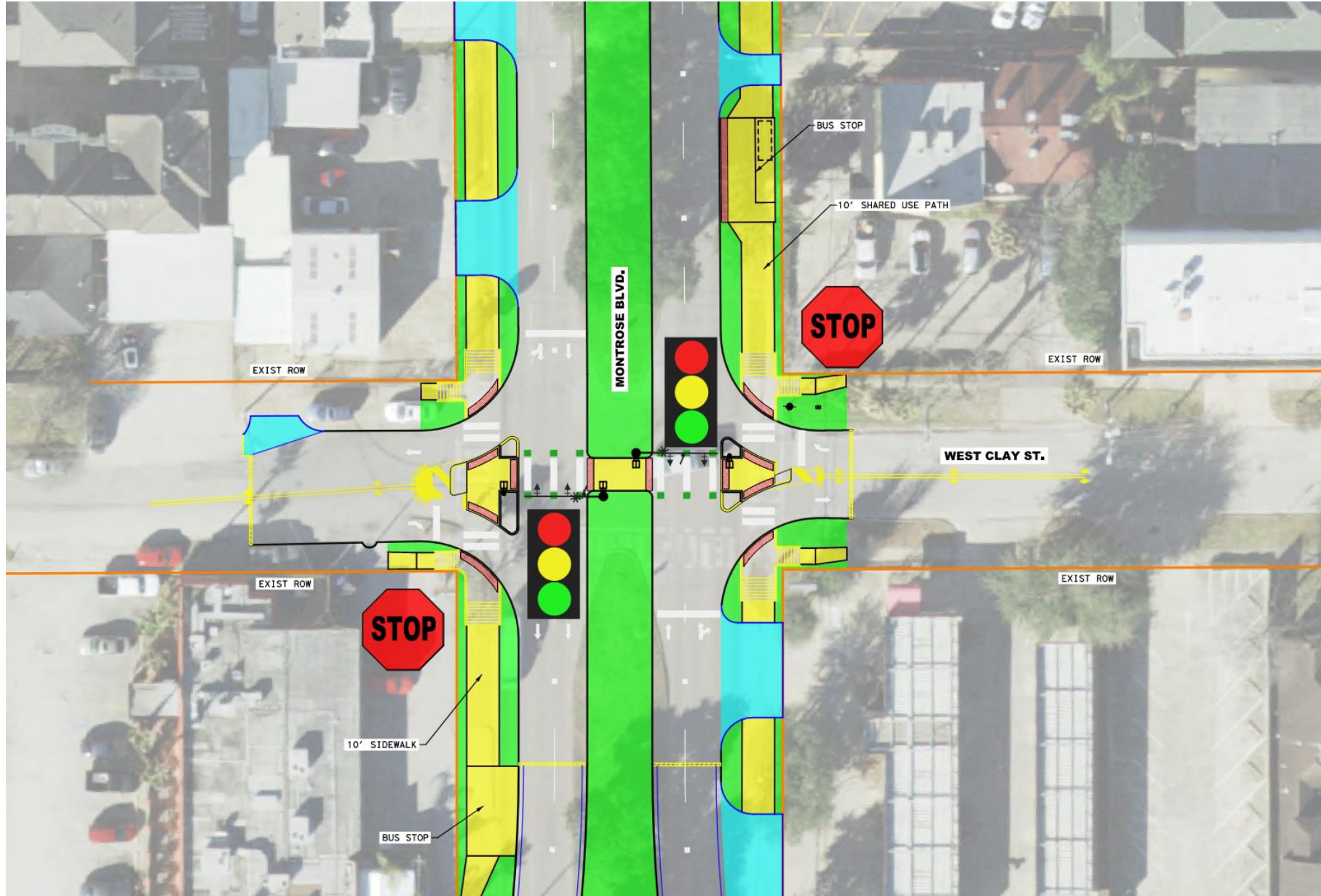
- ~~Rectangular Rapid Flashing Beacons (RRFBs) to aid crossing (Removed)~~



# PROPOSED SIGNAL REPLACES RRFB

Signal provides safe crossing for pedestrians and bicyclists

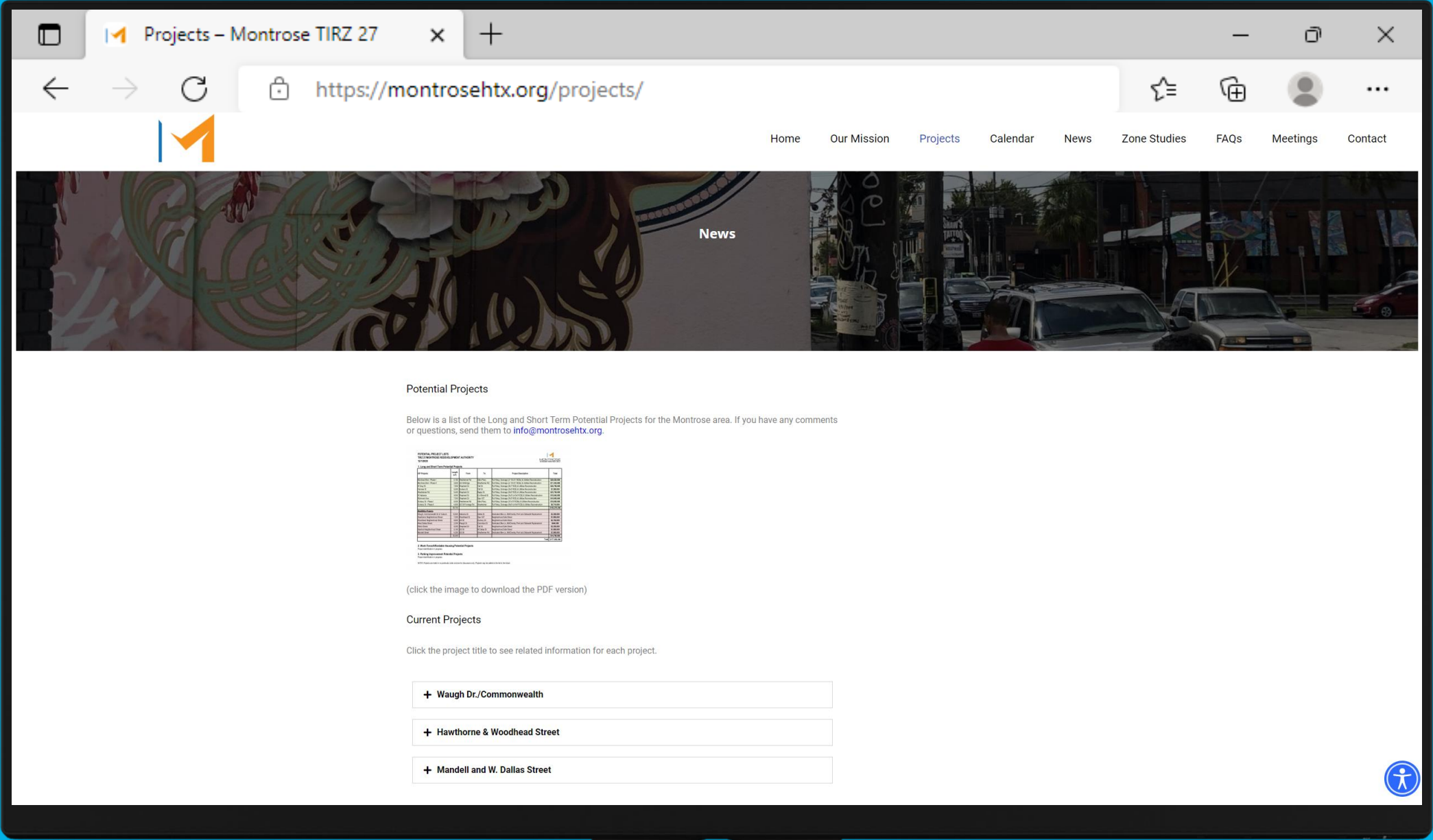
Signal turns yellow then red when crossing button is pushed



# TOUCAN SIGNAL EXAMPLES



# PROJECT PAGE ON [MONTROSEHTX.ORG/PROJECTS/](https://montrosehtx.org/projects/)



# NEXT STEPS

## IN-PERSON COMMUNITY MEETING



# Thank You!

## Contact Us

- [info@montrosehtx.org](mailto:info@montrosehtx.org)
- [montrosehtx.org](http://montrosehtx.org)

## Next Public Meeting

September 18th, 2023

6:30 pm – 7:30 pm

St. Stephens Episcopal  
School, Pecore Hall

1800 Sul Ross Street

Houston, Texas 77098

