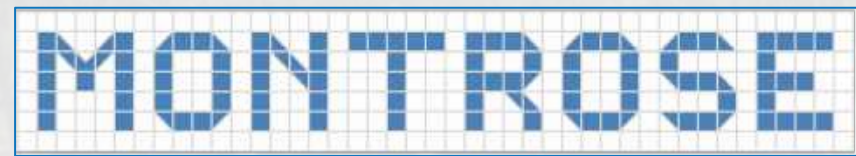




MONTROSE
TAX INCREMENT REINVESTMENT ZONE 27

Neartown Association Briefing



October 24, 2023



Agenda

- Ongoing Projects
 - W Gray – Under Construction
 - Montrose Blvd – Segment I – Under Design
 - Dallas and Mandell Streets – Under Design (Soft hold)
- Upcoming Projects
 - Montrose – Segment II
 - West Alabama
 - Stanford Welch Improvements
 - Waugh Drive Bike/Ped Extension
 - Wharton Safe Walk to Schools
 - Cherryhurst Sidewalk Improvements
- Questions/Comments





Ongoing Projects

W. Gray Street

Grant:

METRO 5310 Program

Limits:

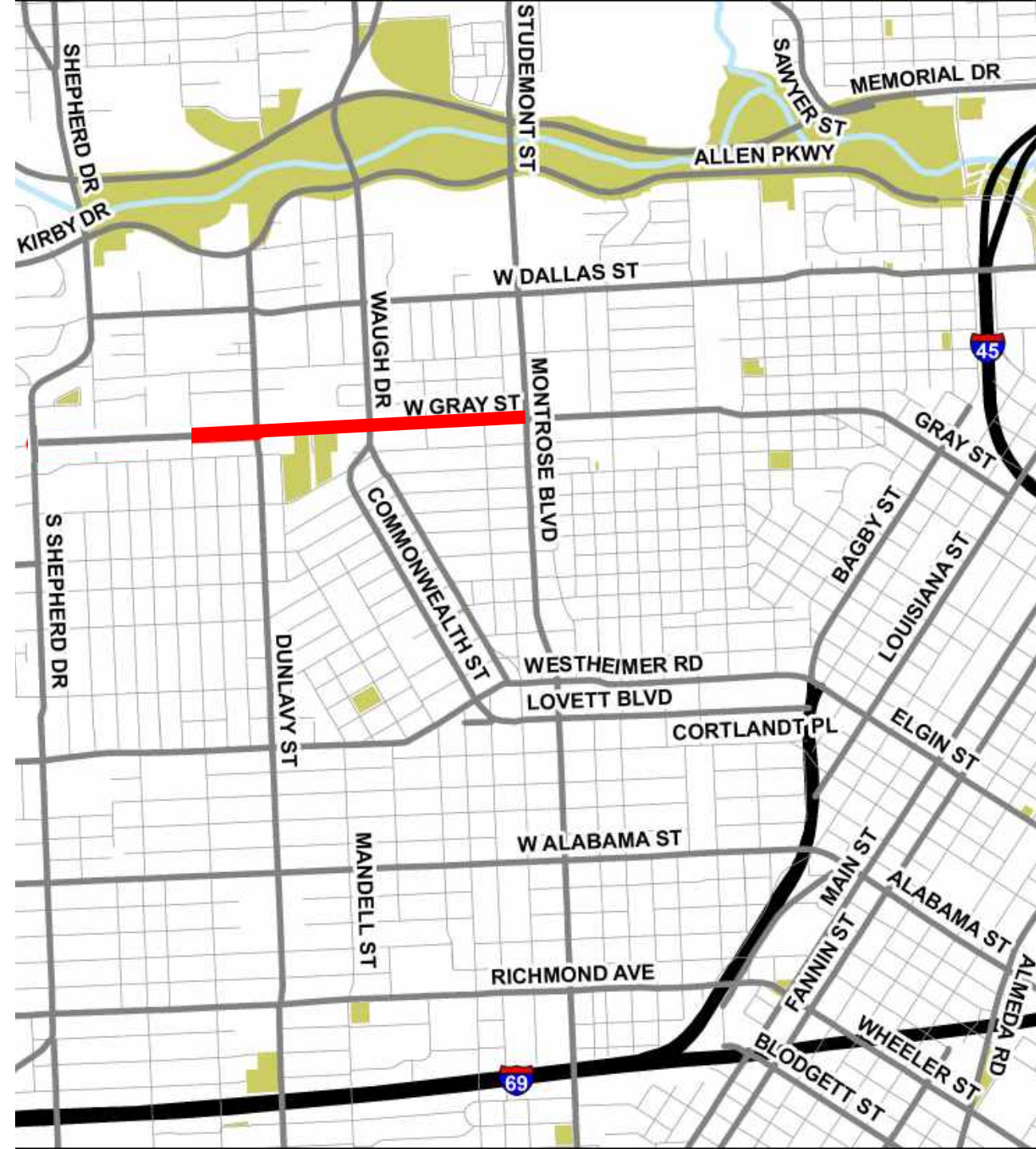
Woodhead St. to Montrose Blvd

Proposed Improvements:

- \$814 K (\$500K Federal Funds)
- Accessible sidewalks and ADA compliant corner Ramps

Current Status:

- Under Construction
- 50% Completed



W. Gray Street

Scope:

New Sidewalks

Images:

Taken October 2023



Concrete Removal



Driveway Replacement



Traffic Control



Curb Wall Form Work



Montrose Boulevard – Segment I

Purpose:

- Create a signature corridor
- Improve drainage, mobility and quality of life.

Limits and Cost:

- 0.5 miles (South of W Clay Street to Allen Pkwy)
- \$14 Million

Current Status:

- Under Design
- Construction early 2024



PROPOSED DRAINAGE SYSTEM

REPLACE 48" AND 54" PIPES WITH 10'X10' BOX



W. Dallas & Mandell Streets

Limits:

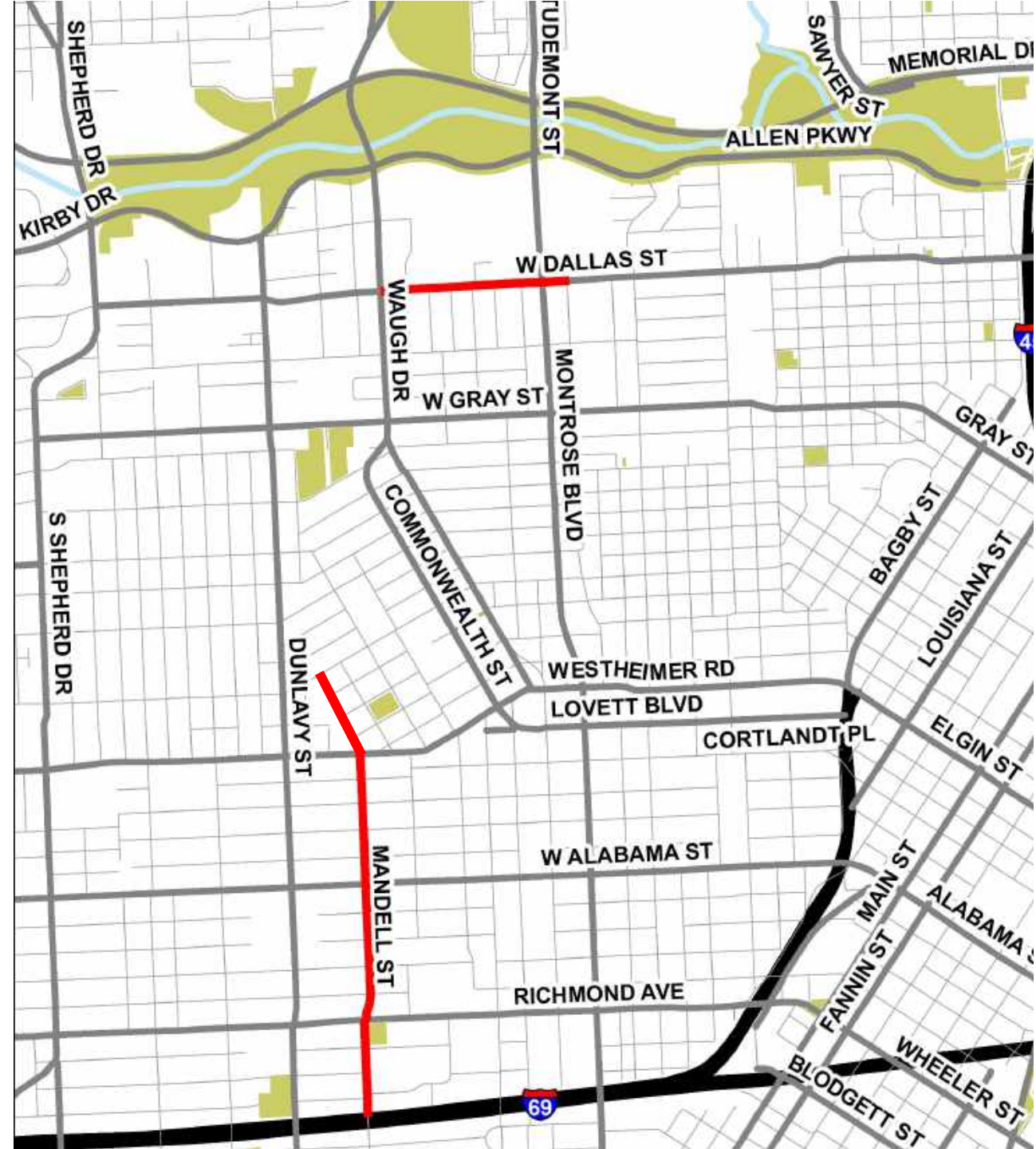
- **W. Dallas St:** Waugh Dr. to just east of Montrose Blvd (2,200 LF)
- **Mandell St:** US 69 to Fairview (4,120 LF)

Proposed Improvements:

- > \$2.2 Million
- Mill and overlay of existing deteriorated asphalt pavement
- Intersection safety improvements
- Accessible sidewalks and ADA compliant corner ramps
- Dedicated Bikeway Facilities
- Signal modifications, Signing & Restriping
- City is doing rehab work

Current Status:

- 90% Completed
- Delayed due to City WL project along Fairview





Upcoming Projects

Montrose Boulevard – Segment II

Purpose:

- Create a signature corridor
- Improve drainage, mobility and quality of life.

Limits and Cost:

- 1.5 miles (South of W Clay Street to US 59)
- \$43 Million

Current Status:

- Seeking federal funds
- Optimizing typical section



W Alabama Street

Purpose:

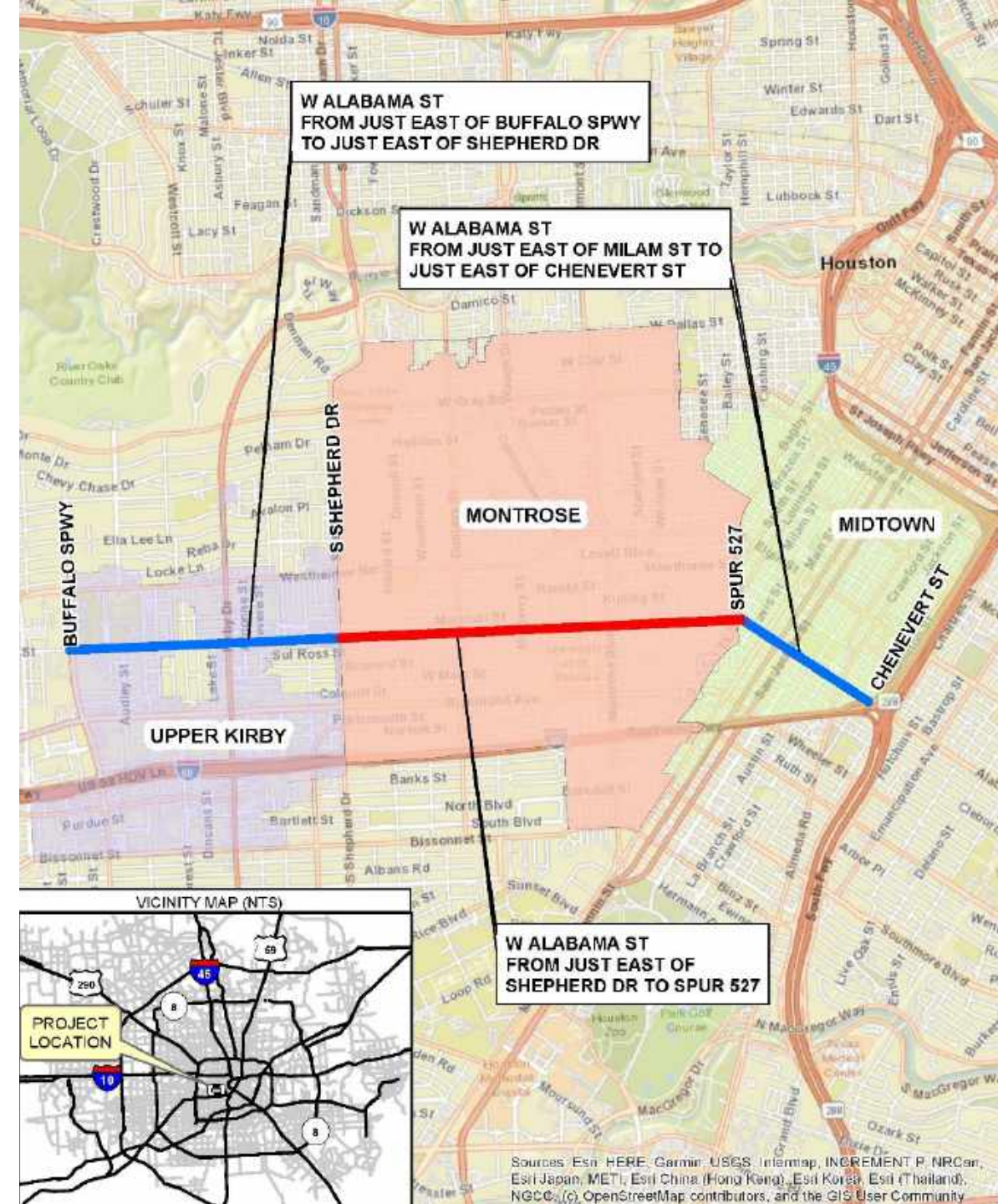
- Improve mobility (High-comfort Bike)
- Drainage
- Quality of life

Limits and Cost:

- 1.7 miles (Shephard Dr to Spur 527)
- > \$25 Million

Current Status:

- Preliminary Engineering - Completed
- Pursue federal grants in a joint efforts with neighboring TIRZs



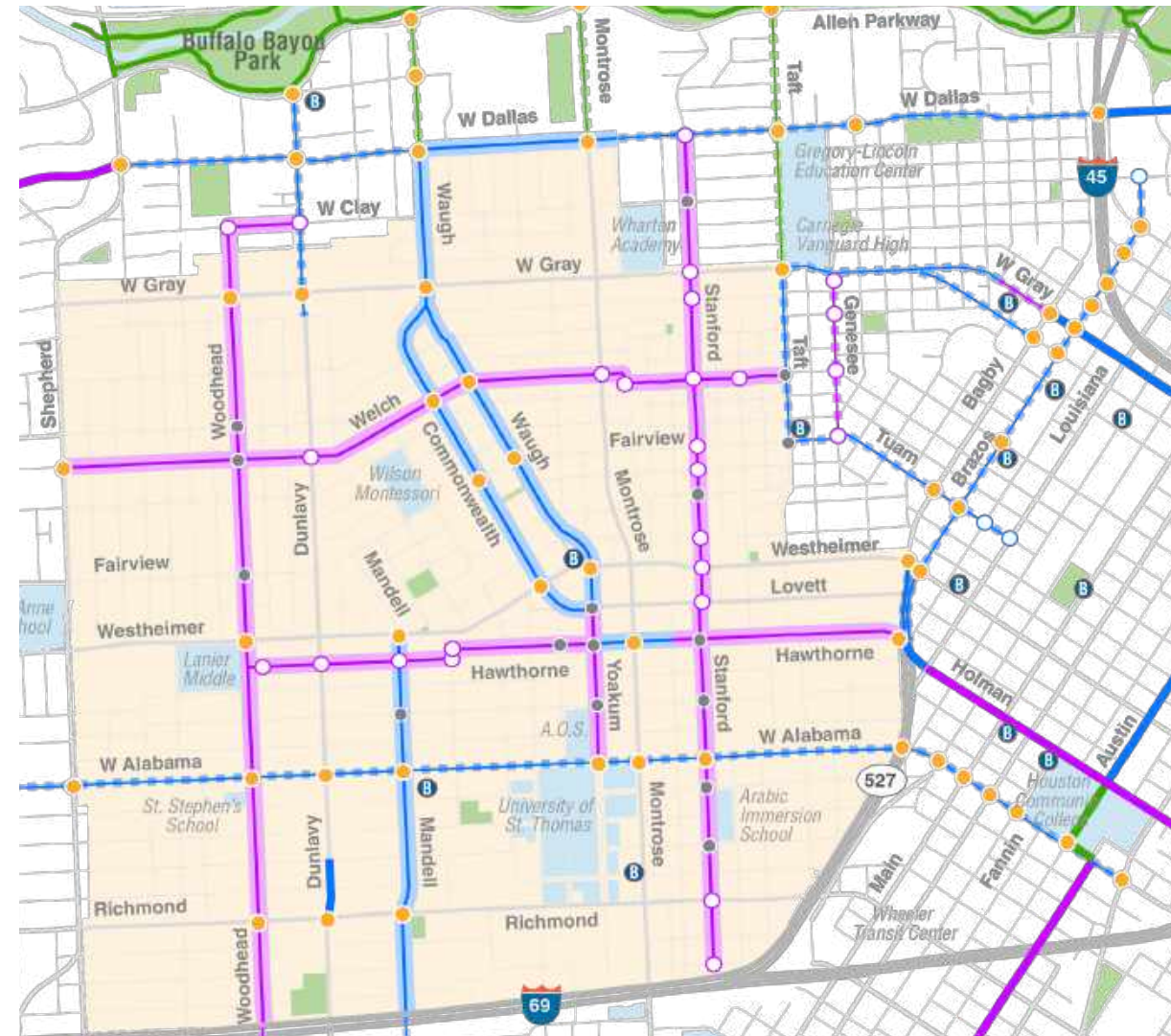
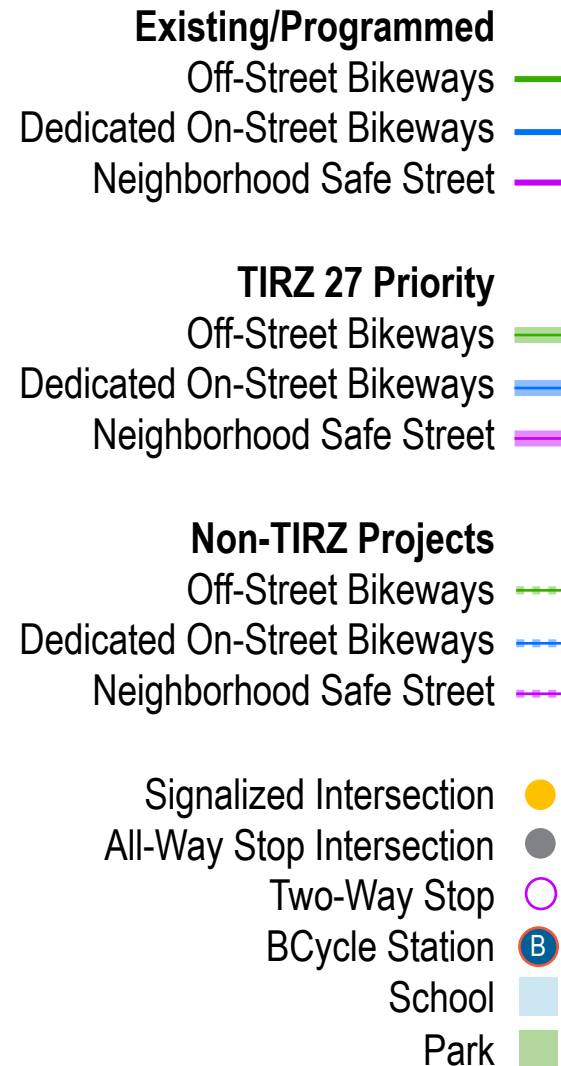
Stanford and Welch Safe Neighborhood Street

Purpose:

- Convert to a Neighborhood Safe Street

Current Status:

- Seeking funding



Waugh Drive Extension

Purpose:

- Extend the recently completed Waugh Drive Typical section to Allen Parkway
- Improve sidewalks
- Provide a dedicated bike lane that is for All Ages and Abilities

Limits and Cost:

- W Dallas St to Allen Pkwy
- \$1.3 Million

Current Status:

- Seeking funding support



Wharton Safe Walk to Schools

Purpose:

- Safe ADA compliant Sidewalks
- Safe Crossings

Limits and Cost:

- 16,000 FT of new sidewalks
- > \$7 Million

Current Status:

- Seeking funding support



Cherryhurst Sidewalk Improvements

Purpose:

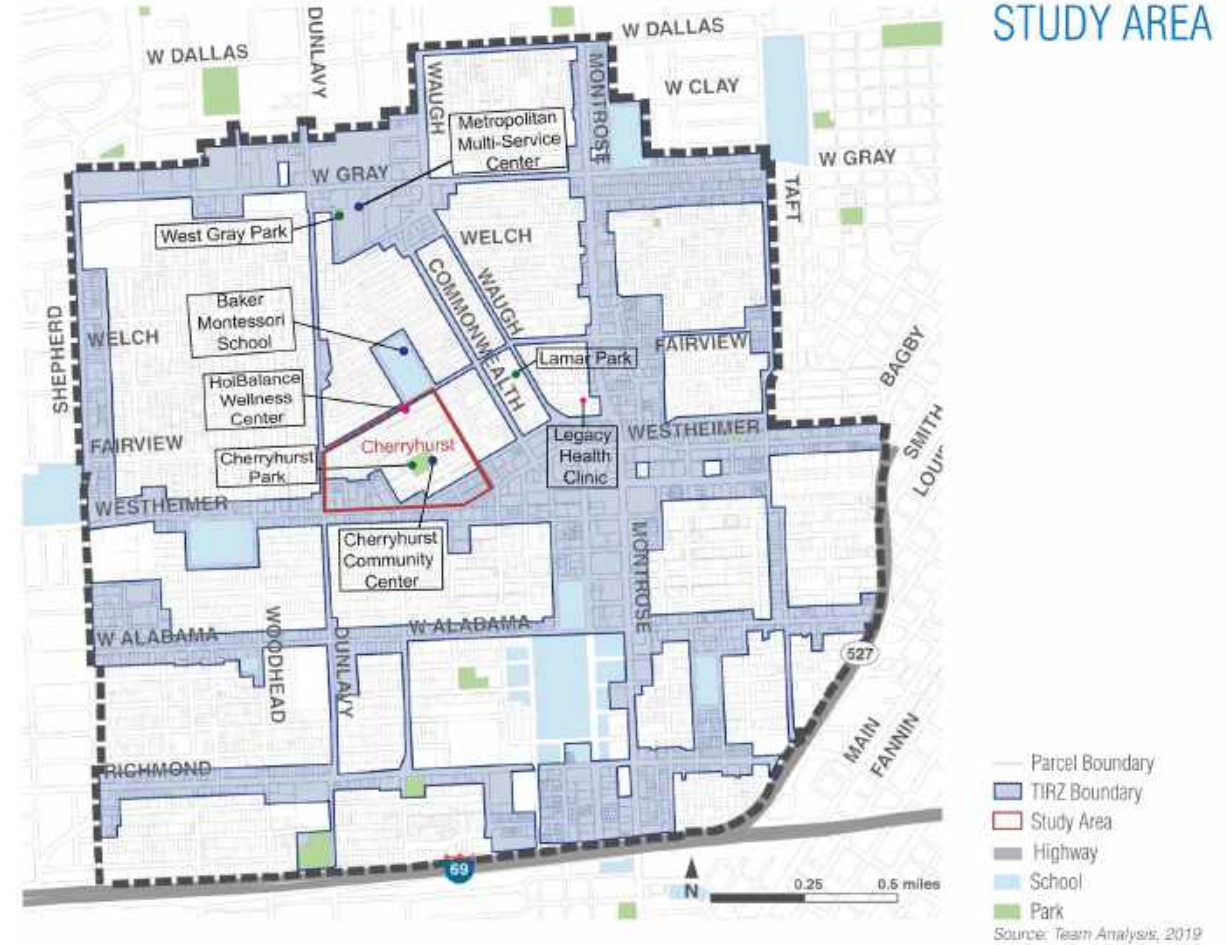
- Close gaps in sidewalk network around Baker Montessori, Cherryhurst Park, METRO Route 82
- Safe, ADA-compliant sidewalks
- Improve access to transit

Limits and Cost:

- Cherryhurst neighborhood – bound by Dunlavy St. , Fairview St., Westheimer Rd., and Yupon St.
- Exact streets / limits are To Be Determined

Current Status:

- Awarded \$200K through METRO 5310 program



Source: WalkBike Montrose

Q&A





Thank You!

Contact Us

- Info@MontroseHTX.org
- <https://MontroseHTX.org/>

