



MONTROSE
TAX INCREMENT REINVESTMENT ZONE 27

Montrose Boulevard

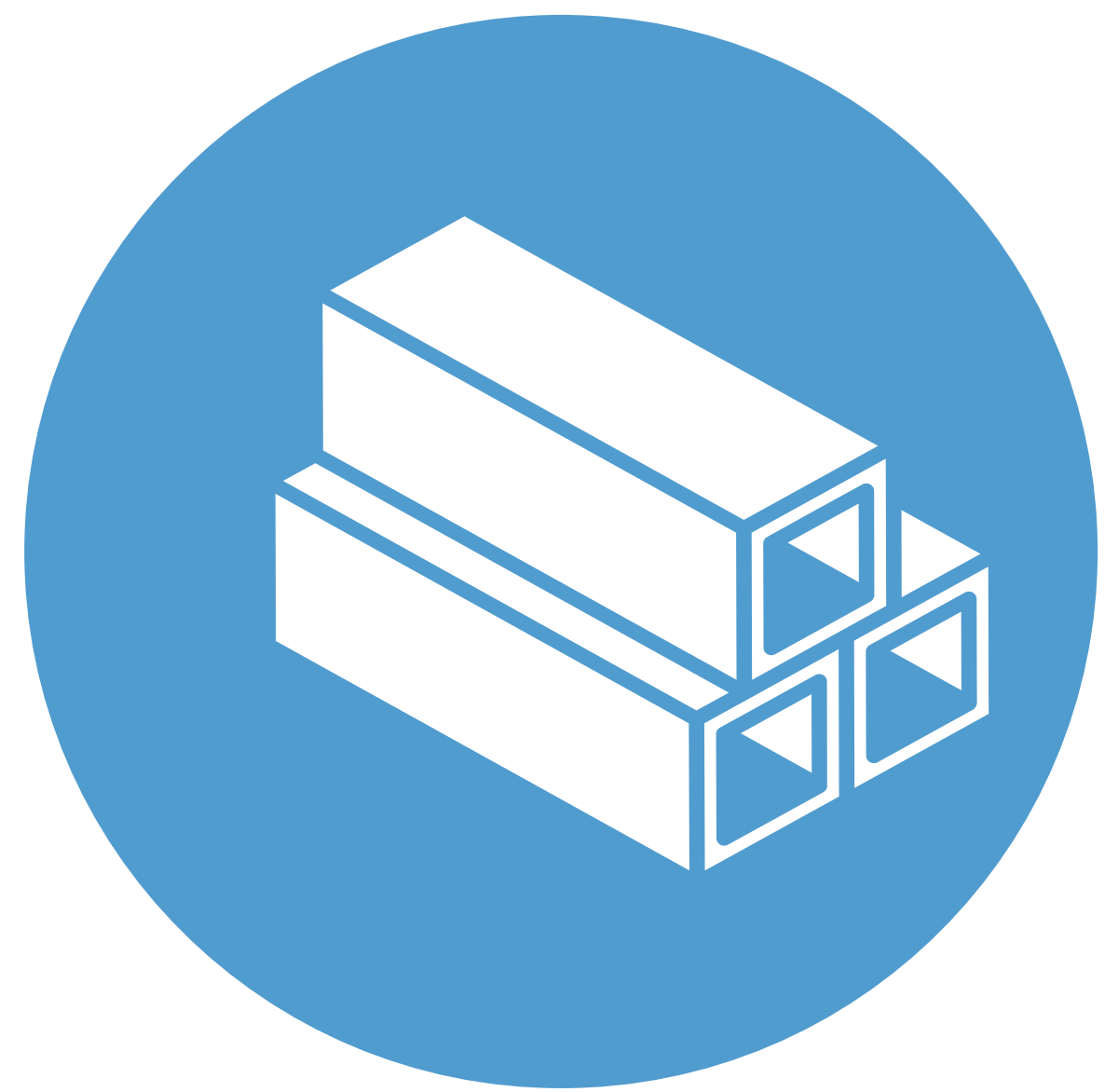
Segment I Improvements

From W Clay Street to
Allen Parkway

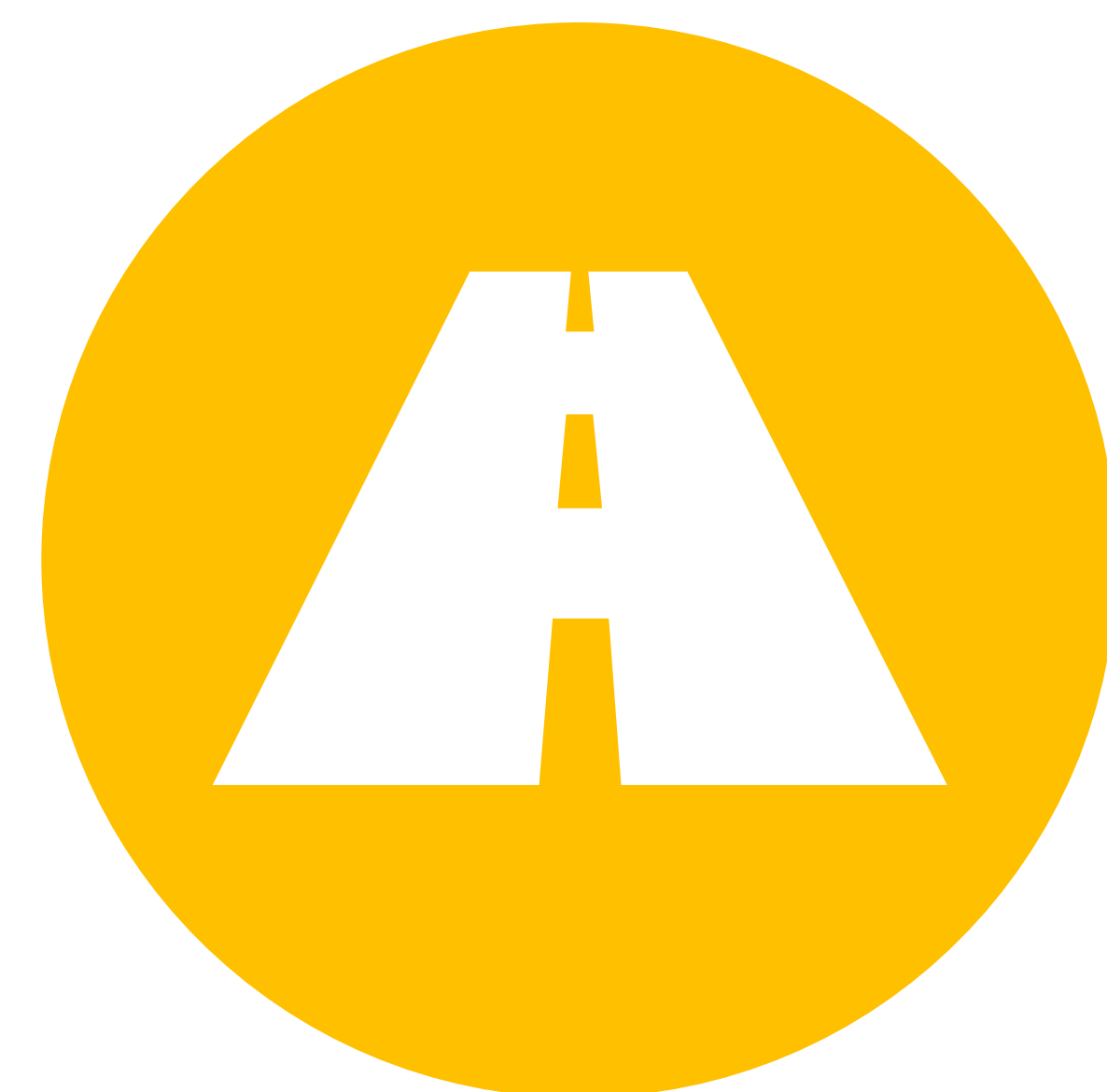
November 1, 2024



PROJECT GOALS



1. Improve Drainage



2. Improve Mobility and Safety for all Users
Consistent with City's Guiding Mobility Principles



3. Promote a Pedestrian-Friendly Environment



4. Preserve as many trees as possible

1. IMPROVE DRAINAGE



DRAINAGE IMPROVEMENTS

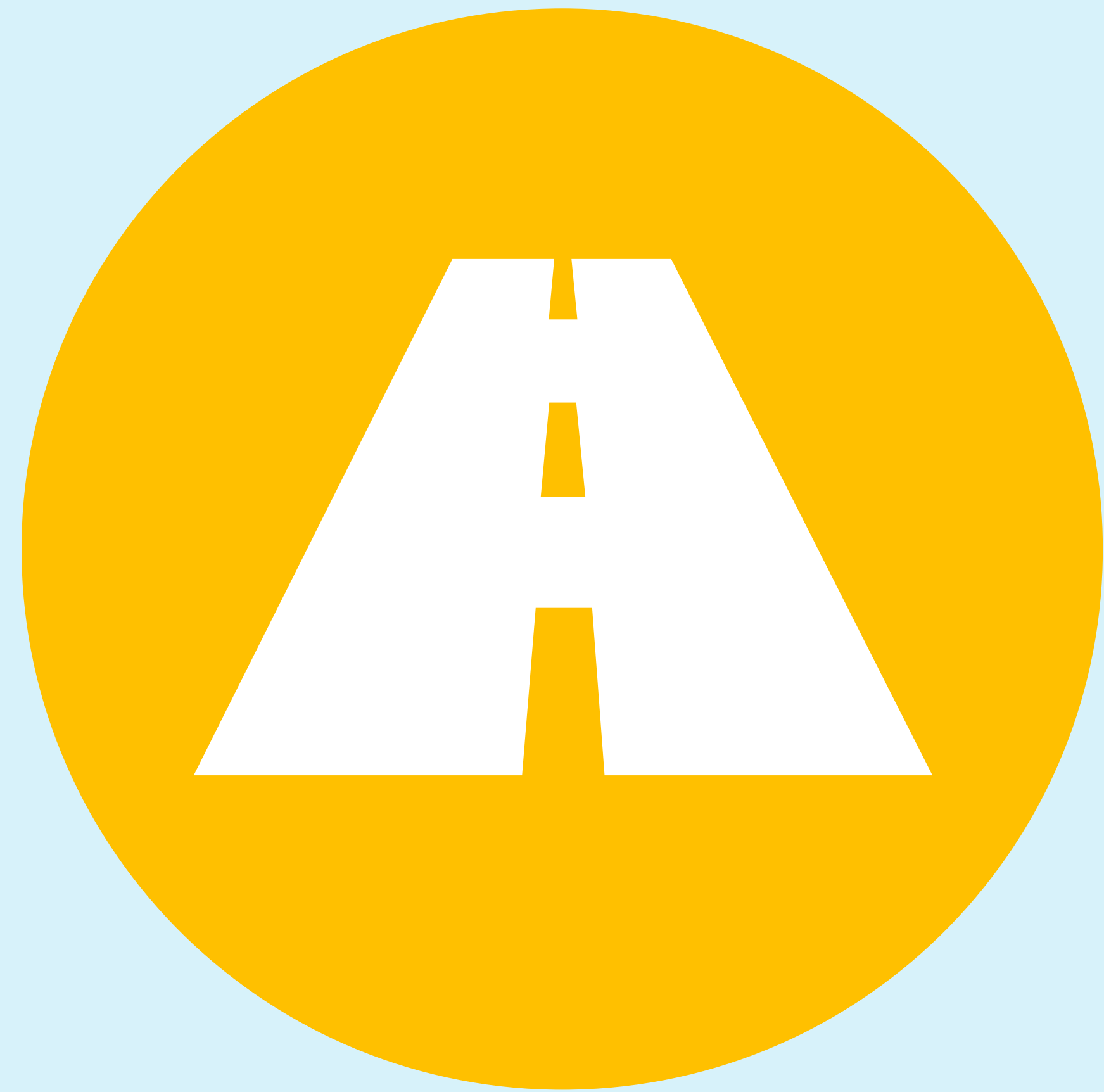
Proposed Improvements

- 10-ft x 10-ft Storm Sewers
- 5 acre-feet of detention
- Improvements are consistent with Regional Solution

Houston Public Works:

- Replace aging inlets from W Clay to Mecom Fountain
- Replace existing B inlets with BB inlets



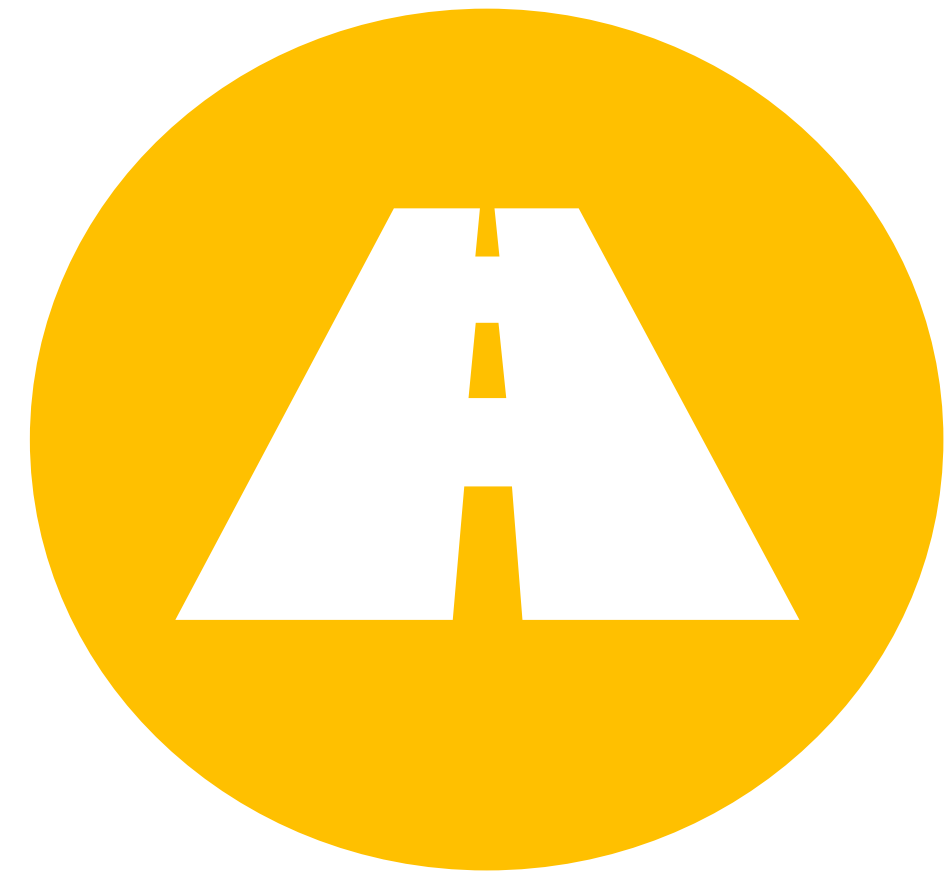


2. IMPROVE MOBILITY AND SAFETY FOR ALL USERS



3. PROMOTE A PEDESTRIAN- FRIENDLY ENVIRONMENT

HOUSTON GUIDING MOBILITY PRINCIPLES



Maintain General Purpose Lane Width and Number

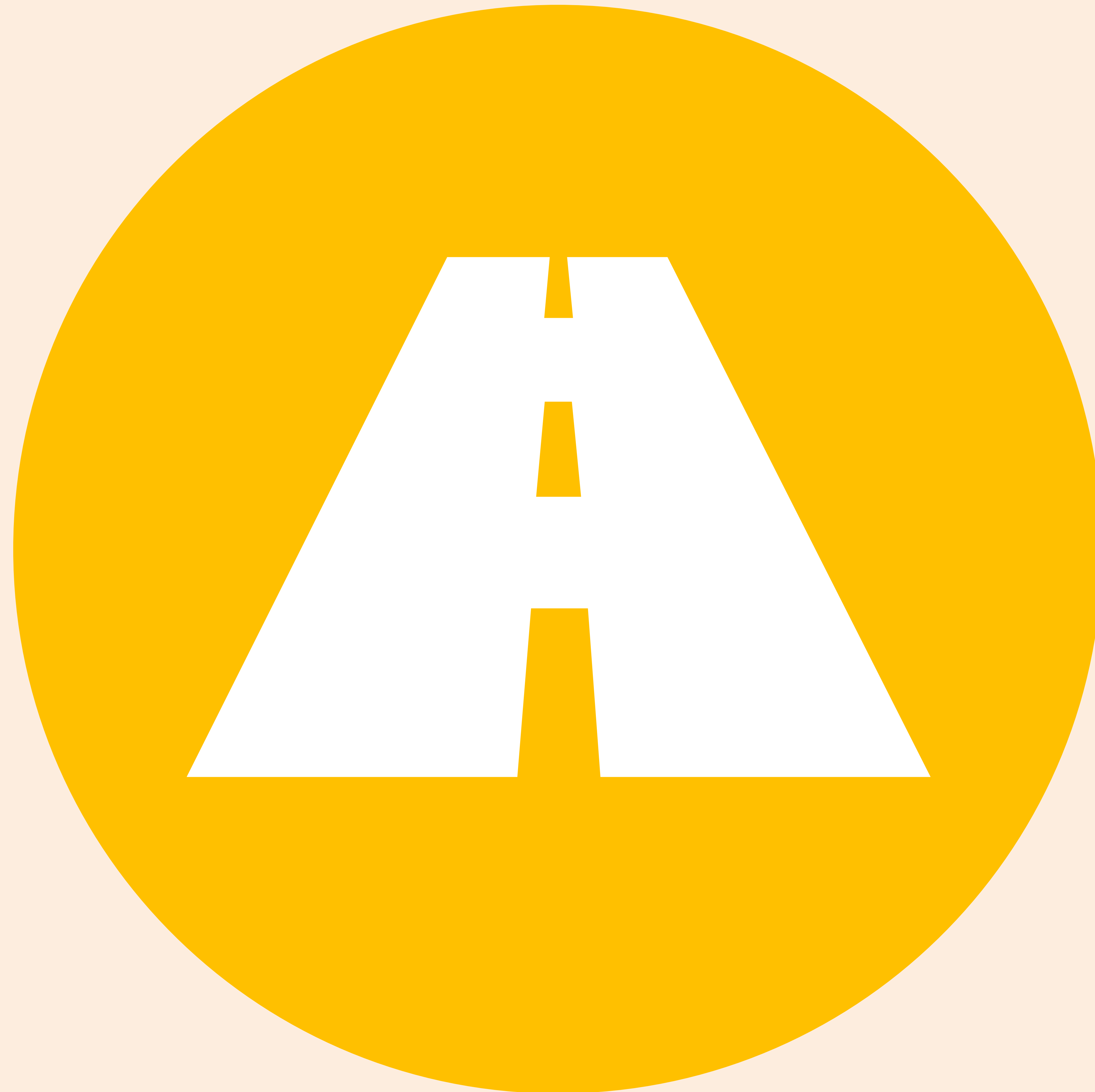


Provide Safe Sidewalks and Pedestrian Crossings



Ensure Reliable Service for Emergency Responders

ROADWAY USERS



ROADWAY USERS

- Maintain general purpose lane width and number
 - Motorists and transit users
 - Four lanes
 - 12 feet wide
 - Ensures reliable service for emergency responders.
- Upgrade corridor to accommodate METRO BOOST 56
 - New sidewalks
 - Accessibility upgrades
 - Bus shelters with lighting
 - Digital, real-time bus arrival information
- New upgraded traffic signal at W Dallas Street
- Lighting: City-owned Davit Streetlights
(Double luminaire)
 - Enhanced lighting for BOOST corridor
 - Enhanced safety and security
 - Increased visibility and road safety



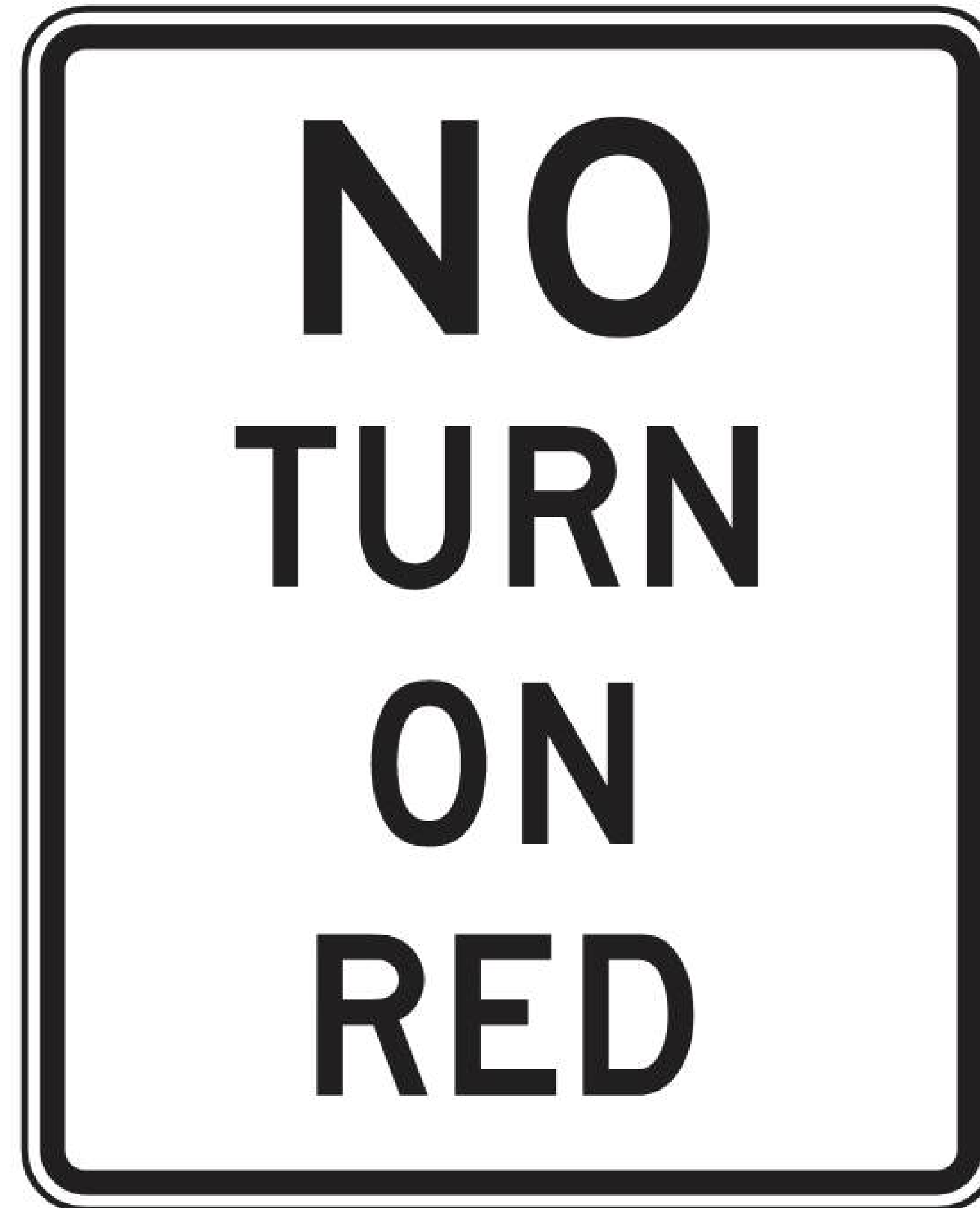
SAFE PEDESTRIAN CROSSINGS



PEDESTRIAN INTERSECTION SAFETY



Pedestrian signals



No right-turn on red



Audible pedestrian signals



Leading pedestrian intervals (FHWA data)

PEDESTRIAN INTERSECTION SAFETY



Truncated dome
warning devices



High-visibility
crosswalks



Wheelchair
ramps

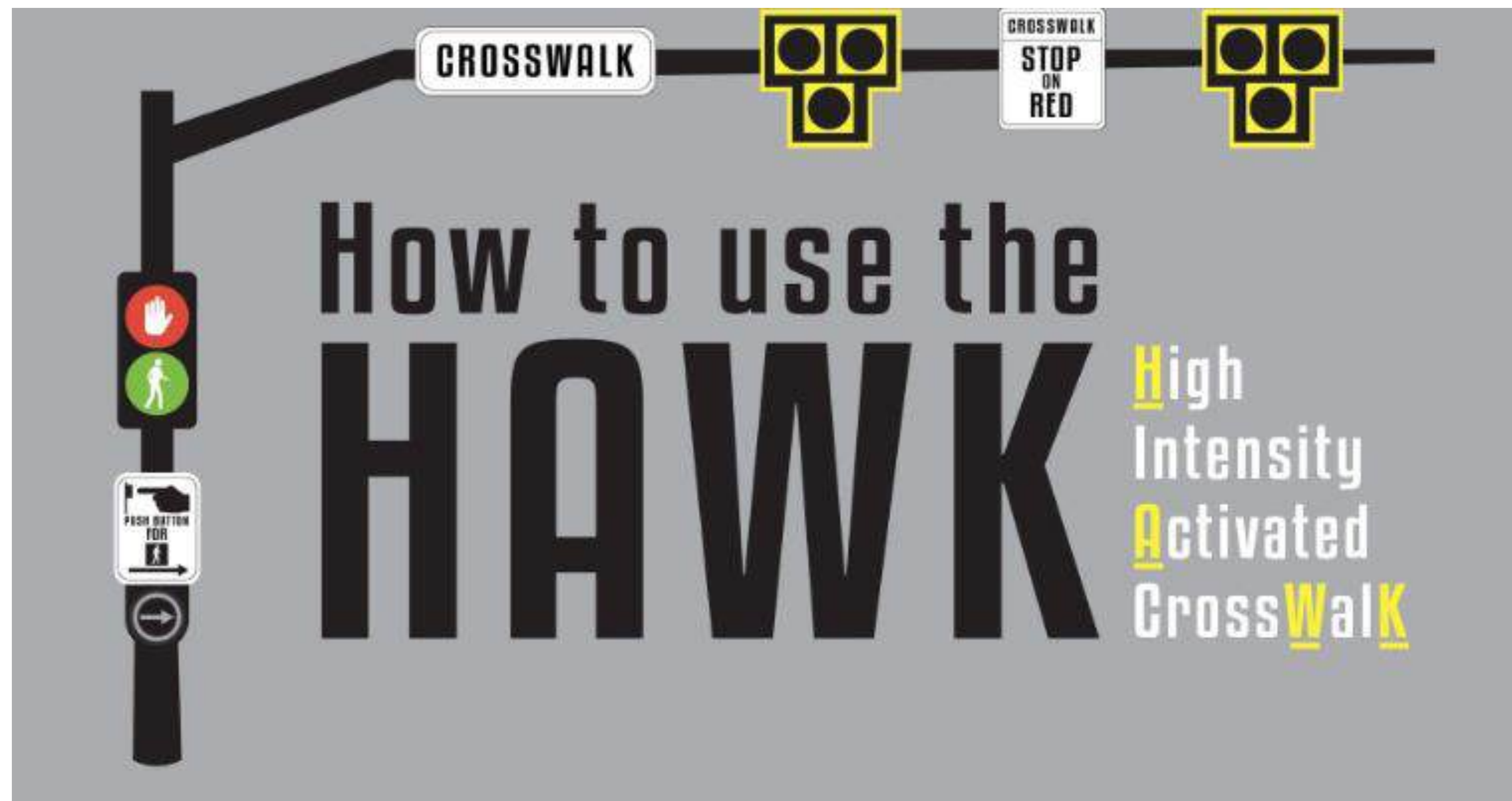
W CLAY ST TO W DALLAS ST

W Clay St Intersection

- Keep intersection open.
- Add a HAWK signal with pedestrian refuge directly south of the intersection.








HAWK SIGNAL



PEDESTRIANS

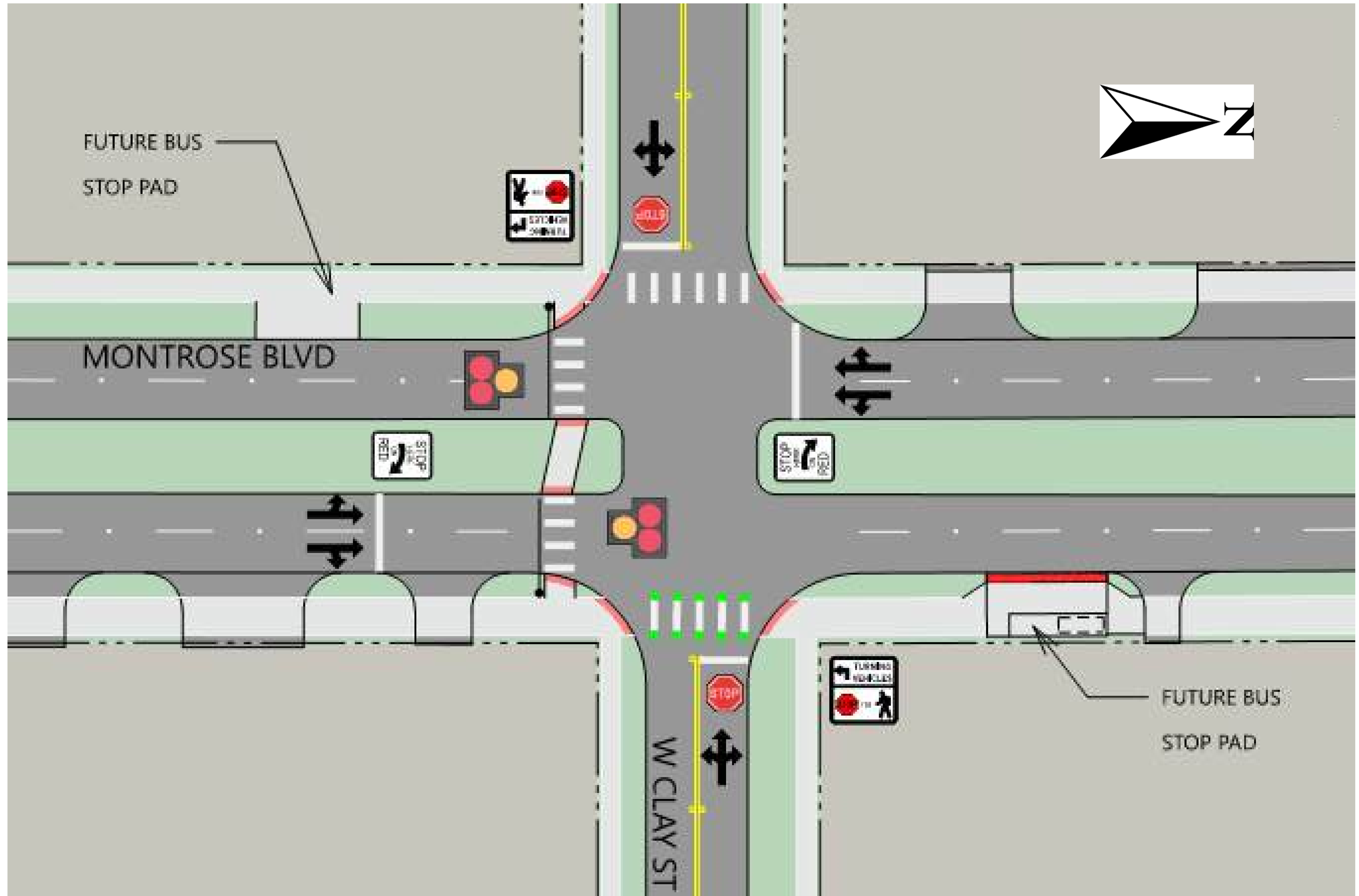
SEE THIS	DO THIS
	PUSH THE BUTTON
	STOP & WAIT for the WALK signal.
	START CROSSING Always watch for cars.
	FINISH CROSSING

DRIVERS

SEE THIS	DO THIS
	DRIVE Always look for people who plan to cross.
	SLOW DOWN A person has activated the push button.
	PREPARE TO STOP
	STOP for pedestrian. (As with any signal RED means STOP)
	STOP FIRST Proceed with caution if no people are present.



PRELIMINARY HAWK SIGNAL LAYOUT





3. PROMOTE A PEDESTRIAN-FRIENDLY ENVIRONMENT

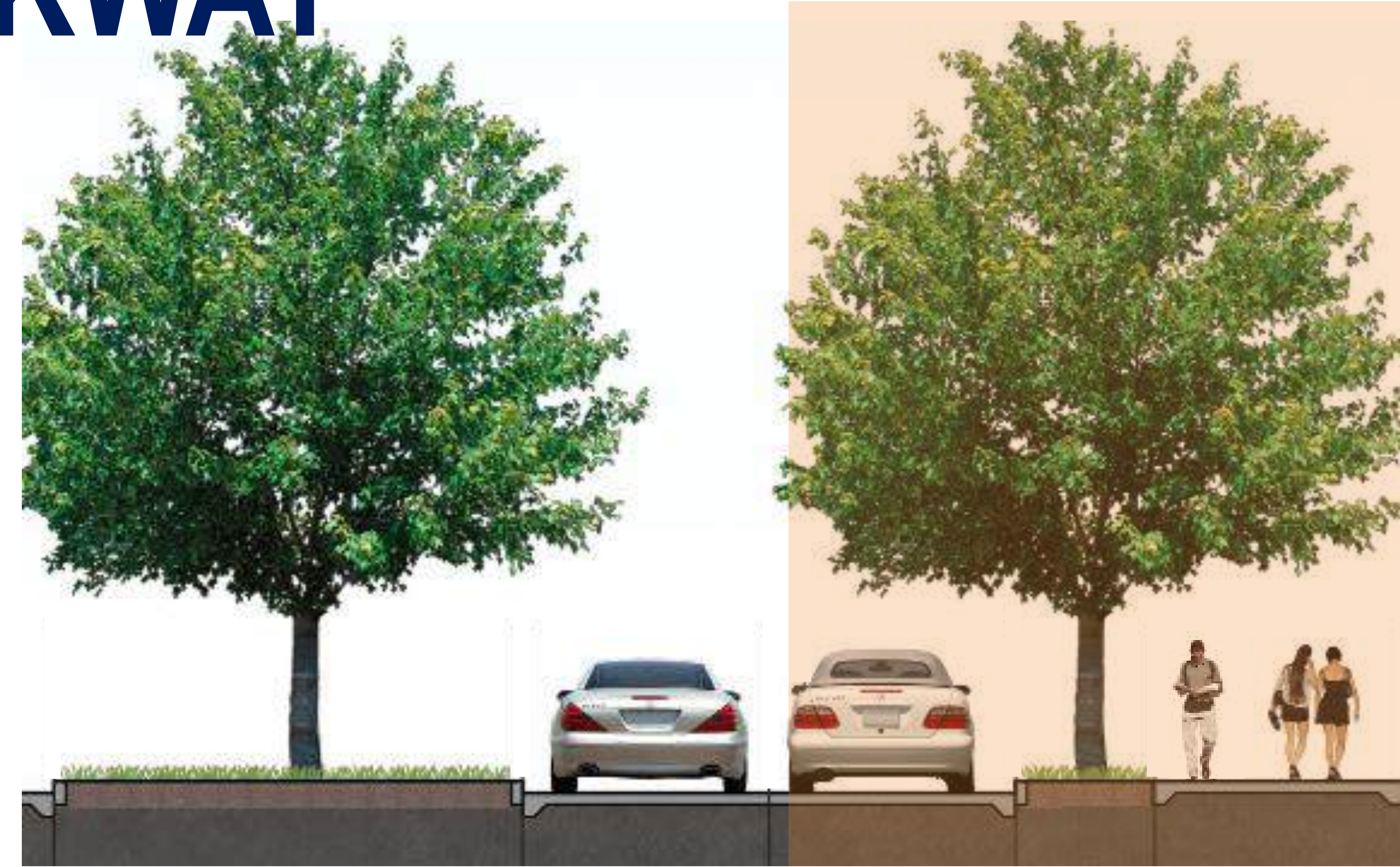


4. PRESERVE AS MANY TREES AS POSSIBLE

W DALLAS ST TO ALLEN PARKWAY

East Side

- 8-ft sidewalk.
- Pedestrian bridge over Allen Parkway to connect to Buffalo Bayou Hike/Bike Trail.
- Create tree canopy with new Cypress trees in safety buffer area.



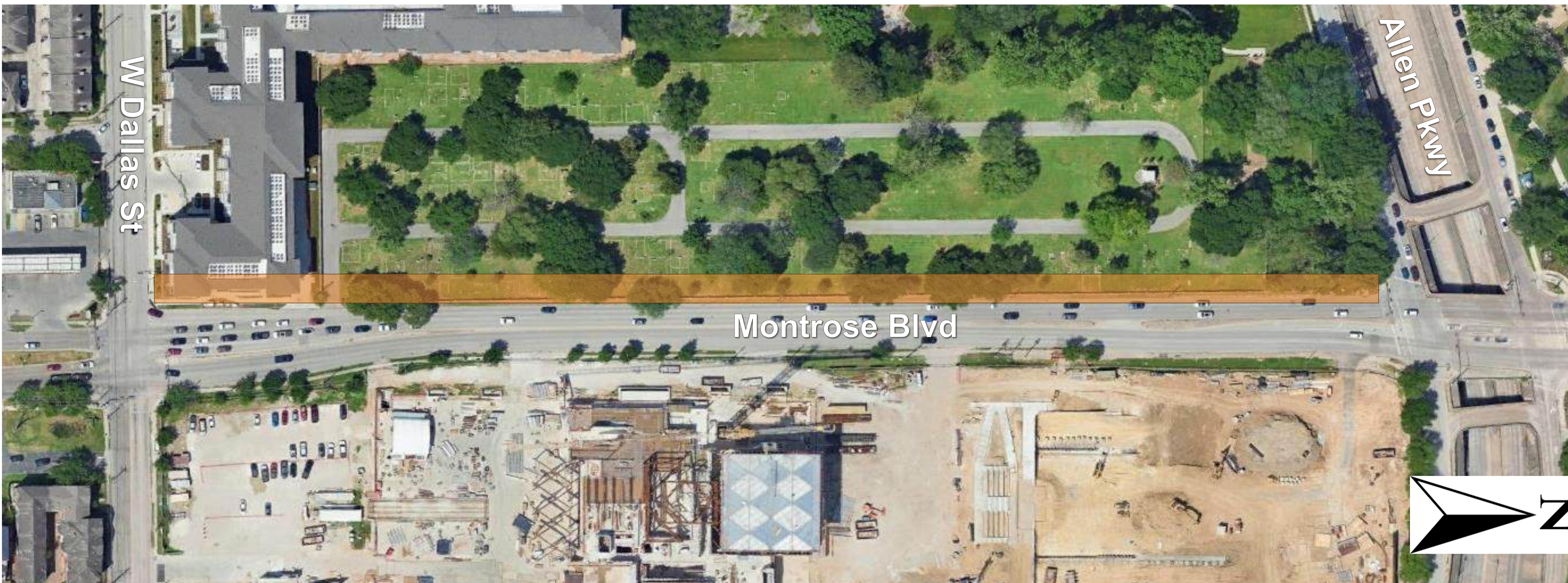
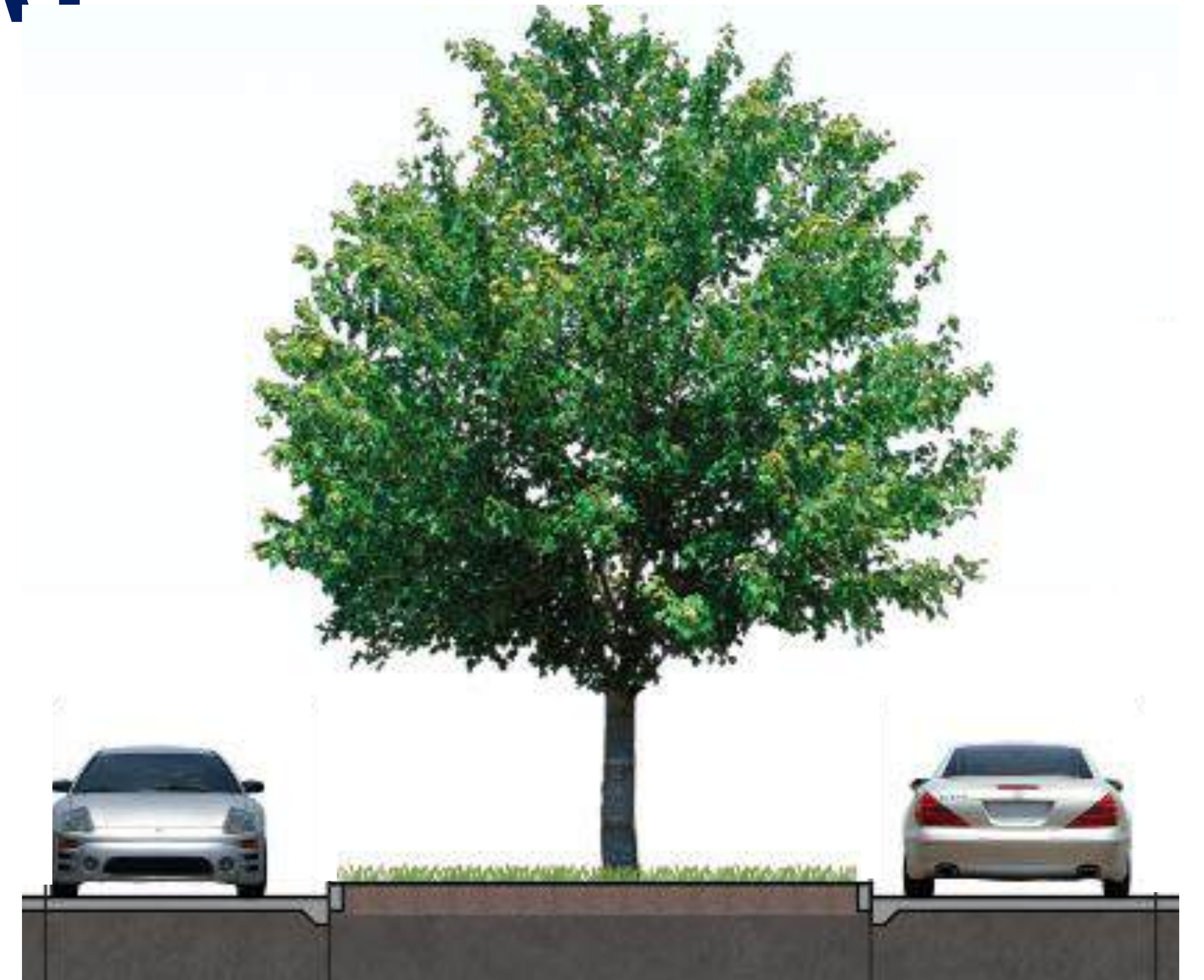
W DALLAS ST TO ALLEN PARKWAY

West Side

- Maintain existing landscape buffer and preserve existing trees.
- Create tree canopy with new Cypress trees.

Median

- Add a new median with Cypress trees to enhance traffic safety.
- Create tree canopy with new Cypress trees.



W CLAY ST TO W DALLAS ST

East Side

- 6-ft sidewalks.
- At tree locations, maintain existing sidewalk width to preserve all trees.
- At tree locations, evaluate the feasibility of adding tree grates to achieve 6 feet of width.
- Add live oak trees where space is available.



TREE GRATE EXAMPLE



W CLAY TO DALLAS ST

West Side

- 6-ft sidewalks.
- At trees, maintain existing sidewalk width to preserve all trees.
- At trees, evaluate the feasibility of adding tree grates to achieve 6-ft width.
- Add live oak trees where space is available.

Median

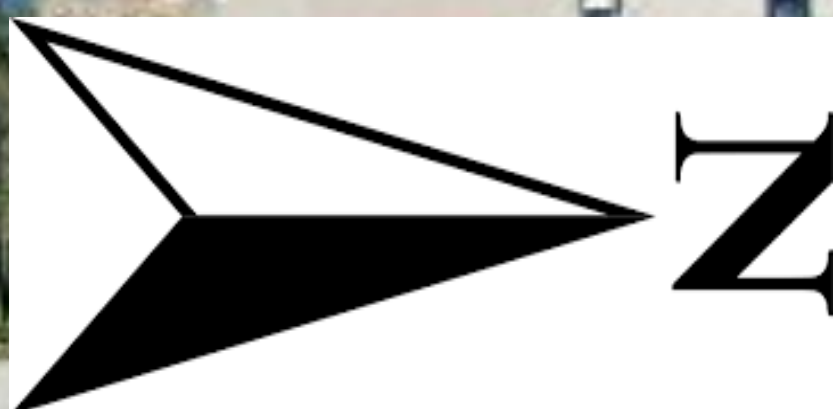
- Minor reduction in esplanade width to provide more growing space for existing trees on east and west sides.



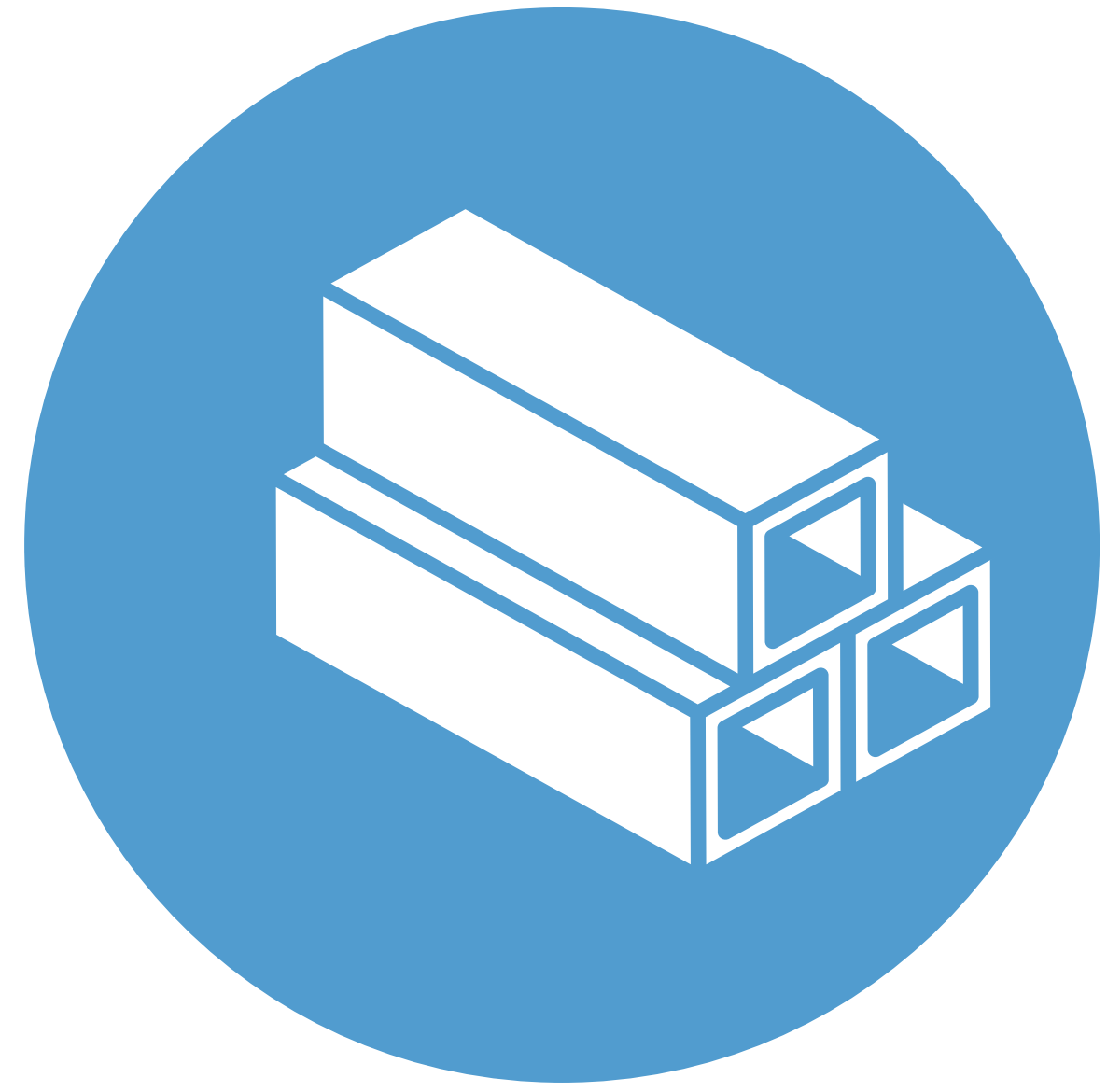
Montrose Blvd

W Clay St

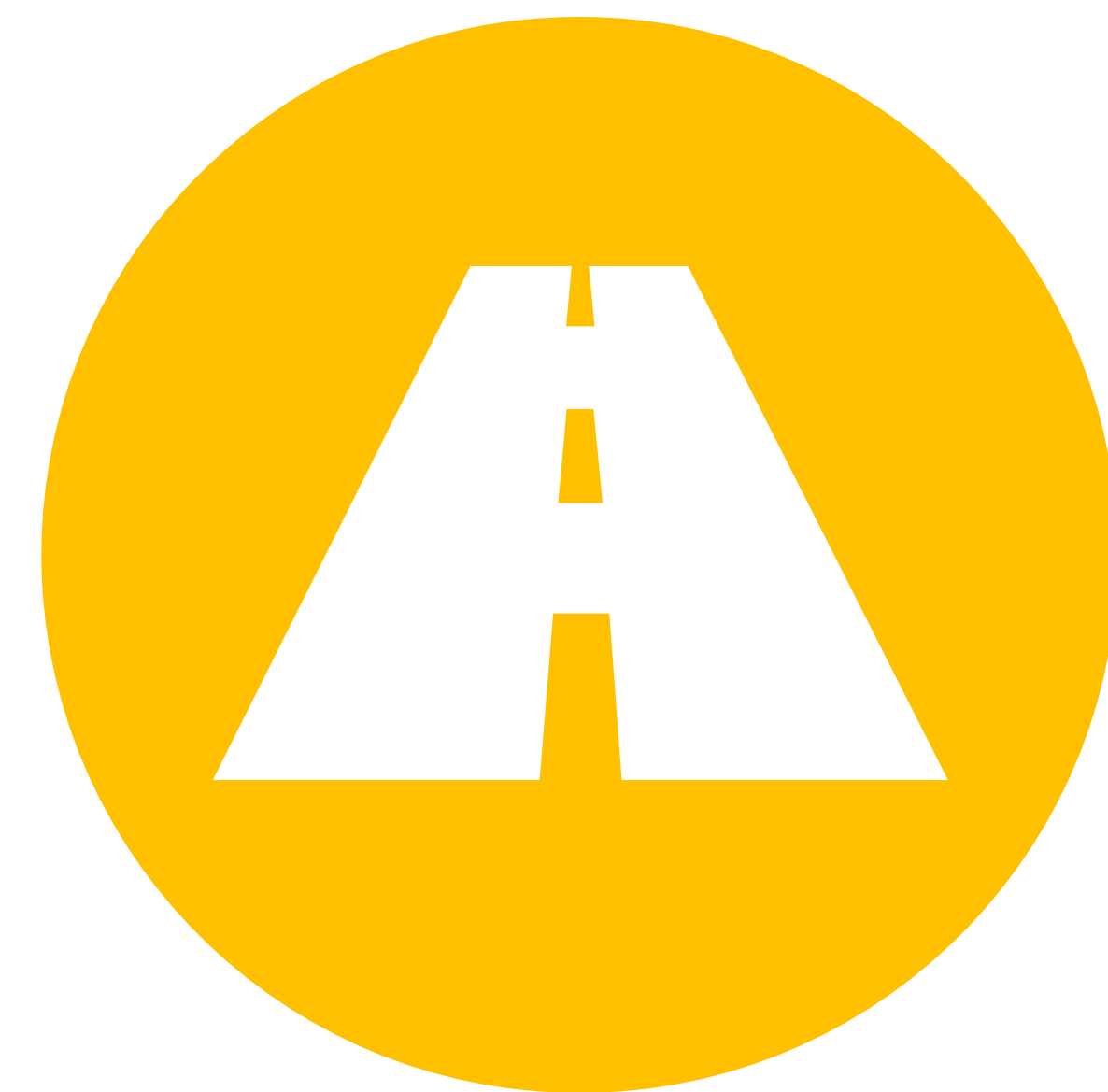
W Dallas St



SCOPE ACHIEVES PROJECT GOALS



1. Improve Drainage



2. Improve Mobility and Safety for all Users
Consistent with City's Guiding Mobility Principles



3. Promote a Pedestrian Friendly-Environment



4. Preserve as many trees as possible

Thank You!

Contact Us

- info@montrosehtx.org
- montrosehtx.org



MONTROSE
TAX INCREMENT REINVESTMENT ZONE 27