



MONTROSE
TAX INCREMENT REINVESTMENT ZONE 27

Montrose Boulevard

Segment I Improvements

From W Clay Street to
Allen Parkway

October 21, 2024



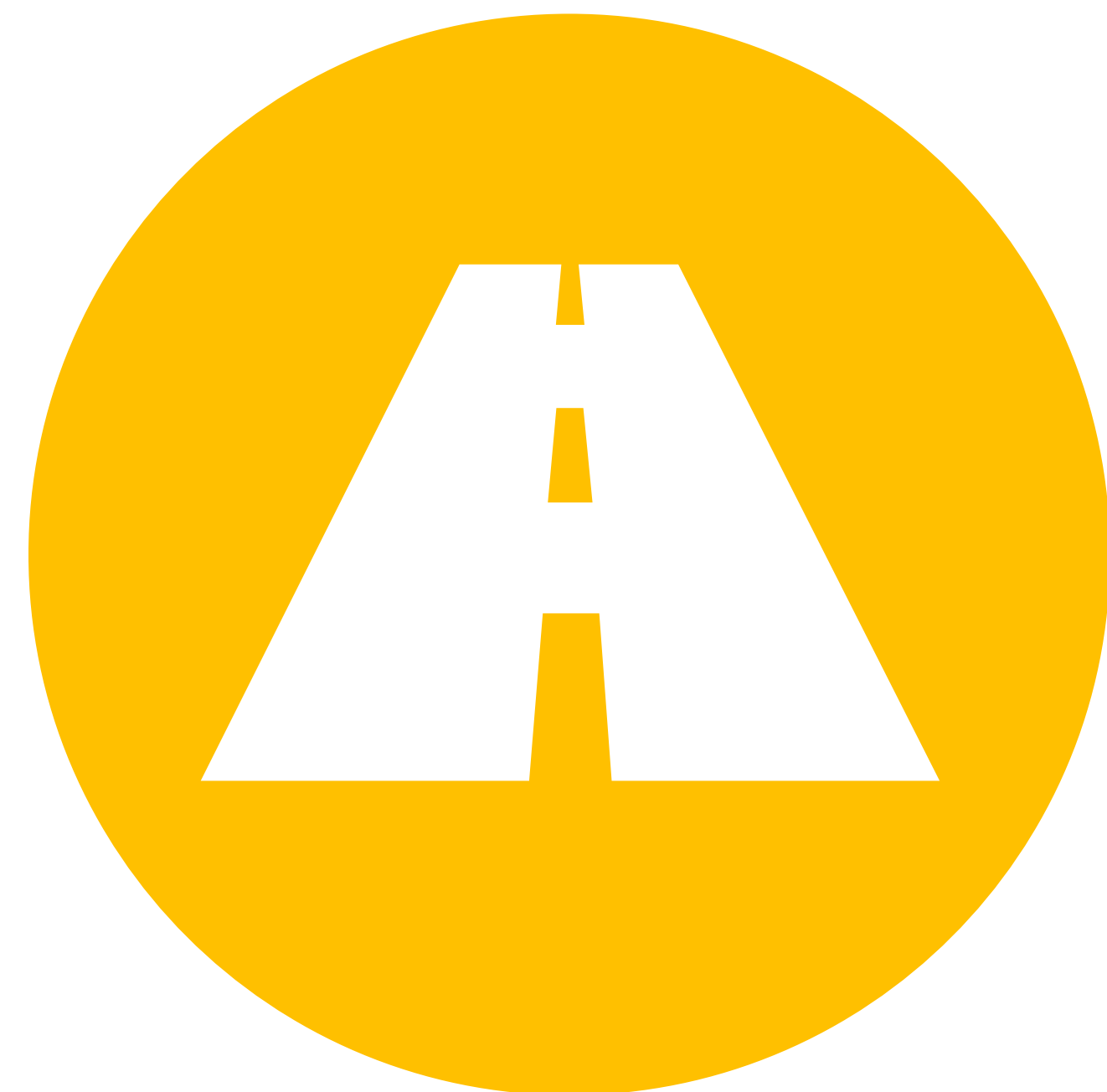
PROJECT OBJECTIVES



- Drainage Improvements



- Preserve as many trees as possible

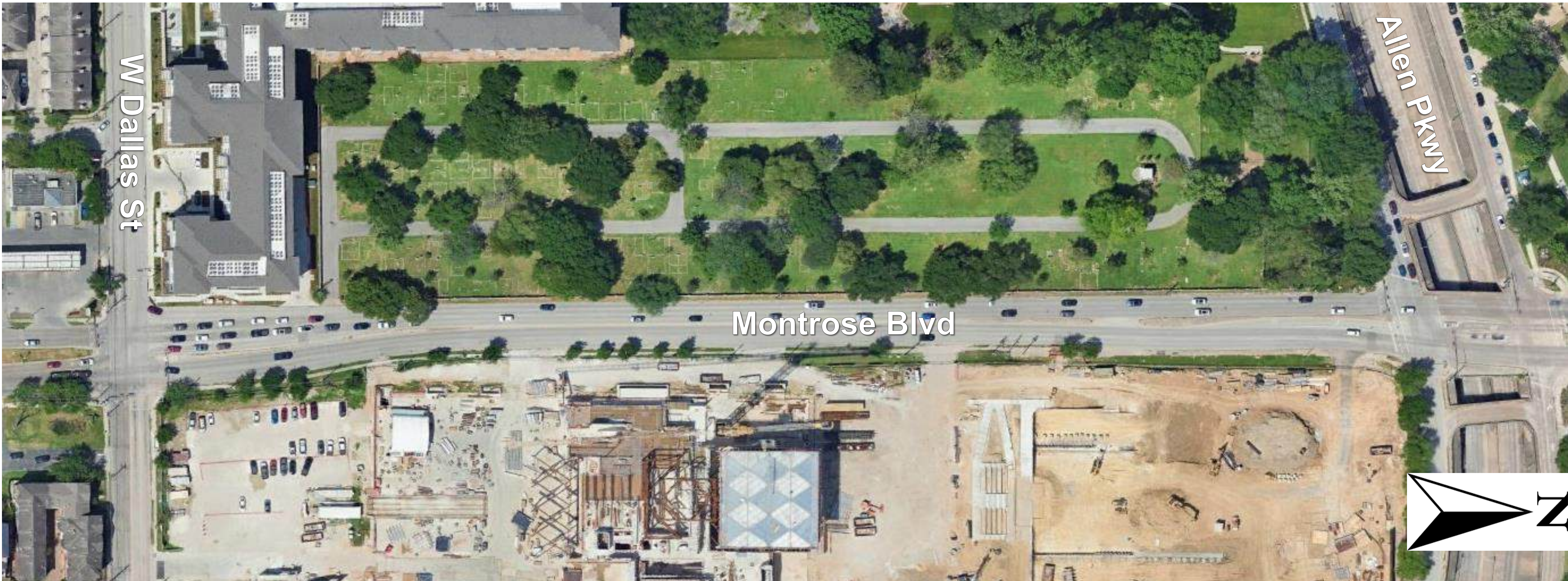


- Improve roadway surfaces
- Maintain the same number of 12-foot-wide general-purpose lanes

DALLAS ST TO ALLEN PARKWAY

East Side

- 8-ft sidewalk
- Pedestrian bridge over Allen Parkway to connect to Buffalo Bayou Hike/Bike Trail
- Add new Cypress trees in safety buffer area.



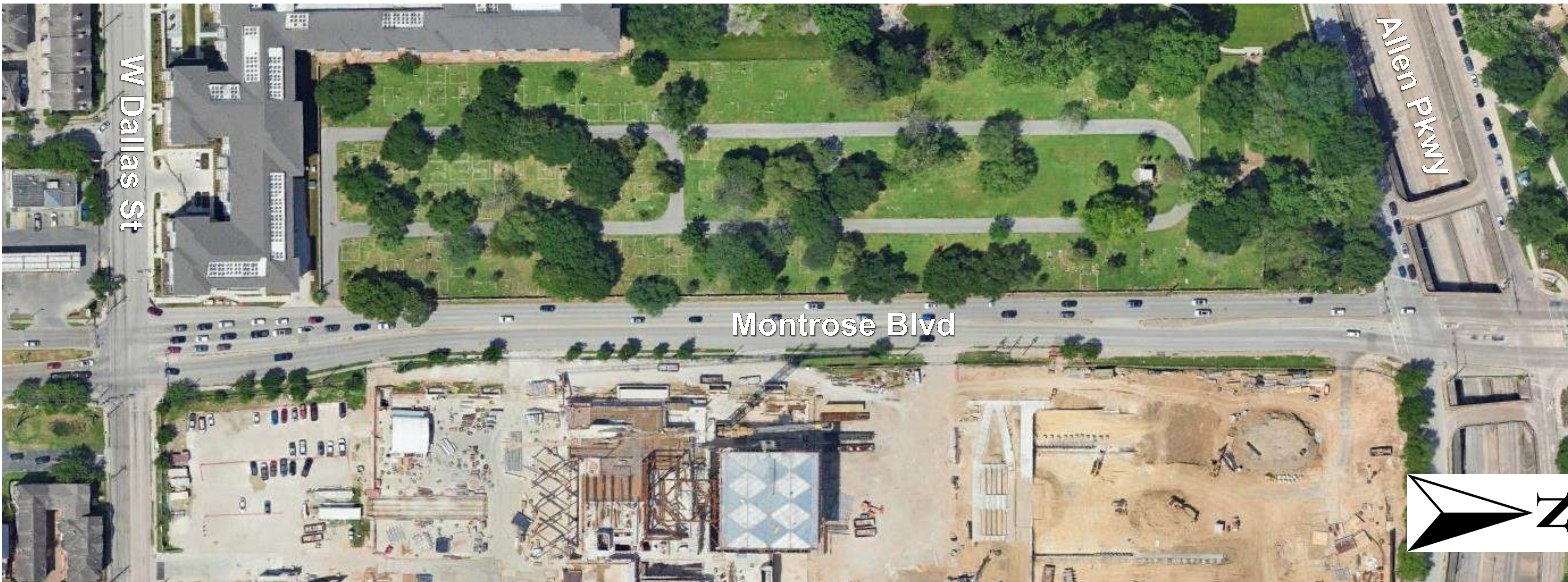
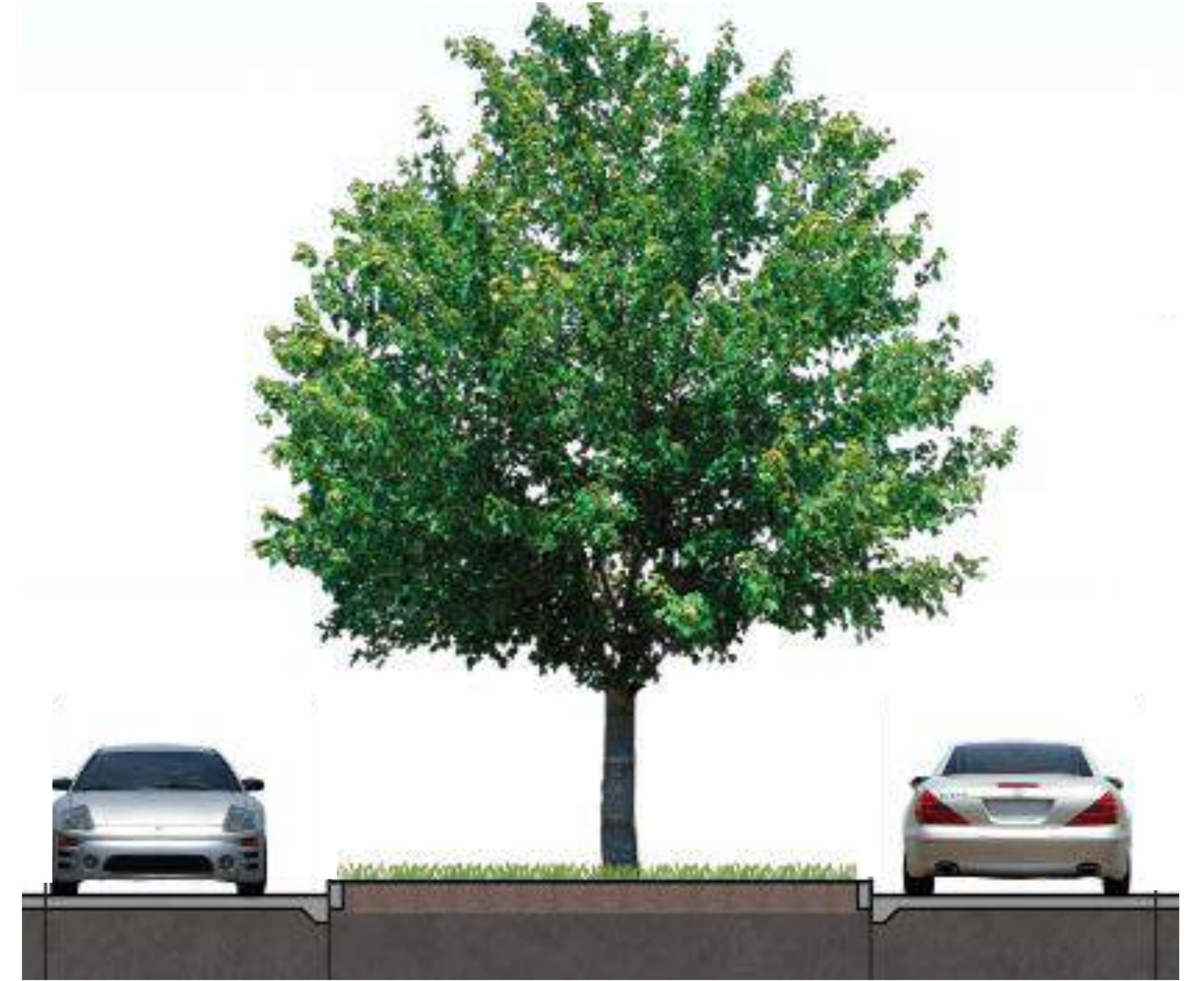
DALLAS ST TO ALLEN PARKWAY

West Side

- Omit the proposed sidewalk and preserve existing trees.
- Add new Cypress trees.

Median

- Median with Cypress trees and a left turn lane at the Ismaili Center.



W CLAY TO DALLAS ST

East Side

- Maintain existing sidewalk width to preserve all trees.
- 6-ft sidewalks everywhere else.
- Evaluate feasibility of adding live oak trees.



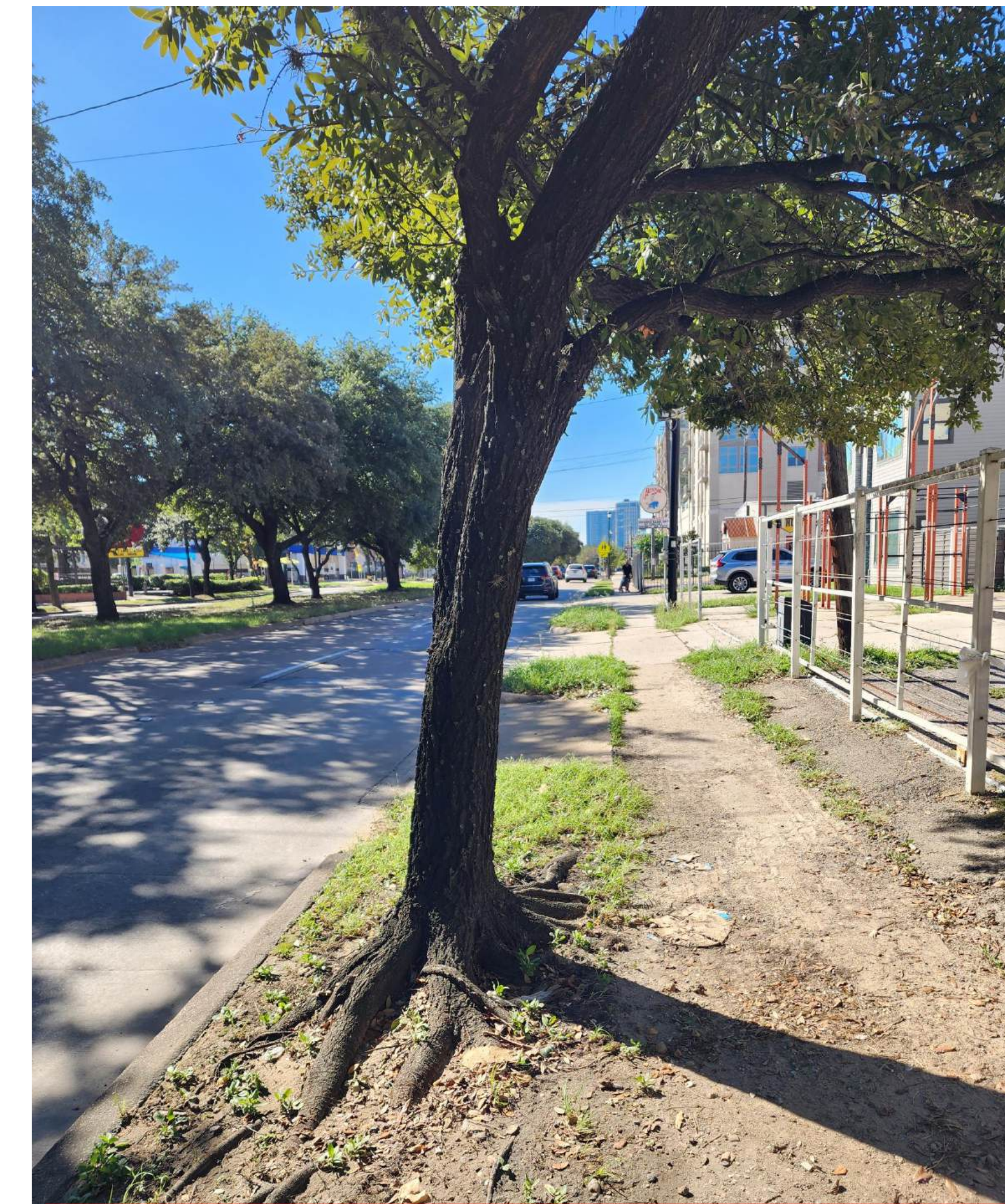
W CLAY TO DALLAS ST

West Side

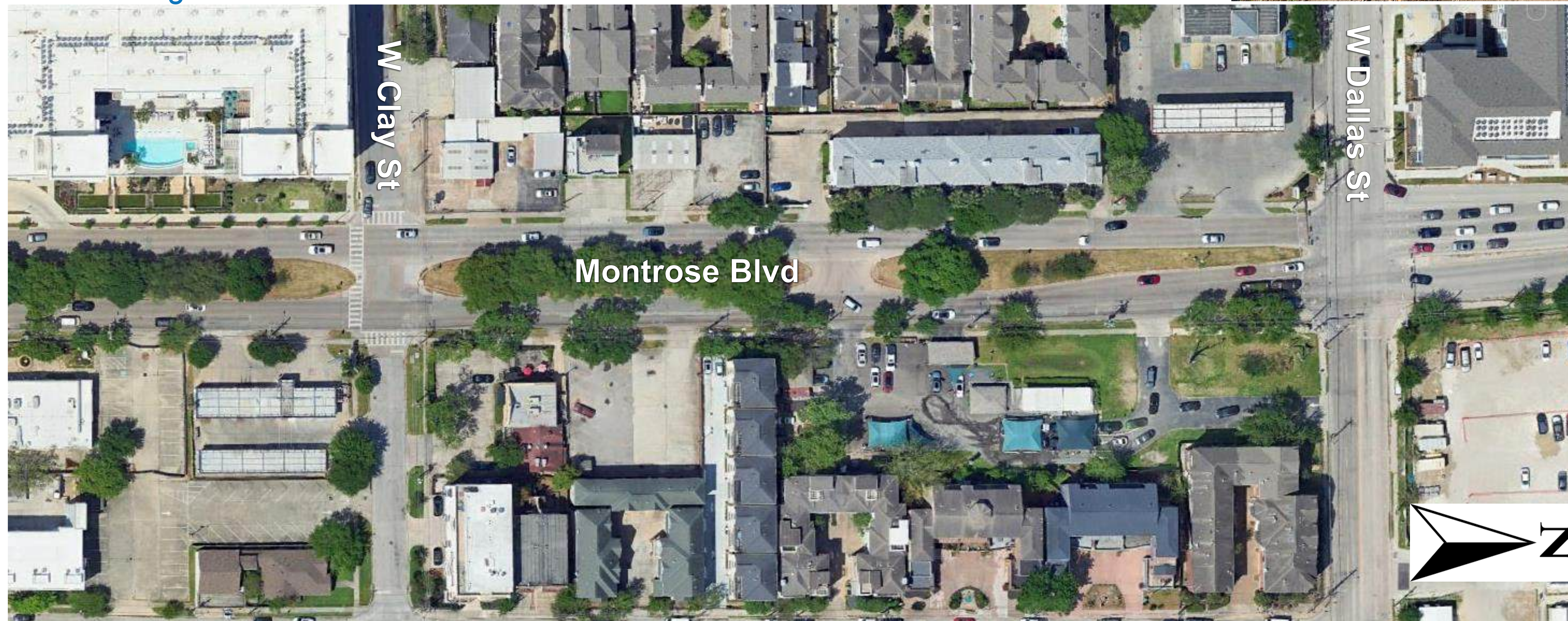
- Maintain existing sidewalk width to preserve all trees.
- 6-ft sidewalks everywhere else.
- Add live oak trees where space is available.

Median

- Minor reduction in esplanade width to provide more growth space for existing trees on east and west sides.



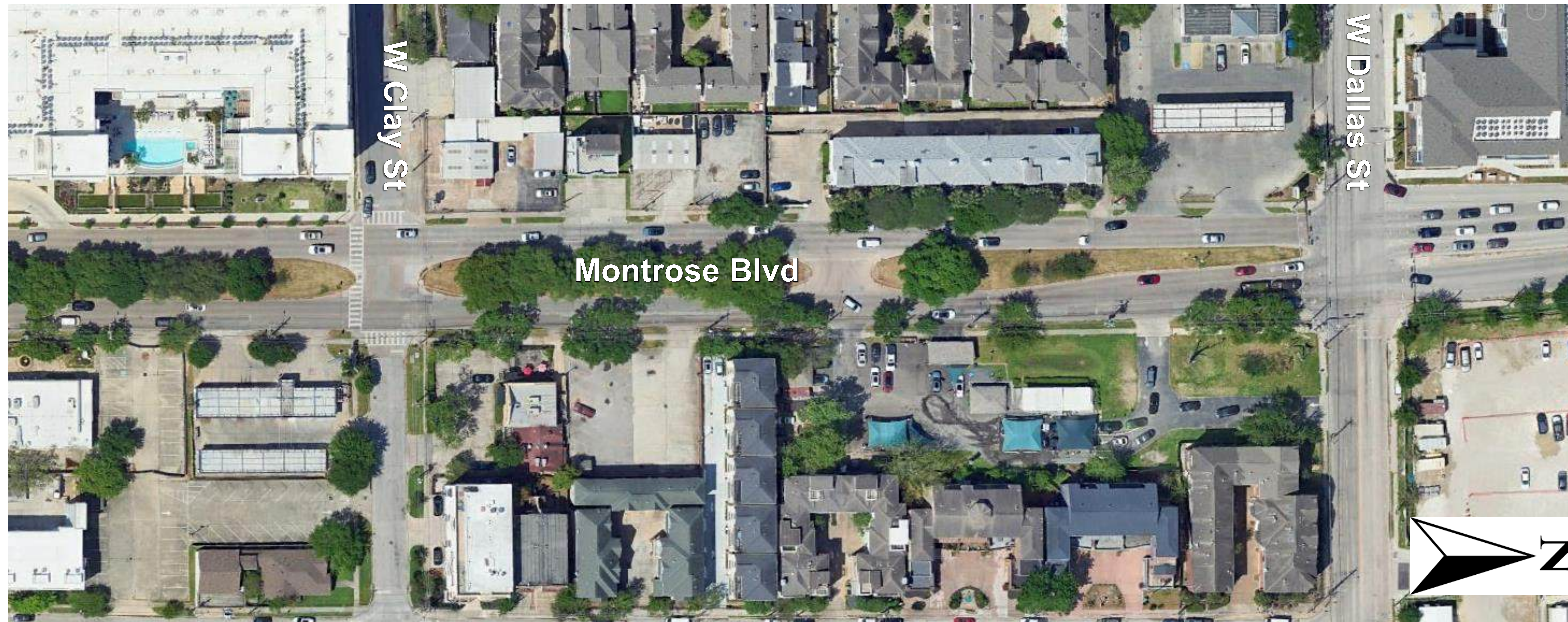
Restricted Grow Space Condition



W CLAY TO DALLAS ST

W Clay St Intersection

- Keep intersection open.
- Add a HAWK signal with pedestrian refuge directly south of the intersection.



MISCELLANEOUS ITEMS

Other Items

- Maintain lane widths at 12-ft, as in existing.
- Match existing curbs at W Dallas St and Allen Parkway intersections to the degree possible.
- Drainage: 10-ft x 10-ft Storm sewers
 - 5 acre-ft of detention
- Propose City-owned Davit streetlights (double luminaire).
 - Enhanced lighting for BOOST corridor.

Houston Public Works:

- Replace aging inlets between W Clay and Mecom Fountain.

Schedule

- Estimating 60 days
- Two dedicated teams
- Traffic control sequence – north of Dallas



Thank You!

Contact Us

- info@montrosehtx.org
- montrosehtx.org



MONTROSE
TAX INCREMENT REINVESTMENT ZONE 27