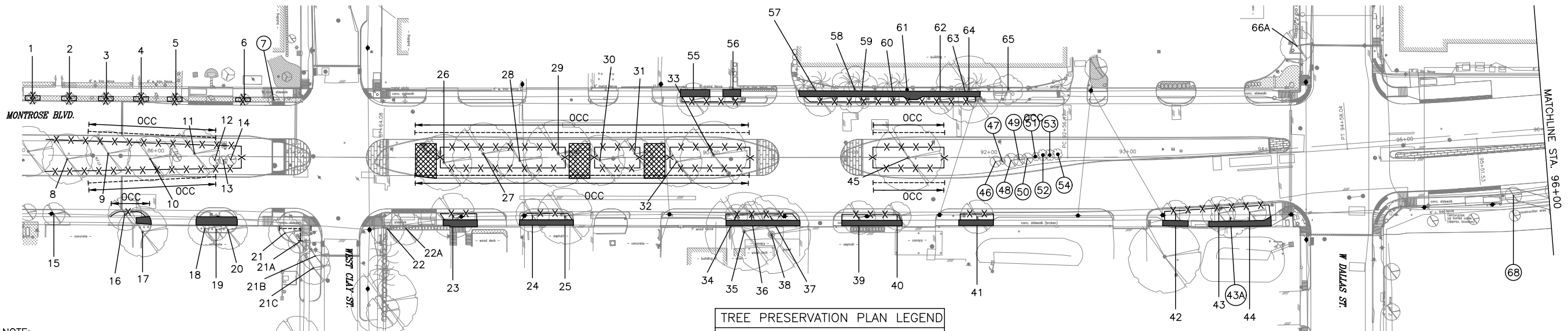
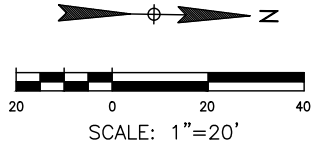
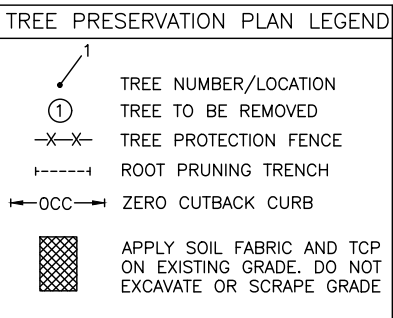


Plotted on: \$DATE\$ \$TIME\$ \$USER\$

Pen Table: \$PENTBL\$  
Plot Driver: \$PLDRVL\$



**NOTE:**  
 1. THIS TREE PROTECTION PLAN WAS DEVELOPED WITH INFORMATION PROVIDED BY DESIGN ENGINEER IN DRAWINGS DATED DECEMBER 2024. THE PLAN CONSIDERS ALL FITTINGS, VERTICAL OFFSETS AND AREAS OF NECESSARY EXCAVATION. CHANGES MADE TO DESIGN MAY COMPROMISE THE TREE PROTECTION PLAN. REFER SPECIFICATIONS 01562 AND 02915.  
 2. CN KOEHL URBAN FORESTRY, INC. HAS NOT BEEN CONTRACTED TO COMPLETE ANY TREE RISK ASSESSMENTS ON THIS PROJECT—THIS TPP INCLUDES PROTECTION MEASURES FOR SPECIES OF TREES PROTECTED BY APPLICABLE ORDINANCE ONLY. CN KOEHL URBAN FORESTRY, INC. DOES NOT GUARANTEE CONDITION OR STRUCTURAL INTEGRITY OF ANY TREE LOCATED ON OR ADJACENT TO THIS PROJECT.  
 3. IN AREAS WHERE INDIVIDUAL TREES HAVE NOT BEEN TIED IN BY SURVEY, APPROXIMATE LOCATION IS INDICATED ON TPP WITH A DOT AND TREE NUMBER. ACCURACY OF REPRESENTED LOCATION IS NOT GUARANTEED BY CN KOEHL URBAN FORESTRY, INC.  
 4. THE CONTRACTOR'S ARBORIST WILL MARK LOCATIONS OF TREES TO BE PLANTED AND OBTAIN APPROVAL BY CITY ENGINEER AND CITY FORESTER BEFORE PURCHASING OR EXCAVATING PLANTING HOLE OF EACH TREE.



Tree No.	Description	Chapter 33 Status	Comments	Treatment
1	4" Live Oak	Protected tree	Just beyond project scope	Fence, Clearance prune
2	4" Live Oak	Protected tree	Just beyond project scope	Fence, Clearance prune
3	4" Live Oak	Protected tree	Just beyond project scope	Fence, Clearance prune
4	4" Live Oak	Protected tree	Just beyond project scope	Fence, Clearance prune
5	5" Live Oak	Protected tree		Fence, Clearance prune
6	4" Live Oak	Protected tree		Fence, Clearance prune
7	4" Live Oak	Protected tree	Remove for wider sidewalk/path, Coordinate relocation with project engineer and landscape architect	Relocate per standard specification 02915, Coordinate location with project engineer and landscape architect
8	17" Live Oak	Protected tree		Fence, Clearance prune
9	14" Live Oak	Protected tree		Zero curb cutback, Root prune for street, Fence, Clearance prune, Crown Cleaning prune, Root stimulate
10	15" Live Oak	Protected tree		Zero curb cutback, Root prune for street, Fence, Clearance prune, Crown Cleaning prune, Root stimulate
11	15" Live Oak	Protected tree		Zero curb cutback, Root prune for street, Fence, Clearance prune, Crown Cleaning prune, Root stimulate
12	4" Eastern Redbud	Protected tree		Fence, Clearance prune
13	4" Eastern Redbud	Protected tree		Fence, Clearance prune
14	4" Eastern Redbud	Protected tree		Fence, Clearance prune
15	11" Sugarberry	Not protected		
16	10" Live Oak	Protected tree		Zero curb cutback, Fence, Clearance prune
17	14" Live Oak	Not protected	Private tree, Topped	Demo-form-pour walk without damage to tree roots 1" diameter or larger
18	11" Live Oak	Not protected	Private tree, Topped	Demo-form-pour walk without damage to tree roots 1" diameter or larger
19	10" Live Oak	Not protected	Private tree, Topped	Demo-form-pour walk without damage to tree roots 1" diameter or larger
20	13" Live Oak	Not protected	Private tree, Topped	
21	12" Live Oak	Not protected	Private tree, Topped	
21A	10" Bradford Pear	Not protected	Private tree, Topped	
21B	11" Bradford Pear	Not protected	Topped	
21C	11" Bradford Pear	Not protected	Topped	
22	10" Sweetgum	Not protected	Failed in Hurricane Beryl, Poor condition, Private tree	
22A	10" Sweetgum	Not protected	Private tree	
23	14" Live Oak	Protected tree		Demo-form-pour walk without damage to tree roots 1" diameter or larger, Fence, Crown Cleaning Prune, Root stimulate
24	10" Live Oak	Protected tree		Demo-form-pour walk without damage to tree roots 1" diameter or larger, Fence, Crown Cleaning Prune, Root stimulate
25	18" Live Oak	Protected tree		Demo-form-pour walk without damage to tree roots 1" diameter or larger, Fence, Crown Cleaning Prune, Root stimulate
26	17" Live Oak	Protected tree		Zero curb cutback, Root prune for street, Fence, Clearance prune, Crown Cleaning prune, Root stimulate, Apply soil fabric and TCP on existing grade-do not excavate or scape existing grade
27	19" Live Oak	Protected tree		Zero curb cutback, Root prune for street, Fence, Clearance prune, Crown Cleaning prune, Root stimulate
28	15" Live Oak	Protected tree		Zero curb cutback, Root prune for street, Fence, Clearance prune, Crown Cleaning prune, Root stimulate
29	19" Live Oak	Protected tree		Zero curb cutback, Root prune for street, Fence, Clearance prune, Crown Cleaning prune, Root stimulate, Apply soil fabric and TCP on existing grade-do not excavate or scape existing grade
30	18" Live Oak	Protected tree		Zero curb cutback, Root prune for street, Fence, Clearance prune, Crown Cleaning prune, Root stimulate, Apply soil fabric and TCP on existing grade-do not excavate or scape existing grade
31	14" Live Oak	Protected tree		Zero curb cutback, Root prune for street, Fence, Clearance prune, Crown Cleaning prune, Root stimulate, Apply soil fabric and TCP on existing grade-do not excavate or scape existing grade
32	20" Live Oak	Protected tree		Zero curb cutback, Root prune for street, Fence, Clearance prune, Crown Cleaning prune, Root stimulate, Apply soil fabric and TCP on existing grade-do not excavate or scape existing grade

Tree No.	Description	Chapter 33 Status	Comments	Treatment
33	22" Live Oak	Protected tree		Zero curb cutback, Root prune for street, Fence, Clearance prune, Crown Cleaning prune, Root stimulate
34	10" Live Oak	Protected tree		Demo-form-pour walk without damage to tree roots 1" diameter or larger, Fence, Crown Cleaning Prune, Root stimulate
35	23" American Elm	Not protected	Private tree, Topped	Demo-form-pour walk without damage to tree roots 1" diameter or larger
36	10" Live Oak	Protected tree		Demo-form-pour walk without damage to tree roots 1" diameter or larger, Fence, Crown Cleaning Prune, Root stimulate
37	8" Live Oak	Protected tree		Demo-form-pour walk without damage to tree roots 1" diameter or larger
38	14" American Elm	Not protected	Private tree	
39	11" Live Oak	Protected tree		Demo-form-pour walk without damage to tree roots 1" diameter or larger, Fence, Crown Cleaning Prune, Root stimulate
40	11" Live Oak	Protected tree		Demo-form-pour walk without damage to tree roots 1" diameter or larger, Fence, Crown Cleaning Prune, Root stimulate
41	16" Live Oak	Protected tree		Demo-form-pour walk without damage to tree roots 1" diameter or larger, Fence, Crown Cleaning Prune, Root stimulate
42	13" Live Oak	Protected tree		Demo-form-pour walk without damage to tree roots 1" diameter or larger, Fence, Crown Cleaning Prune, Root stimulate
43	12" Live Oak	Protected tree		Demo-form-pour walk without damage to tree roots 1" diameter or larger, Fence, Crown Cleaning Prune, Root stimulate
43A	13" Crepe Myrtle	Not protected	Remove for sidewalk	Remove tree, No replacement required
44	15" Live Oak	Protected tree		Demo-form-pour walk without damage to tree roots 1" diameter or larger, Fence, Crown Cleaning Prune, Root stimulate
45	19" Live Oak	Protected tree		Zero curb cutback, Root prune for street, Fence, Clearance prune, Crown Cleaning prune, Root stimulate
46	5" Eastern Redbud	Protected tree	Remove for median narrowing	Remove tree, Provide 5" in replacement plantings
47	2" Eastern Redbud	Protected tree	Remove for median narrowing	Remove tree, Provide 2" in replacement plantings
48	2" Eastern Redbud	Protected tree	Remove for median narrowing	Remove tree, Provide 2" in replacement plantings
49	4" Eastern Redbud	Protected tree	Remove for median narrowing	Remove tree, Provide 4" in replacement plantings
50	5" Eastern Redbud	Protected tree	Remove for median narrowing	Remove tree, Provide 5" in replacement plantings
51	3" Eastern Redbud	Protected tree	Remove for median narrowing	Remove tree, Provide 3" in replacement plantings
52	5" Eastern Redbud	Protected tree	Remove for median narrowing	Remove tree, Provide 5" in replacement plantings
53	4" Eastern Redbud	Protected tree	Remove for median narrowing	Remove tree, Provide 4" in replacement plantings
54	5" Eastern Redbud	Protected tree	Remove for median narrowing	Remove tree, Provide 5" in replacement plantings
55	11" Live Oak	Protected tree		Demo-form-pour walk without damage to tree roots 1" diameter or larger, Fence, Crown Cleaning Prune, Root stimulate
56	10" Live Oak	Protected tree		Demo-form-pour walk without damage to tree roots 1" diameter or larger, Fence, Crown Cleaning Prune, Root stimulate
57	12" Live Oak	Protected tree		Demo-form-pour walk without damage to tree roots 1" diameter or larger, Fence, Crown Cleaning Prune, Root stimulate
58	28" Crepe Myrtle	Protected tree		Demo-form-pour walk without damage to tree roots 1" diameter or larger, Fence, Crown Cleaning Prune, Root stimulate
59	4" Live Oak	Protected tree		Demo-form-pour walk without damage to tree roots 1" diameter or larger, Fence, Crown Cleaning Prune, Root stimulate
60	3" Live Oak	Protected tree		Demo-form-pour walk without damage to tree roots 1" diameter or larger, Fence, Crown Cleaning Prune, Root stimulate
61	24" Crepe Myrtle	Protected tree		Demo-form-pour walk without damage to tree roots 1" diameter or larger, Fence, Crown Cleaning Prune, Root stimulate
62	10" Live Oak	Protected tree		Demo-form-pour walk without damage to tree roots 1" diameter or larger, Fence, Crown Cleaning Prune, Root stimulate
63	6" Live Oak	Protected tree		Demo-form-pour walk without damage to tree roots 1" diameter or larger, Fence, Crown Cleaning Prune, Root stimulate
64	18" Crepe Myrtle	Not protected		
65	17" Crepe Myrtle	Not protected		
66	Recently removed			
66A	15" Live Oak	Not protected	Topped by CenterPoint, Private tree	Root prune for sidewalk, Clearance prune
67	Recently removed			
68	9" Cedar Elm	Protected tree	Remove for bus pad	Remove tree, Provide 9" in replacement plantings

**C.N. Koehl**  
 Urban Forestry, Inc.  
 210 Stone Bush Ct. • Katy, Texas 77493  
 281-391-0022 ckoehl@koehlurbanforestry.com  
 APPROVED: *Craig D. Koehl* 12-18-2024

**MONTROSE**  
 TAX INCREMENT REINVESTMENT ZONE 27

**Gauge**  
 ENGINEERING  
 TEXAS PE FIRM REG. # 20017  
 11750 KATY FREEWAY, #400  
 HOUSTON, TX 77079

SURVEYED BY:  
 KUO & ASSOCIATES, INC.

**CITY OF HOUSTON**  
 HOUSTON PUBLIC WORKS

**MONTROSE BOULEVARD**  
 IMPROVEMENTS – SEGMENT 1

**TREE PROTECTION PLAN**

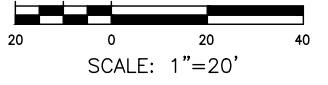
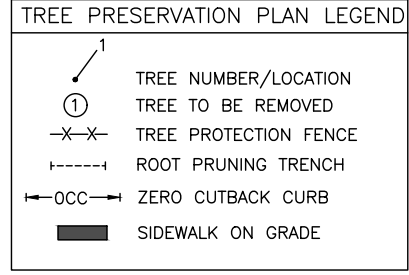
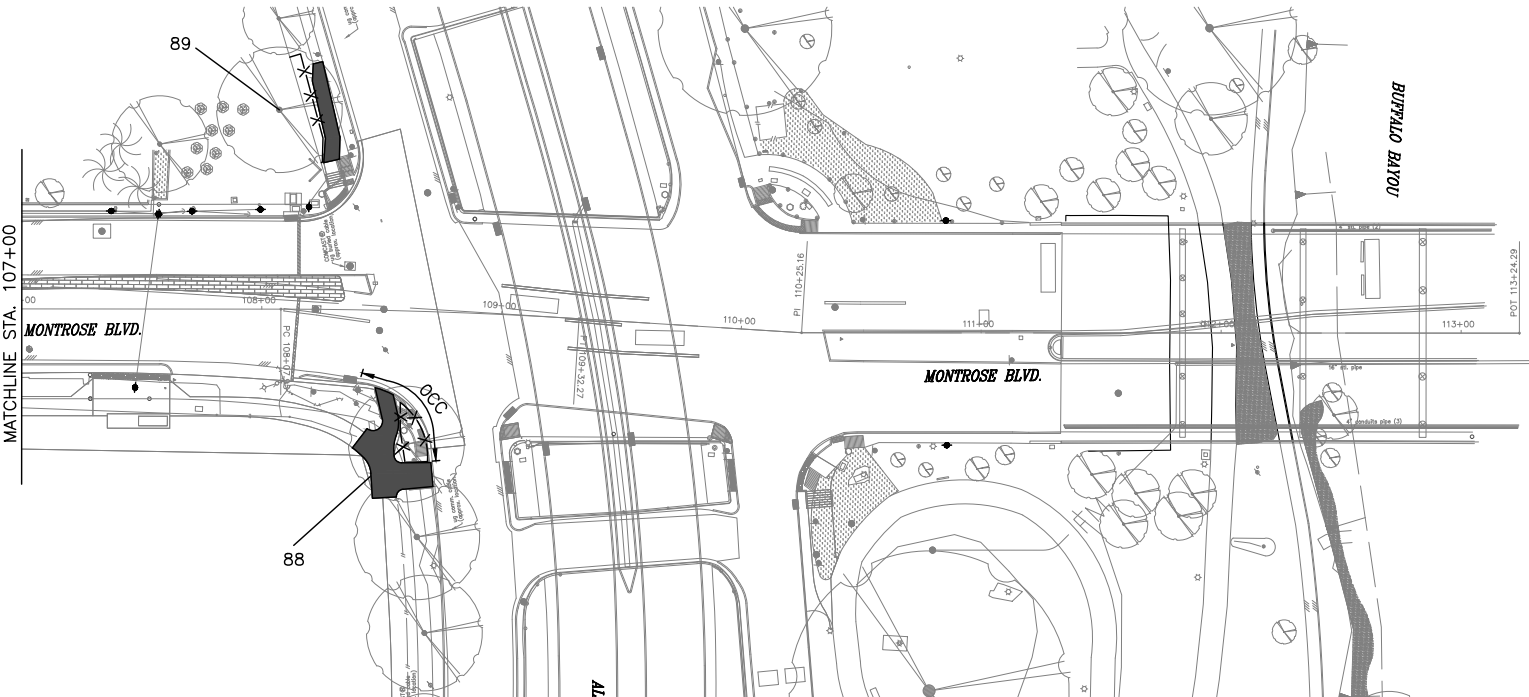
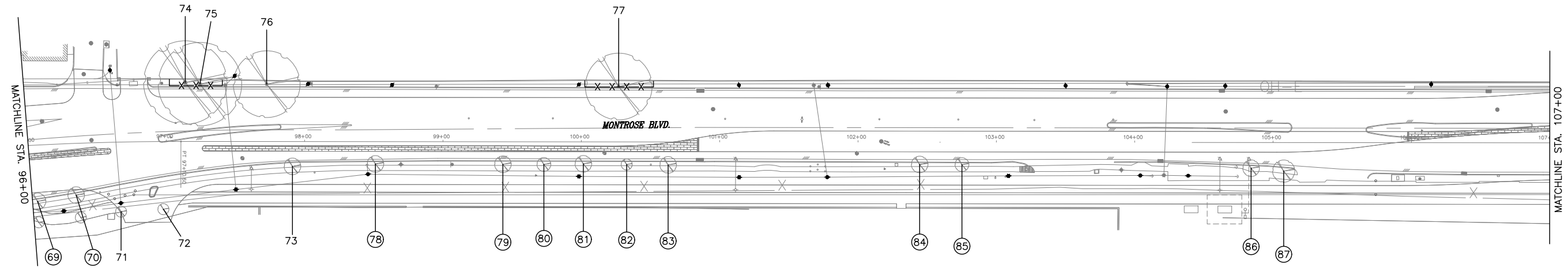
SHEET 1 OF 3

WBS NUMBER: N-T27000-0005-7  
 DRAWING SCALE: AS NOTED  
 CITY OF HOUSTON PM: JUADA HUANG  
 SHEET NO. 302 OF 364

APP.	REVISIONS	DATE	NO.

Plotted on: \$DATE\$ \$TIME\$ \$USER\$

Pen Table: \$PENTBL\$  
Plot Driver: \$PLDRVL\$



**NOTE:**

1. THIS TREE PROTECTION PLAN WAS DEVELOPED WITH INFORMATION PROVIDED BY DESIGN ENGINEER IN DRAWINGS DATED DECEMBER 2024. THE PLAN CONSIDERS ALL FITTINGS, VERTICAL OFFSETS AND AREAS OF NECESSARY EXCAVATION. CHANGES MADE TO DESIGN MAY COMPROMISE THE TREE PROTECTION PLAN. REFER SPECIFICATIONS 01562 AND 02915.
2. CN KOEHL URBAN FORESTRY, INC. HAS NOT BEEN CONTRACTED TO COMPLETE ANY TREE RISK ASSESSMENTS ON THIS PROJECT—THIS TPP INCLUDES PROTECTION MEASURES FOR SPECIES OF TREES PROTECTED BY APPLICABLE ORDINANCE ONLY. CN KOEHL URBAN FORESTRY, INC. DOES NOT GUARANTEE CONDITION OR STRUCTURAL INTEGRITY OF ANY TREE LOCATED ON OR ADJACENT TO THIS PROJECT.
3. IN AREAS WHERE INDIVIDUAL TREES HAVE NOT BEEN TIED IN BY SURVEY, APPROXIMATE LOCATION IS INDICATED ON TPP WITH A DOT AND TREE NUMBER. ACCURACY OF REPRESENTED LOCATION IS NOT GUARANTEED BY CN KOEHL URBAN FORESTRY, INC.
4. THE CONTRACTOR'S ARBORIST WILL MARK LOCATIONS OF TREES TO BE PLANTED AND OBTAIN APPROVAL BY CITY ENGINEER AND CITY FORESTER BEFORE PURCHASING OR EXCAVATING PLANTING HOLE OF EACH TREE.

Tree No.	Description	Chapter 33 Status	Comments	Treatment
69	9" Cedar Elm	Protected tree	Remove for bus pad	Remove tree, Provide 9" in replacement plantings
70	8" Cedar Elm	Protected tree	Remove for sidewalk	Remove tree, Provide 8" in replacement plantings
71	6" Live Oak	Protected tree	50% dieback, Poor, Remove for driveway, Previously permitted for removal with Ismaili Center permit	Remove tree, No replacement required due to existing permit
72	6" Live Oak	Protected tree	Remove for driveway, Previously permitted for removal with Ismaili Center permit	Remove tree, No replacement required due to existing permit
73	8" Cedar Elm	Protected tree	Remove for roadway	Remove tree, Provide 8" in replacement plantings
74	26" Post Oak	Protected tree	Tree failed and removed in Hurricane Beryl	
75	25" Post Oak	Protected tree		Crown Cleaning Prune, Fence, Root stimulate
76	27" Post Oak	Protected tree	Tree removed by City of Houston Forestry	
77	17" Huisache	Protected tree		Fence, Clearance prune
78	8" Cedar Elm	Protected tree	Remove for roadway	Remove tree, Provide 8" in replacement plantings
79	8" Cedar Elm	Protected tree	Remove for roadway	Remove tree, Provide 8" in replacement plantings
80	6" Cedar Elm	Protected tree	Remove for roadway	Remove tree, Provide 6" in replacement plantings
81	8" Cedar Elm	Protected tree	Remove for roadway	Remove tree, Provide 8" in replacement plantings
82	7" Cedar Elm	Protected tree	Remove for roadway	Remove tree, Provide 7" in replacement plantings
83	7" Cedar Elm	Protected tree	Remove for roadway	Remove tree, Provide 7" in replacement plantings
84	6" Cedar Elm	Protected tree	Dead, Remove for roadway	Remove tree, No replacement required due to condition
85	7" Cedar Elm	Protected tree	Remove for roadway	Remove tree, Provide 7" in replacement plantings
86	10" Cedar Elm	Protected tree	Remove for roadway	Remove tree, Provide 10" in replacement plantings
87	9" Cedar Elm	Protected tree	Remove for roadway	Remove tree, Provide 9" in replacement plantings
88	20" Live Oak	Protected tree	Twig dieback, Exploratory excavation in November 2023 revealed no tree root conflicts with proposed north bound wheel chair ramp (CNK, Gauge and COH Forestry attended excavation)	Demo-form-pour walk without damage to tree roots 1" diameter or larger, Zero Curb Cutback, Fence, Crown Cleaning Prune, Root stimulate
89	25" Live Oak	Corridor Tree		Demo-form-pour walk without damage to tree roots 1" diameter or larger, Fence, Clearance prune

**C.N. Koehl**  
Urban Forestry, Inc.  
210 Stone Bush Ct. • Katy, Texas 77493  
281-391-0022 ckoehl@koehlurbanforestry.com  
APPROVED: *Craig N. Koehl* 12-18-2024

**MONTROSE**  
TAX INCREMENT REINVESTMENT ZONE 27

**Gauge**  
ENGINEERING  
TEXAS PE FIRM REG. # 20017  
11750 KATY FREEWAY, #400  
HOUSTON, TX 77079

SURVEYED BY:  
KYO & ASSOCIATES, INC.

**CITY OF HOUSTON**  
HOUSTON PUBLIC WORKS

MONTROSE BOULEVARD  
IMPROVEMENTS – SEGMENT 1  
TREE PROTECTION PLAN

SHEET 2 OF 3

WBS NUMBER	FOR CITY OF HOUSTON USE ONLY
N-T27000-0005-7	
DRAWING SCALE	
AS NOTED	
CITY OF HOUSTON PM	
JADA HUANG	
SHEET NO. 303 OF 364	

NO.	DATE	REVISIONS	APP.