



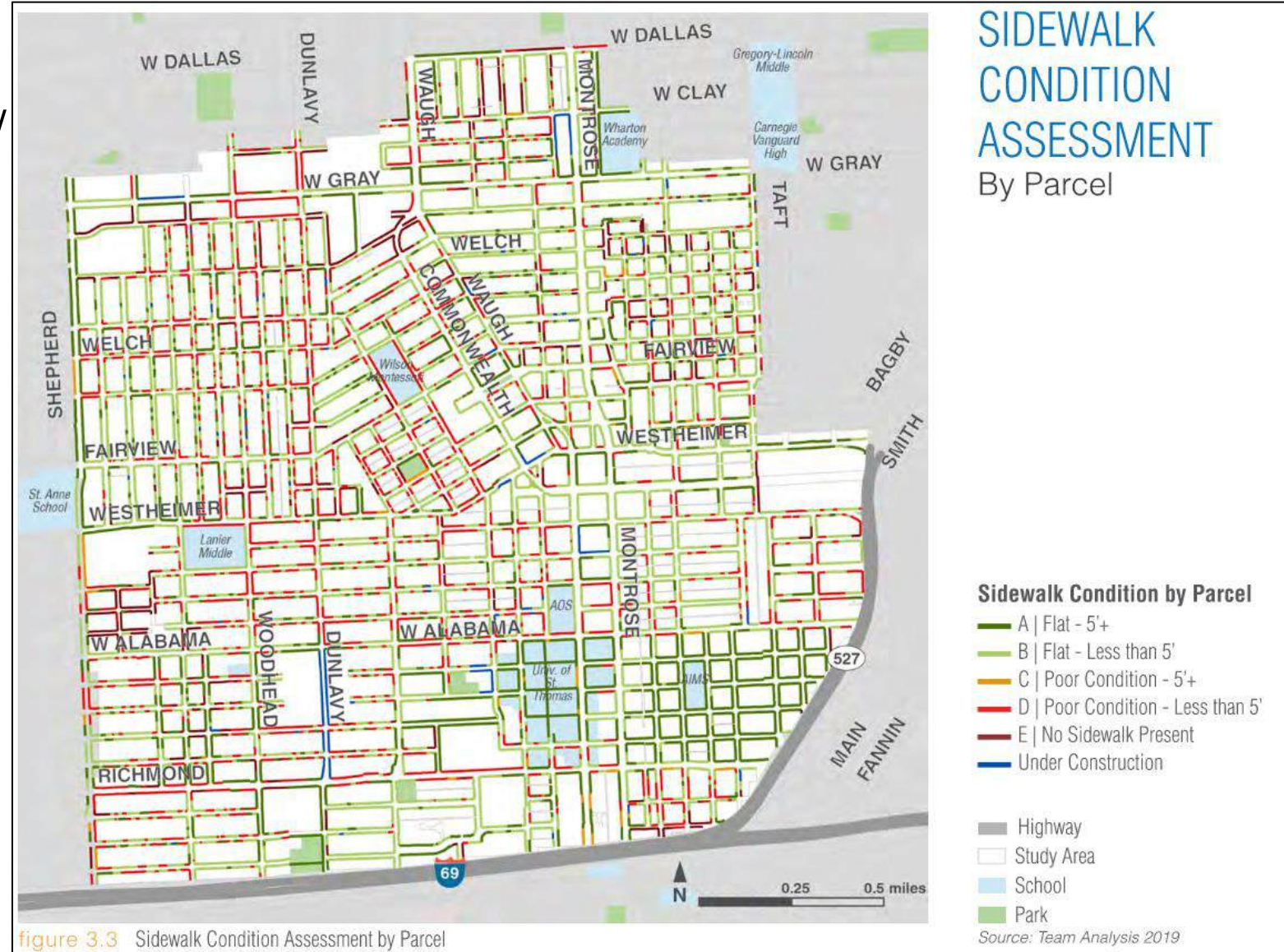
MONTROSE SAFE ROUTES TO SCHOOL CONNECTIONS

September 2025



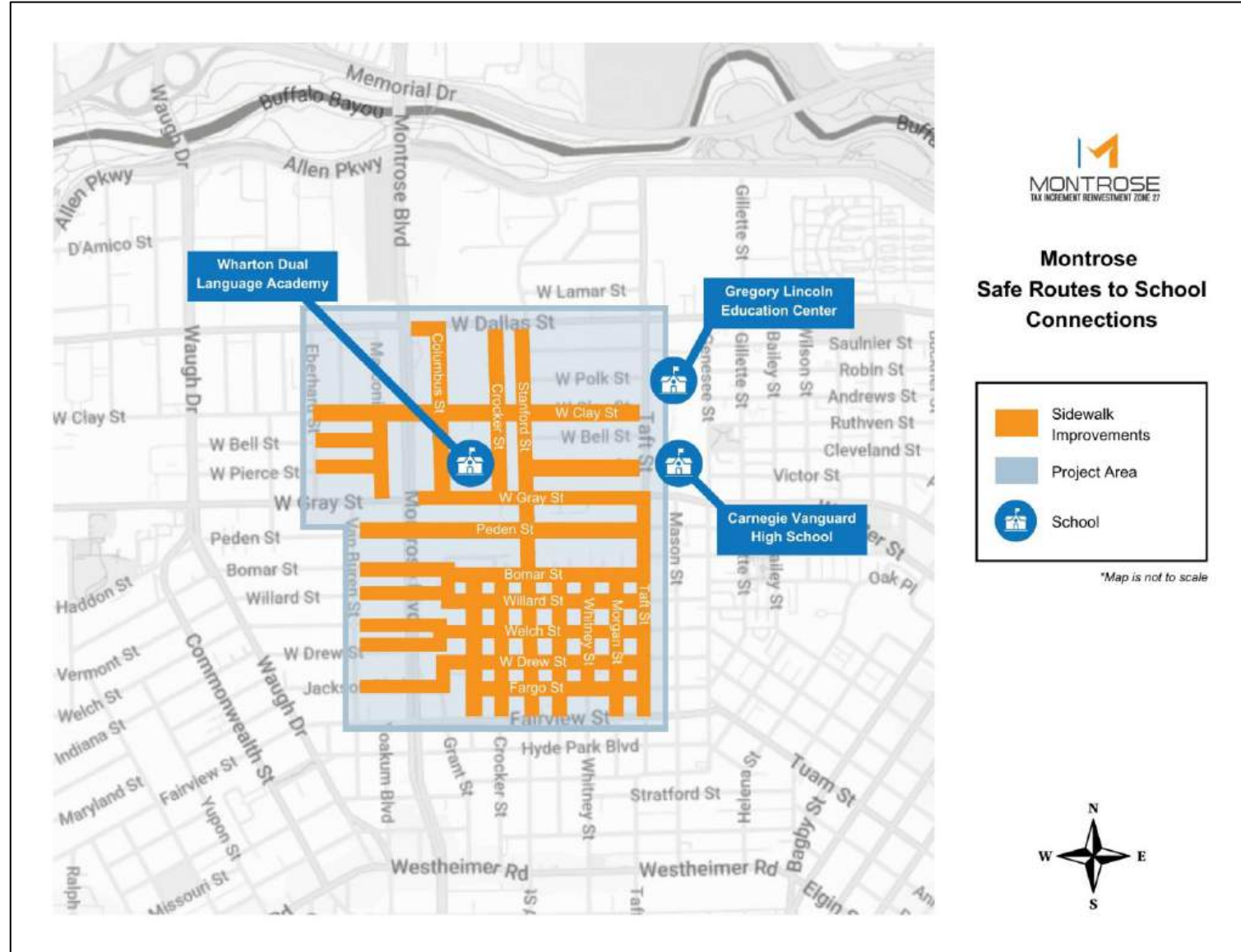
BACKGROUND

- Sidewalk condition assessment – 2020 study
- Fair to poor condition sidewalks cause walkability challenges.
- Since study, the MRA has received federal funds through HGAC and METRO grants.
- MRA has completed multiple sidewalk projects.
- \$9.4 M was secured around 3 schools.



PURPOSE OF THE MEETING

- Last presentation was September 2024.
- Present current information about project.
- montrosehtx.org/project/srts
- Receive feedback from community.
- Advance design considering feedback.
- Presentation will be uploaded to website.



MONTROSE SAFE ROUTES TO SCHOOL CONNECTIONS



TYPE

FULL SIDEWALK RECONSTRUCTION
9.1 miles



COST ESTIMATE

~ \$9.4 MILLION

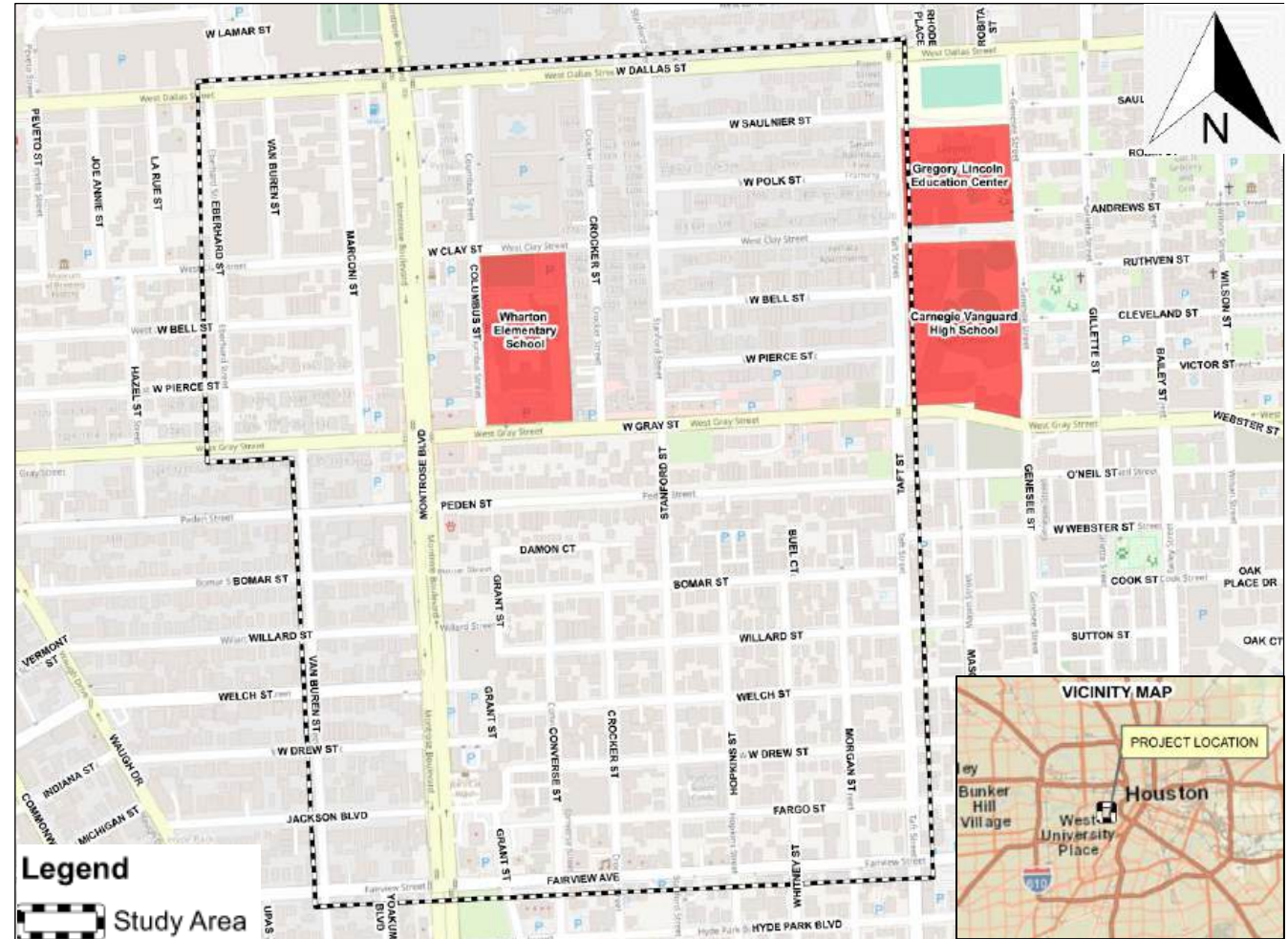
FUNDING SOURCES

FEDERAL FUNDS (\$9.4M)
MRA (DESIGN AND CONSTRUCTION MGMT)



PHASE

DESIGN

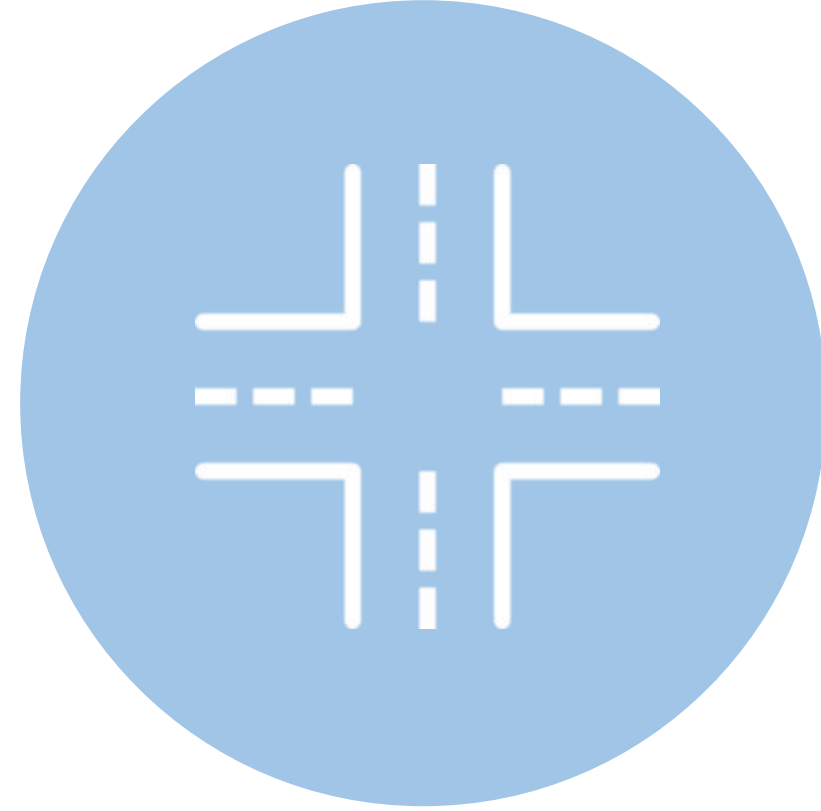


PROJECT OBJECTIVES

Proposed conditions will achieve the following



Enhance Safety and Improve
Walking Routes to Schools



Improve Intersection Safety

PROJECT SCOPE



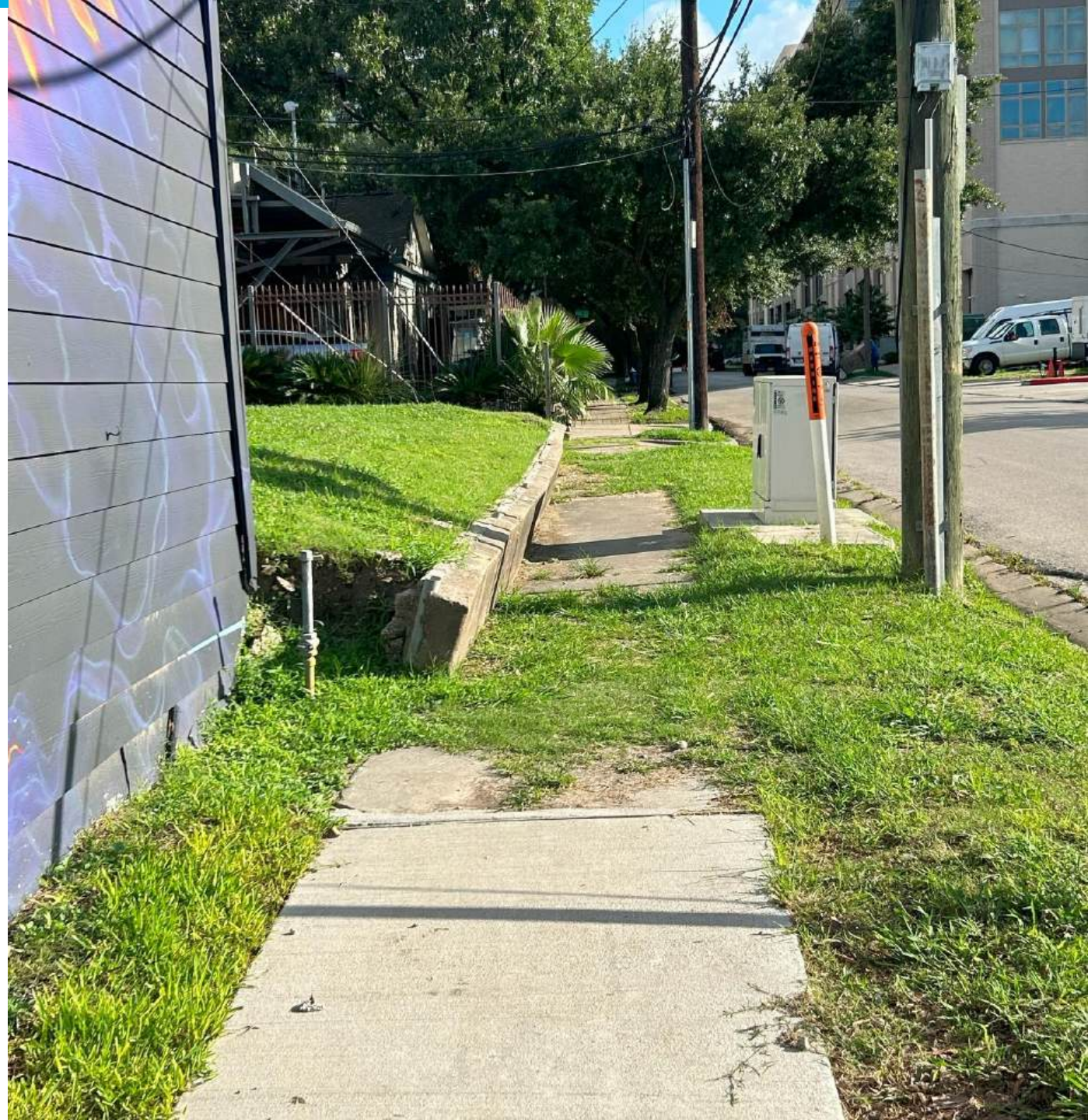
Improve Pedestrian Realm



Upgrade Intersection Safety



Tree Protection & Preservation



EXISTING CONDITIONS



EXISTING CONDITIONS KEY TAKEAWAYS

Sidewalks and Ramps

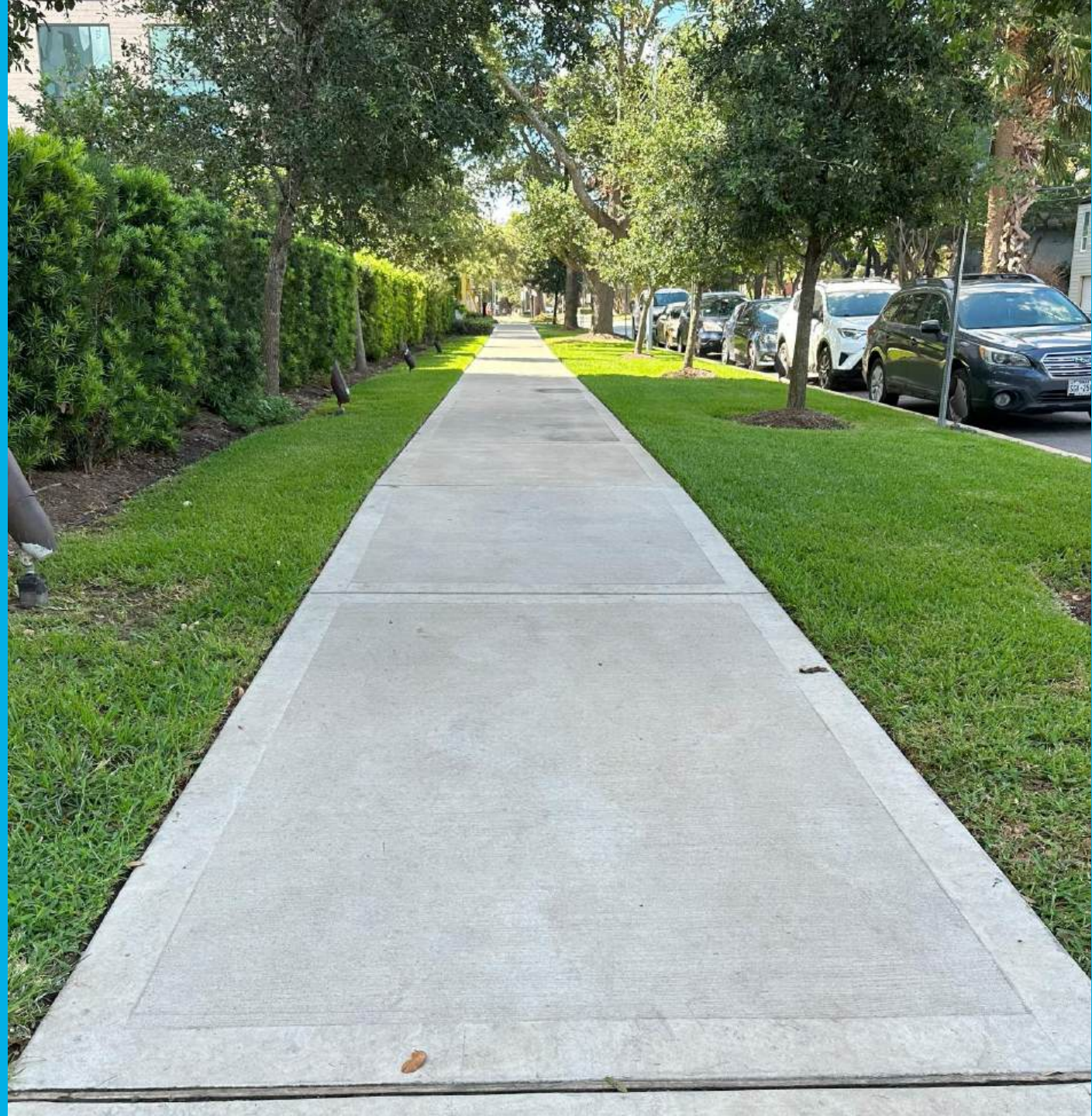
- Fair to poor condition
- Challenging to traverse.
 - Settled over time - tripping hazards
- Many wheelchair ramps are not ADA-compliant.
- Narrower than the City minimum of 5-ft.

Intersections

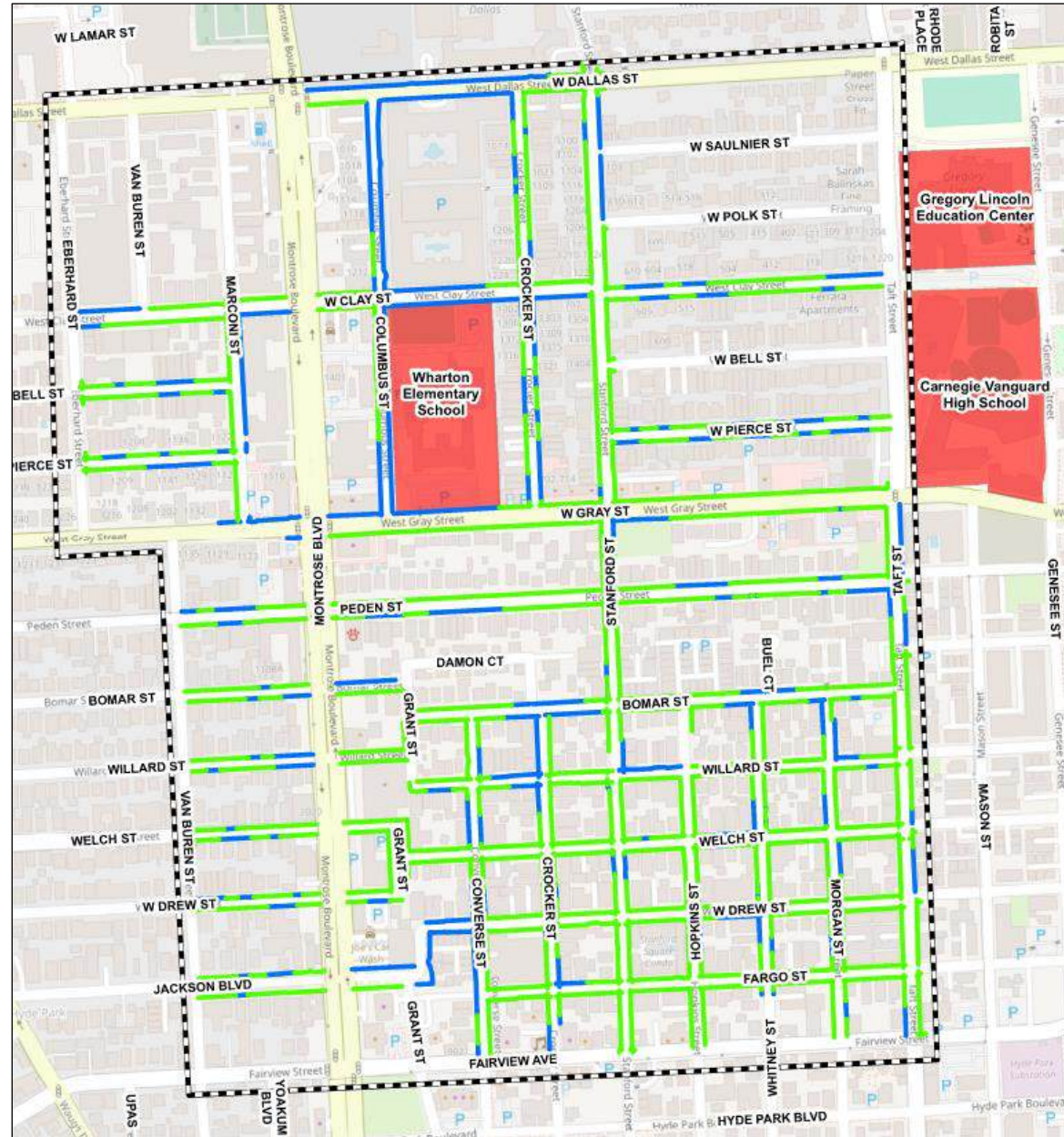
- Stanford St / W Gray St
 - High volume of pedestrians crossing
 - Crossing guard indicates need for controlled crossing
- Stanford St / W Dallas St
 - Crosswalk across W Dallas St does not meet City standards for pedestrian level-of-service
- Stanford St at Bomar St
 - Pedestrian visibility obstructions
- Various intersections have accessibility challenges



PROPOSED CONDITIONS



PROPOSED SIDEWALK IMPROVEMENTS

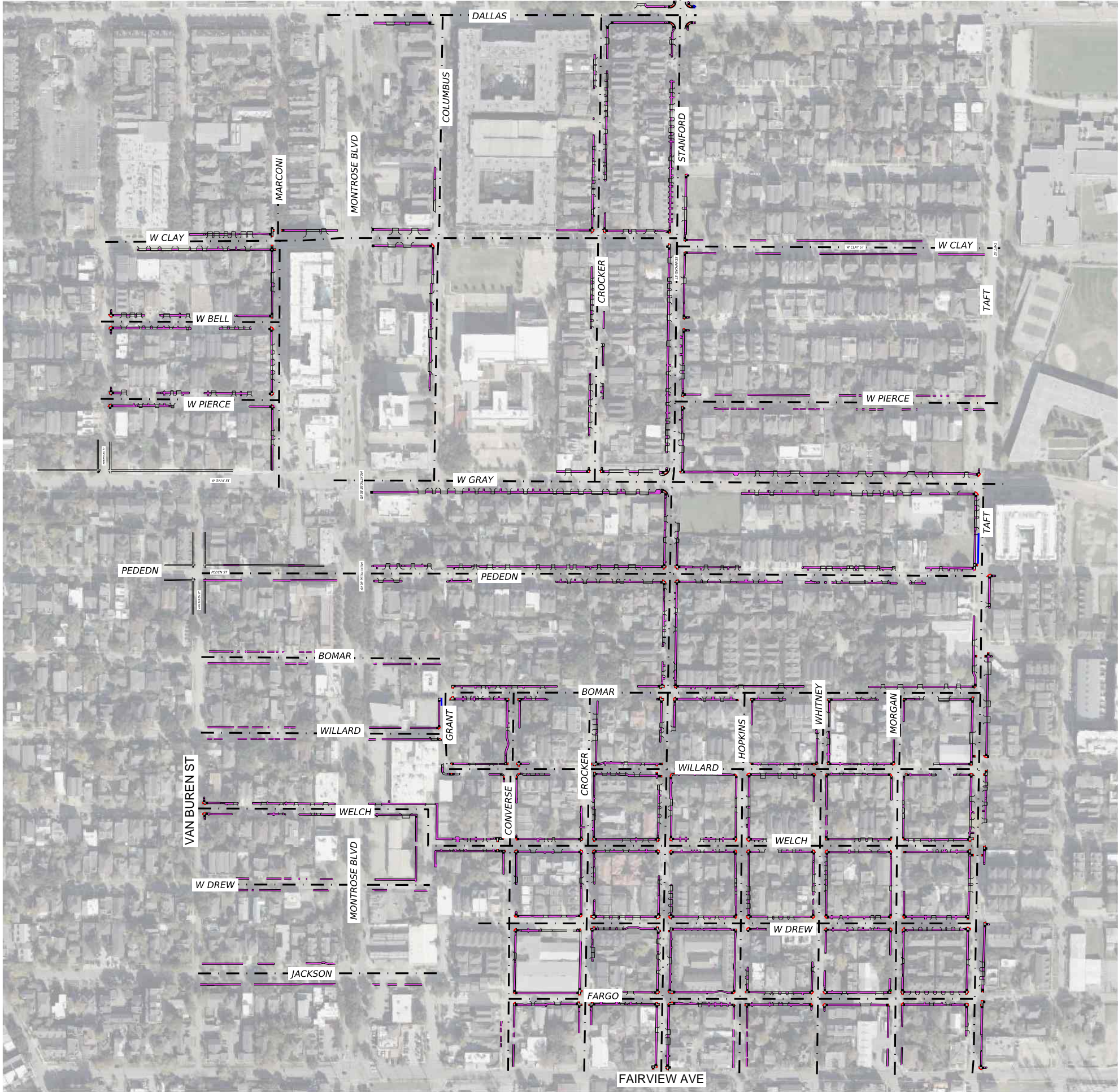



Legend

- Existing Sidewalk to Remain (5-ft minimum)
- Proposed 5 to 6-ft Sidewalk
- Schools
- TIRZ 27


Improvements:

- 9.1 miles of sidewalk replacement
- Pedestrian ramps





MONTROSE
TAX INCREMENT REINVESTMENT ZONE 27

PREPARED BY:


11750 KATY FREEWAY
SUITE 400
HOUSTON, TX 77079
(713) 965-9996
(713) 965-0044 FAX
HRGreen.com
Firm No. F-11278

Not to be used for construction, bidding, permit or regulatory approval purposes. This document is released for the purpose of North review under the authority of:
DAVID G. CREANEY
125563
9/9/2025
60% SUBMITTAL
GAUGE ENGINEERING
Texas Registered Engineering Firm F-20017

SURVEYED BY:
RODS SURVEYING, INC.

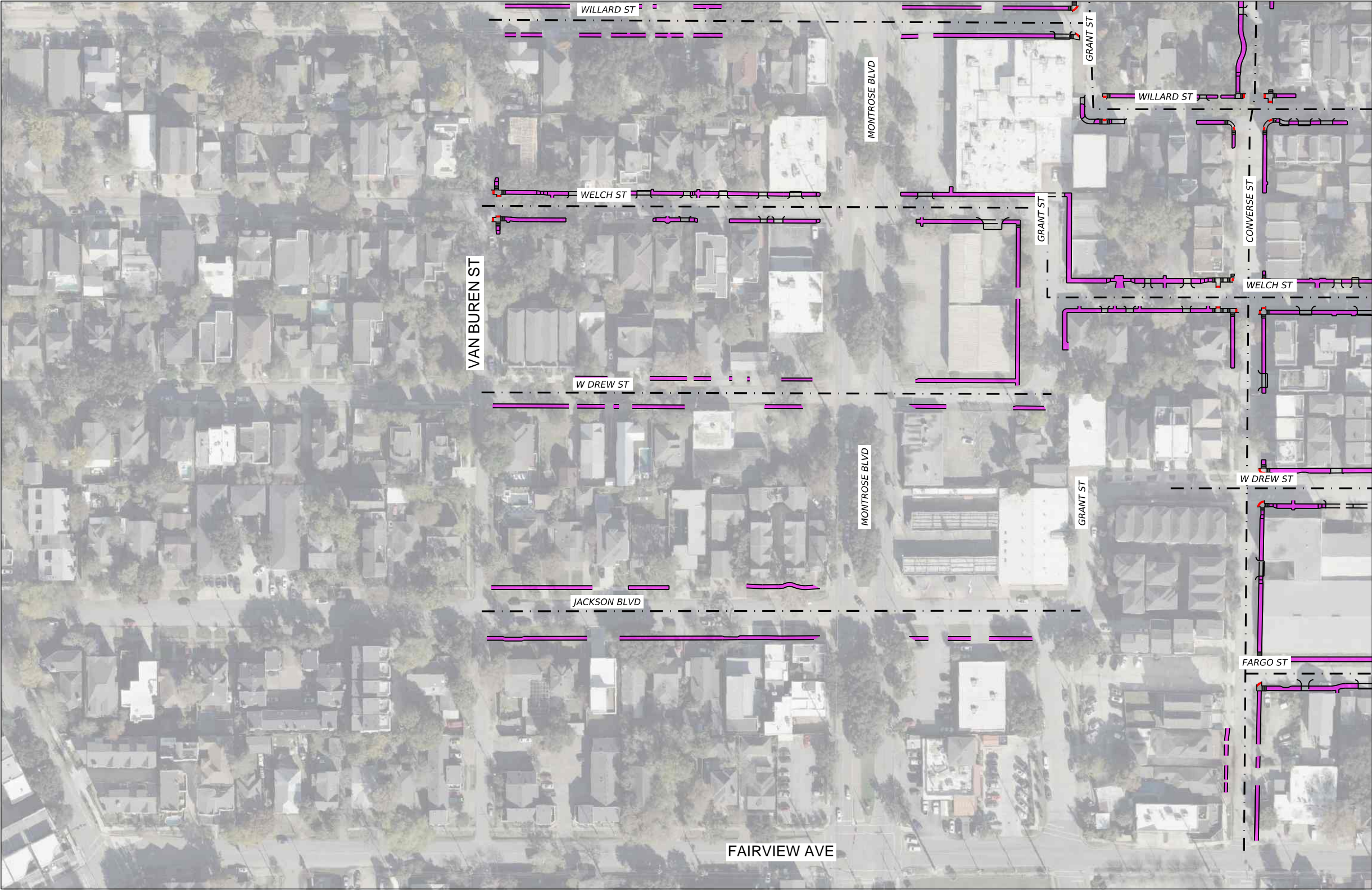
CITY OF HOUSTON
HOUSTON PUBLIC WORKS


MONTROSE SAFE ROUTES
TO SCHOOL CONNECTIONS


PROJECT LAYOUT

SHEET 1 OF 7

WBS NUMBER	FOR CITY OF HOUSTON USE ONLY
N-T27000-0012-7	
DRAWING SCALE	
AS NOTED	
CITY OF HOUSTON PM	
JIADA HUANG	
SHEET NO.	OF





PREPARED BY:

11750 KATY FREEWAY
SUITE 400
HOUSTON, TX 77079
(713) 965-9996
(713) 965-0044 FAX
HRGreen.com
Firm No. F-11278

Not to be used for construction, bidding, permit or regulatory approval purposes. This document is released for the purpose of public review under the authority of:

DAVID G. CLEANEY
125563
9/9/2025

60% SUBMITTAL
GAUGE ENGINEERING
Texas Registered Engineering Firm F-20017

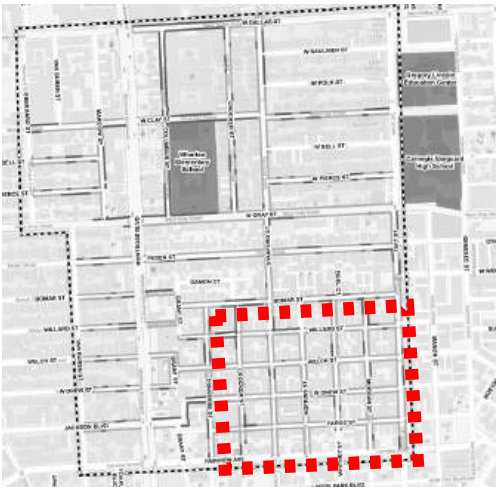
CITY OF HOUSTON
HOUSTON PUBLIC WORKS

**MONTROSE SAFE ROUTES
TO SCHOOL CONNECTIONS**


PROJECT LAYOUT

SHEET 2 OF 7

WBS NUMBER	FOR CITY OF HOUSTON USE ONLY
N-T27000-0012-7	
DRAWING SCALE	
AS NOTED	
CITY OF HOUSTON PM	
JIADA HUANG	
SHEET NO.	OF





PREPARED BY:

11750 KATY FREEWAY
SUITE 400
HOUSTON, TX 77079
(713) 965-9996
(713) 965-0044 FAX
HRGreen.com
Firm No. F-11278

Not to be used for construction, bidding, permit or regulatory approval purposes. This document is released for the purpose of public review under the authority of:
DAVID G. CLEANEY
125563
9/9/2025
60% SUBMITTAL
GAUGE ENGINEERING
Texas Registered Engineering Firm F-20117


CITY OF HOUSTON
HOUSTON PUBLIC WORKS

MONTROSE SAFE ROUTES
TO SCHOOL CONNECTIONS
PROJECT LAYOUT

SHEET 3 OF 7	
WBS NUMBER	FOR CITY OF HOUSTON USE ONLY
N-T27000-0012-7	
DRAWING SCALE	
AS NOTED	
CITY OF HOUSTON PM	
JIADA HUANG	
SHEET NO.	OF





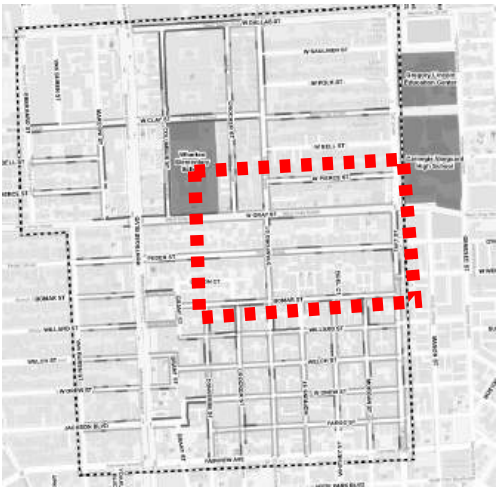
PREPARED BY:

11750 KATY FREEWAY
SUITE 400
HOUSTON, TX 77079
(713) 965-9996
(713) 965-0044 FAX
HRGreen.com
Firm No. F-11278

Not to be used for construction, bidding, permit or regulatory approval purposes. This document is released for the purpose of public review under the authority of:
DAVID G. CLEANEY
125563
9/9/2025
60% SUBMITTAL
GAUGE ENGINEERING
Texas Registered Engineering Firm F-20117

CITY OF HOUSTON
HOUSTON PUBLIC WORKS


MONTROSE SAFE ROUTES
TO SCHOOL CONNECTIONS
PROJECT LAYOUT

SHEET 4 OF 7	
WBS NUMBER	FOR CITY OF HOUSTON USE ONLY
N-T27000-0012-7	
DRAWING SCALE	
AS NOTED	
CITY OF HOUSTON PM	
JIADA HUANG	
SHEET NO.	OF





MONTROSE
TAX INCREMENT REINVESTMENT ZONE 27

PREPARED BY:

HRGreen

11750 KATY FREEWAY
SUITE 400
HOUSTON, TX 77079
(713) 965-9996
(713) 965-0044 FAX
HRGreen.com
Firm No. F-11278

Not to be used for construction, bidding,
permit or regulatory approval purposes. This
document is released for the purpose of
internal review under the authority of:

DAVID G. CLEANEY
125563
9/9/2025

SURVEYED BY:
RODS SURVEYING, INC.

60% SUBMITTAL
GAUGE ENGINEERING
Texas Registered Engineering Firm F-20017

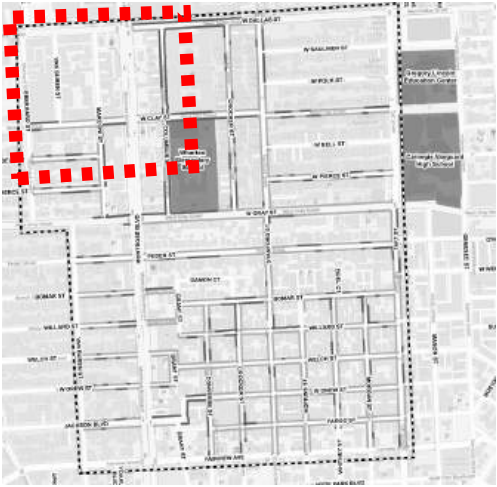
CITY OF HOUSTON


HOUSTON PUBLIC WORKS


MONTROSE SAFE ROUTES
TO SCHOOL CONNECTIONS

PROJECT LAYOUT

SHEET 5 OF 7	
WBS NUMBER	FOR CITY OF HOUSTON USE ONLY
N-T27000-0012-7	
DRAWING SCALE	
AS NOTED	
CITY OF HOUSTON PM	
JIADA HUANG	
SHEET NO.	OF





PREPARED BY:
**HRGreen**
11750 KATY FREEWAY
SUITE 400
HOUSTON, TX 77079
(713) 965-9996
(713) 965-0044 FAX
HRGreen.com
Firm No. F-11278

Not to be used for construction, bidding, permit or regulatory approval purposes. This document is released for the purpose of public review under the authority of:
DAVID G. CLEANEY
125563
9/9/2025
60% SUBMITTAL
GAUGE ENGINEERING
Texas Registered Engineering Firm F-20017

CITY OF HOUSTON
HOUSTON PUBLIC WORKS

**MONTROSE SAFE ROUTES
TO SCHOOL CONNECTIONS**

PROJECT LAYOUT

SHEET 6 OF 7

WBS NUMBER
N-T27000-0012-7

DRAWING SCALE
AS NOTED


CITY OF HOUSTON PM
JIADA HUANG

SHEET NO. OF

FOR CITY OF HOUSTON USE ONLY





PREPARED BY:

11750 KATY FREEWAY
SUITE 400
HOUSTON, TX 77079
(713) 965-9996
(713) 965-0044 FAX
HRGreen.com
Firm No. F-11278

Not to be used for construction, bidding, permit or regulatory approval purposes. This document is released for the purpose of public review under the authority of:
DAVID G. CLEANEY
125563
9/9/2025
60% SUBMITTAL
GAUGE ENGINEERING
Texas Registered Engineering Firm F-20017

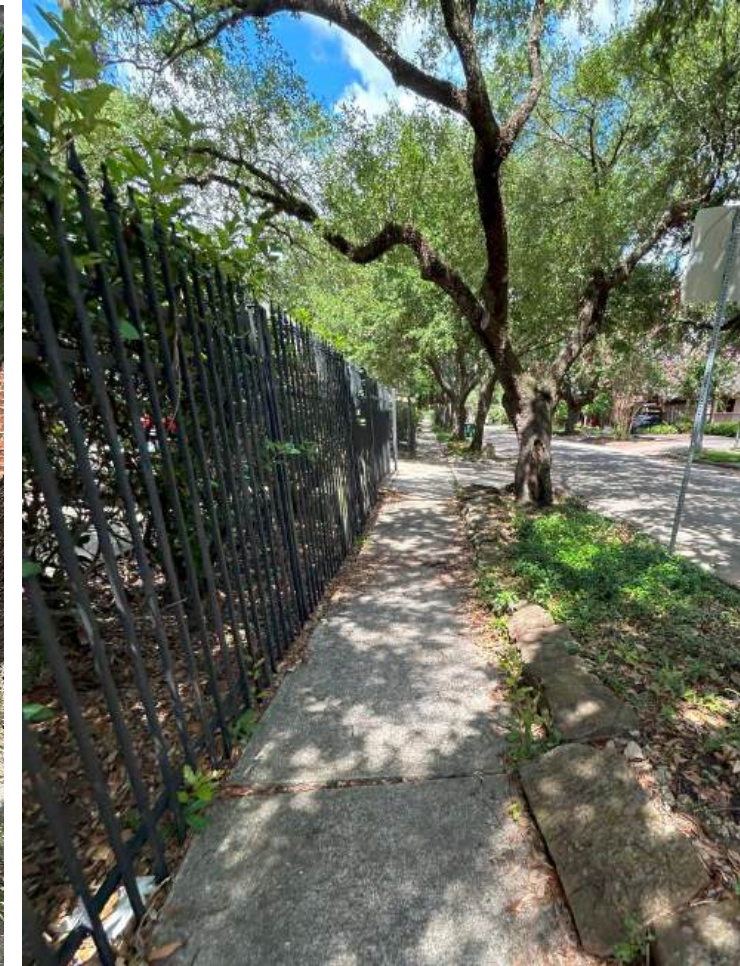
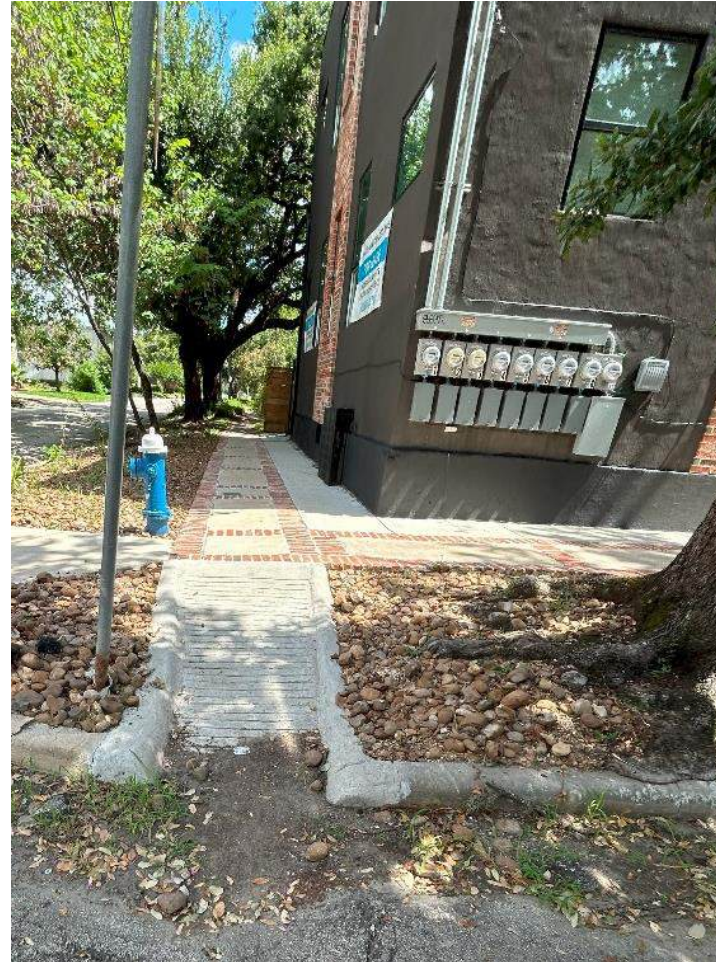
CITY OF HOUSTON
HOUSTON PUBLIC WORKS

MONTROSE SAFE ROUTES
TO SCHOOL CONNECTIONS
PROJECT LAYOUT

SHEET 7 OF 7	
WBS NUMBER	FOR CITY OF HOUSTON USE ONLY
N-T27000-0012-7	
DRAWING SCALE	
AS NOTED	
CITY OF HOUSTON PM	
JIADA HUANG	
SHEET NO.	OF

IMPROVEMENTS IN FRONT OF RESIDENCES

- Replace sidewalks with new 5 to 6-ft sidewalks
- Replace driveways with ADA compliant driveways
 - Coordinate in advance
 - High-Early Strength Concrete
- Preserve fences and landscaping where possible.
 - Coordinate in advance if to be relocated
- Provide individualized tree protection
- Replace intersection ramps
- Letters will be mailed by early 2026.
 - Any changes to the timing will be posted on the montrosehtx.org



INTERSECTION/CROSSING RECOMMENDATIONS

- **2 Pedestrian (HAWK) Signals**

- Stanford St / W Gray St
- Stanford St / W Dallas St

- **16 High-Visibility Crosswalks**

- Includes Pedestrian Crossing Signs – Crocker St at W Clay St

- **1 Level C Crosswalks**

- Crossing Pavement Markings
- Advanced Warning Signage
- Additional Pavement Markings

- **1 Sight Distance Obstruction Removal**

- High Historical Intersection Crash Rate
- Crepe Myrtle Removal

- **5 Intersection Accessibility Enhancements**

- Mill and Overlay Asphalt



INTERSECTION/CROSSING RECOMMENDATIONS

- **2 Pedestrian (HAWK) Signals**

- Stanford St / W Gray St
- Stanford St / W Dallas St

- **16 High-Visibility Crosswalks**

- Includes Pedestrian Crossing Signs – Crocker St at W Clay St

- **1 Level C Crosswalks**

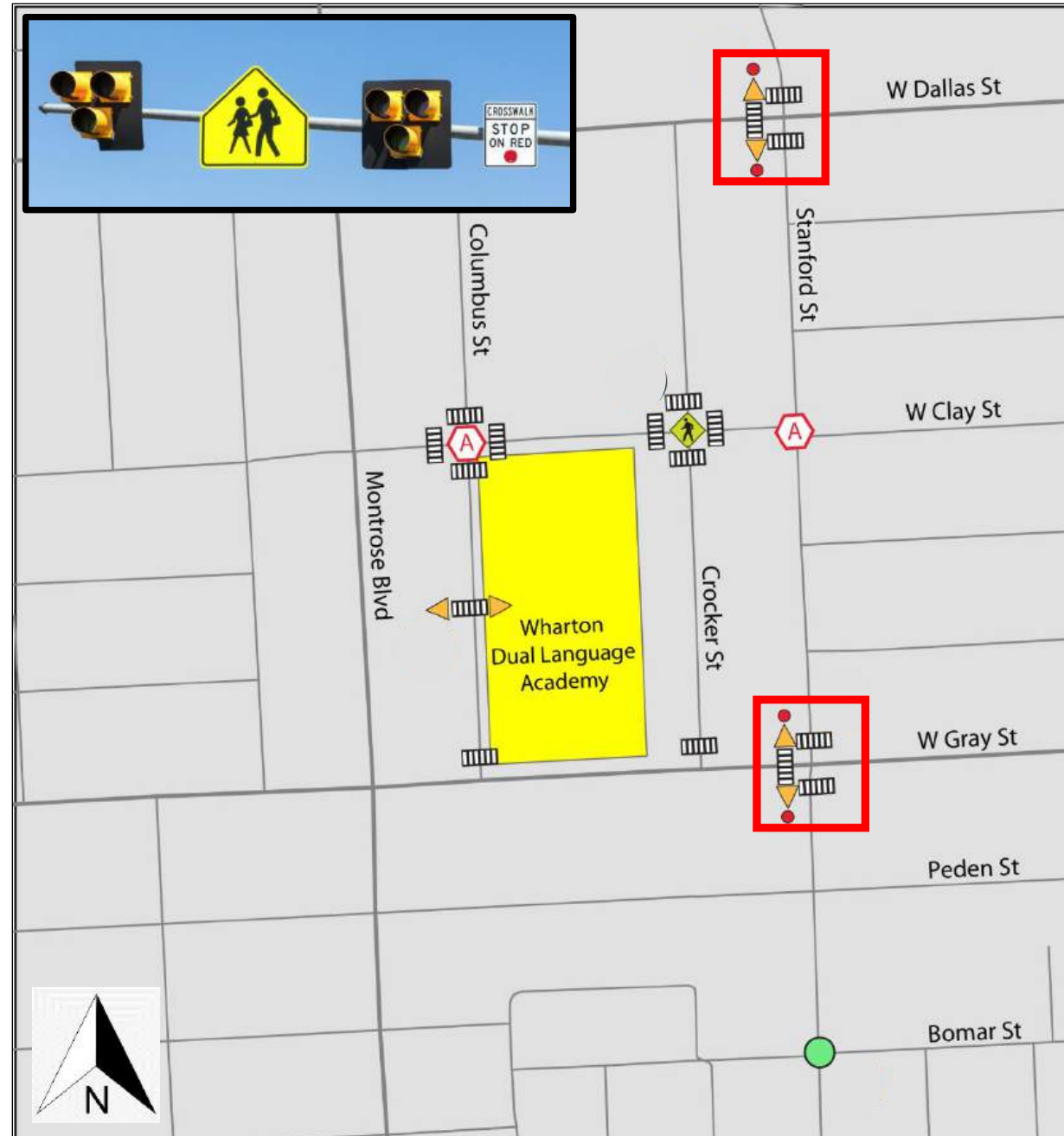
- Crossing Pavement Markings
- Advanced Warning Signage
- Additional Pavement Markings

- **1 Sight Distance Obstruction Removal**

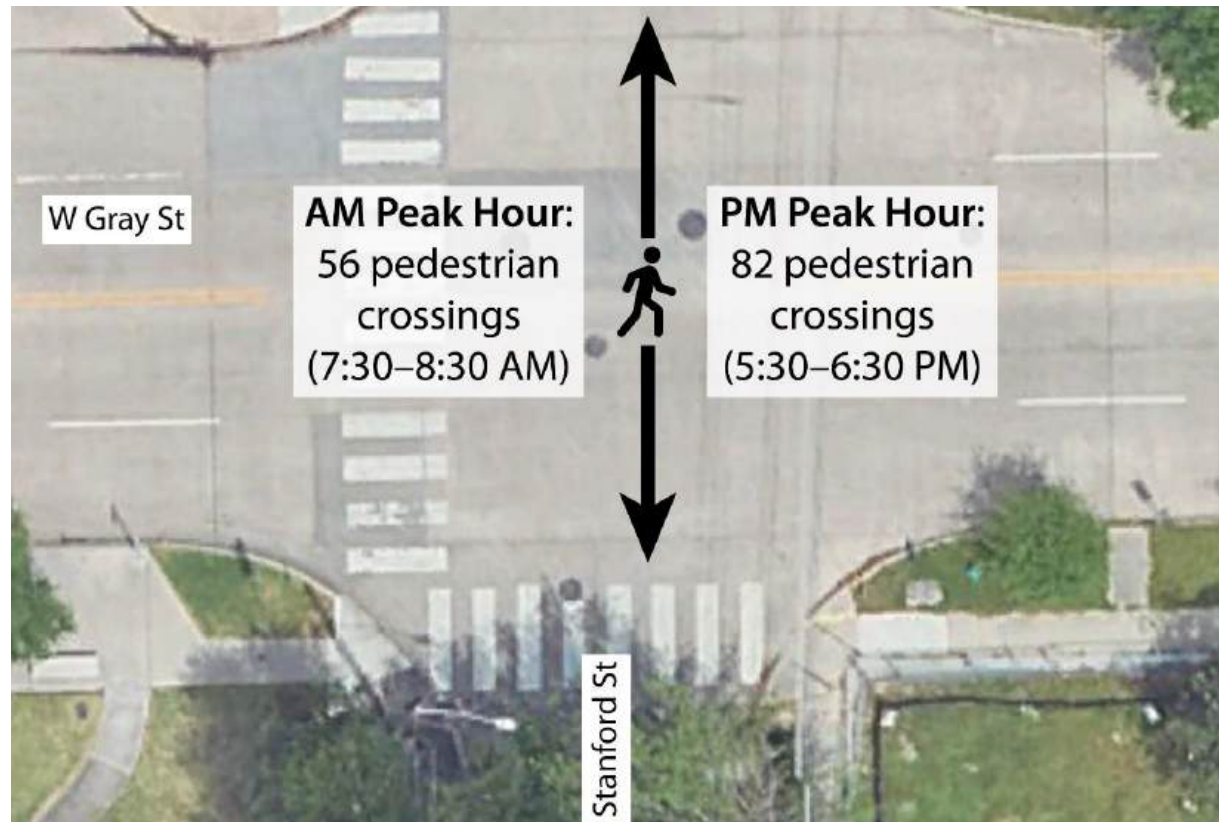
- High Historical Intersection Crash Rate
- Crepe Myrtle Removal

- **5 Intersection Accessibility Enhancements**

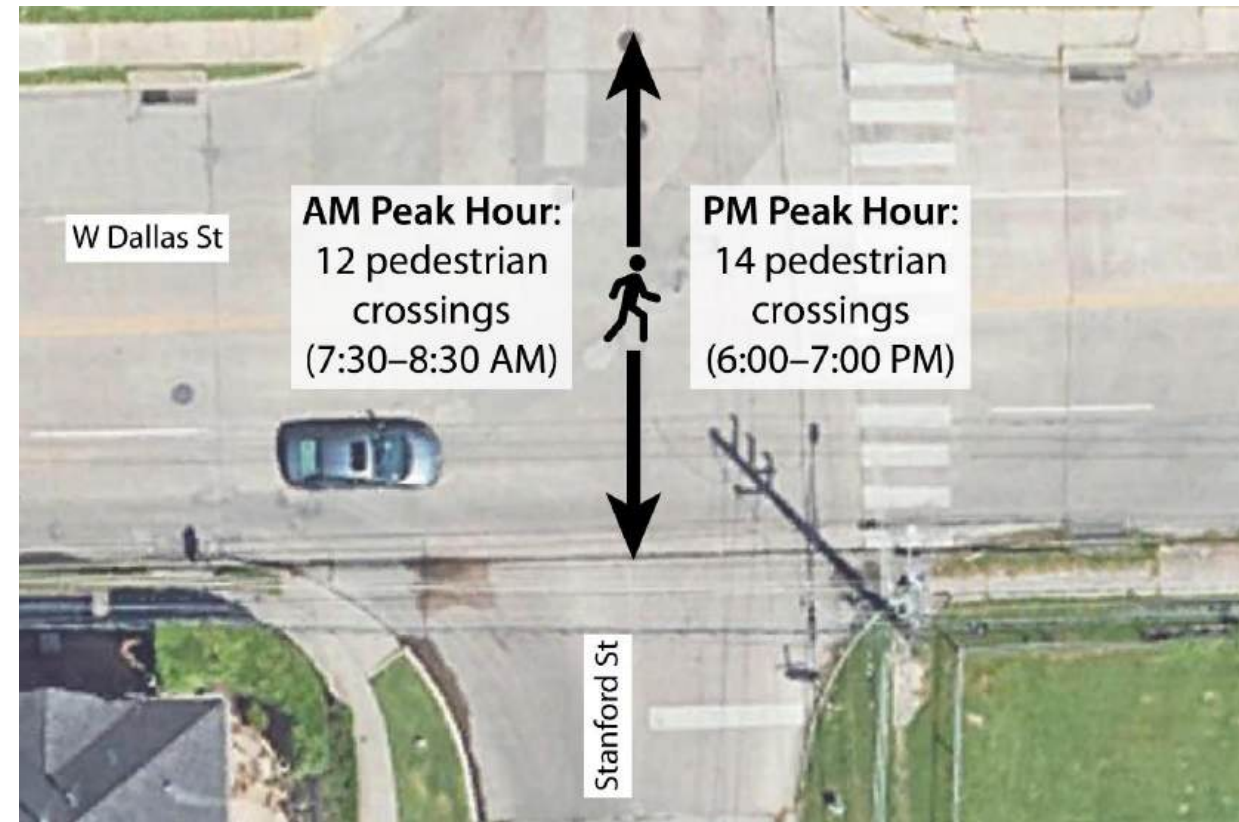
- Mill and Overlay Asphalt



PEDESTRIAN CROSSING VOLUMES



Stanford at W Gray



Stanford at W Dallas

EXISTING PEDESTRIAN CROSSINGS



Stanford at W Gray

PROPOSED CONDITIONS OF HAWK SIGNAL

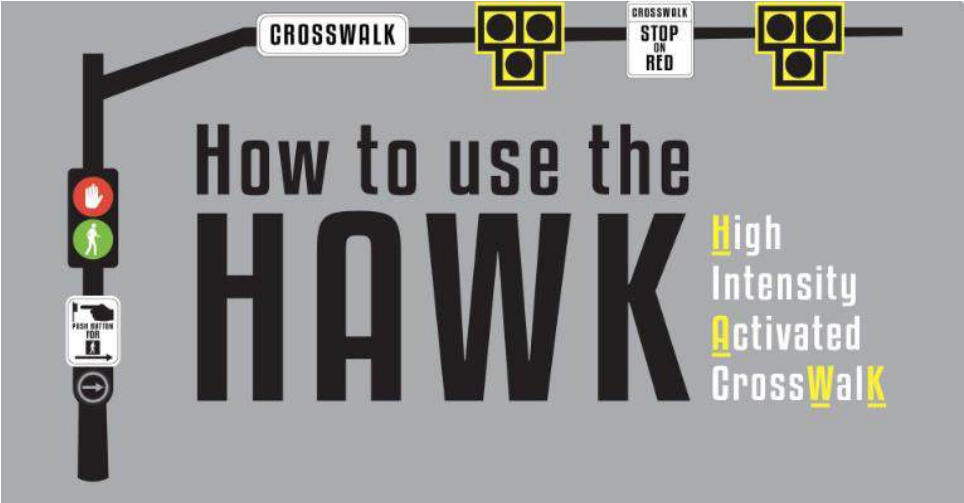
- **Other Pedestrian (HAWK) Signals**

- Montrose Blvd mid-block between Berthea St and Bartlett St
- Montrose Blvd and W Clay St (not constructed yet)



HAWK Signal at Stanford at W Gray

HAWK SIGNAL



PEDESTRIANS

SEE THIS	DO THIS
	PUSH THE BUTTON
	STOP & WAIT for the WALK signal.
	START CROSSING Always watch for cars.
	FINISH CROSSING

DRIVERS

	DRIVE Always look for people who plan to cross.
	SLOW DOWN A person has activated the push button.
	PREPARE TO STOP
	STOP for pedestrian. (As with any signal RED means STOP)
	STOP FIRST Proceed with caution if no people are present.



INTERSECTION/CROSSING RECOMMENDATIONS

- **2 Pedestrian (HAWK) Signals**

- Stanford St / W Gray St
- Stanford St / W Dallas St

- **16 High-Visibility Crosswalks**

- Includes Pedestrian Crossing Signs – Crocker St at W Clay St

- **1 Level C Crosswalks**

- High-Visibility Pavement Markings
- Advanced Warning Signage
- Additional Pavement Markings

- **1 Sight Distance Obstruction Removal**

- High Historical Intersection Crash Rate
- Crepe Myrtle Removal

- **5 Intersection Accessibility Enhancements**

- Mill and Overlay Asphalt



INTERSECTION/CROSSING RECOMMENDATIONS

- **2 Pedestrian (HAWK) Signals**

- Stanford St / W Gray St
- Stanford St / W Dallas St

- **16 High-Visibility Crosswalks**

- Includes Pedestrian Crossing Signs – Crocker St at W Clay St

- **1 Level C Crosswalks**

- High-Visibility Pavement Markings
- Advanced Warning Signage
- Additional Pavement Markings

- **1 Sight Distance Obstruction Removal**

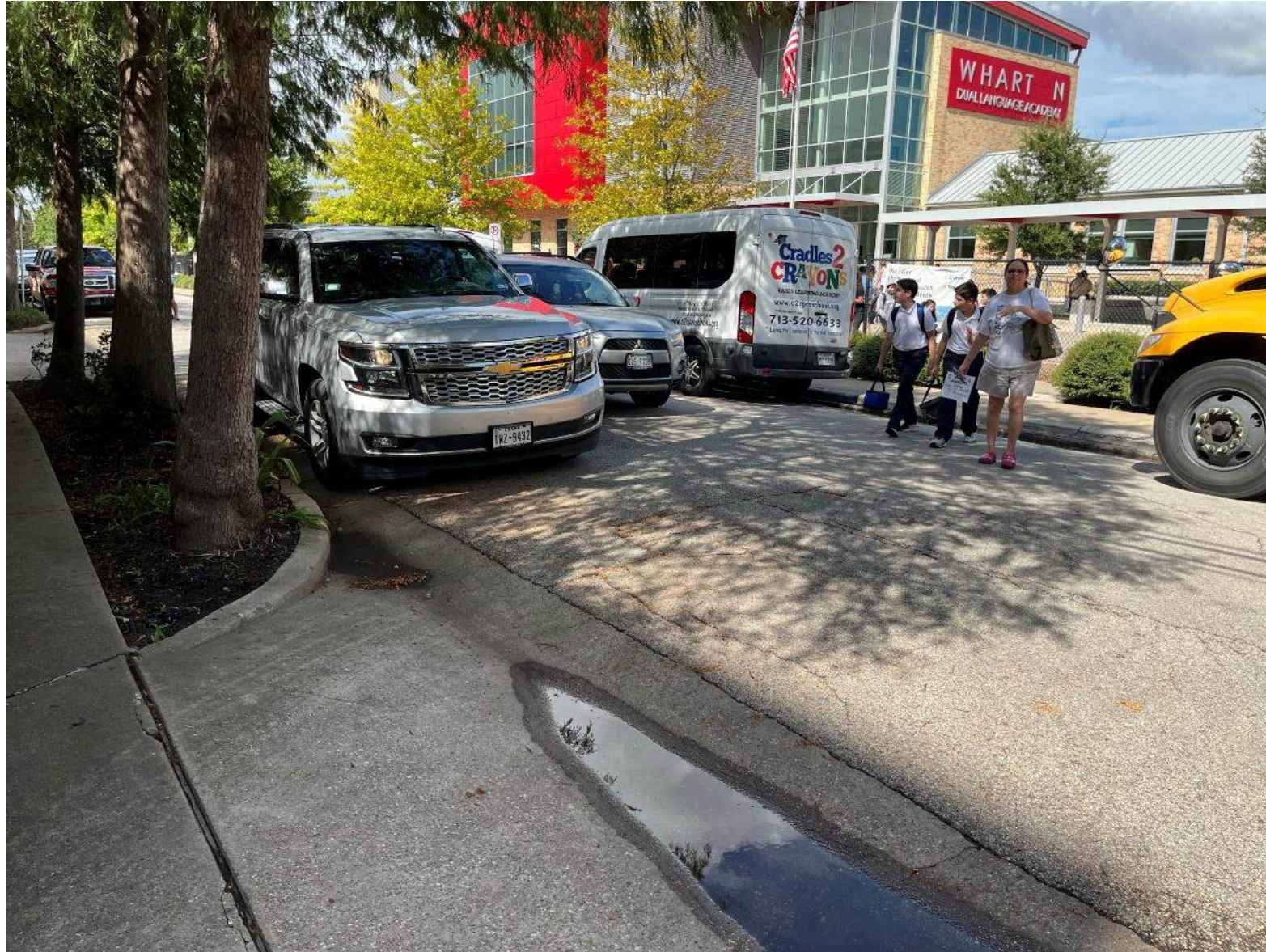
- High Historical Intersection Crash Rate
- Crepe Myrtle Removal

- **5 Intersection Accessibility Enhancements**

- Mill and Overlay Asphalt



EXISTING PEDESTRIAN CROSSINGS



Columbus Midblock

INTERSECTION/CROSSING RECOMMENDATIONS

- **2 Pedestrian (HAWK) Signals**

- Stanford St / W Gray St
- Stanford St / W Dallas St

- **16 High-Visibility Crosswalks**

- Includes Pedestrian Crossing Signs – Crocker St at W Clay St

- **1 Level C Crosswalks**

- High-Visibility Pavement Markings
- Advanced Warning Signage
- Additional Pavement Markings

- **1 Pedestrian Visibility Obstruction Removal**

- High Historical Intersection Crash Rate
- Crepe Myrtle Removal

- **5 Intersection Accessibility Enhancements**

- Mill and Overlay Asphalt



INTERSECTION/CROSSING RECOMMENDATIONS

- **2 Pedestrian (HAWK) Signals**

- Stanford St / W Gray St
- Stanford St / W Dallas St

- **16 High-Visibility Crosswalks**

- Includes Pedestrian Crossing Signs – Crocker St at W Clay St

- **1 Level C Crosswalks**

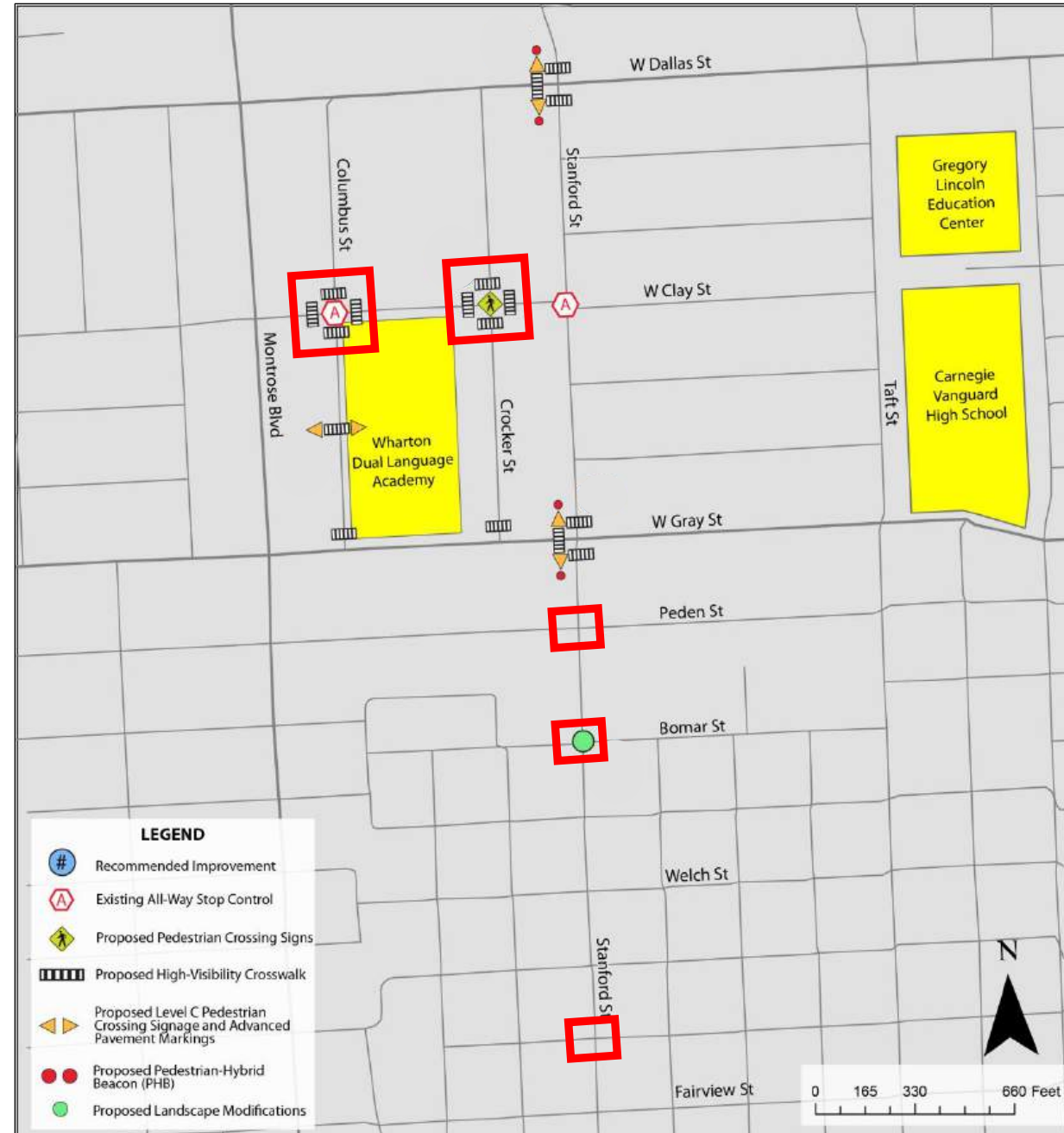
- High-Visibility Pavement Markings
- Advanced Warning Signage
- Additional Pavement Markings

- **1 Sight Distance Obstruction Removal**

- High Historical Intersection Crash Rate
- Crepe Myrtle Removal

- **5 Intersection Accessibility Enhancements**

- Mill and Overlay Asphalt



TREE PRESERVATION



TREE PRESERVATION

BEST MANAGEMENT PRACTICES

- Preserve existing width to avoid damaging roots
- Steel plates to span uneven root systems
- Individualized tree protection



TREE PRESERVATION SUCCESSES

- Over 1,050 total trees within project limits
- All healthy and mature trees will be preserved.
- 16 non-ordinance trees may be impacted.
 - Currently working with Urban Forester to reduce.

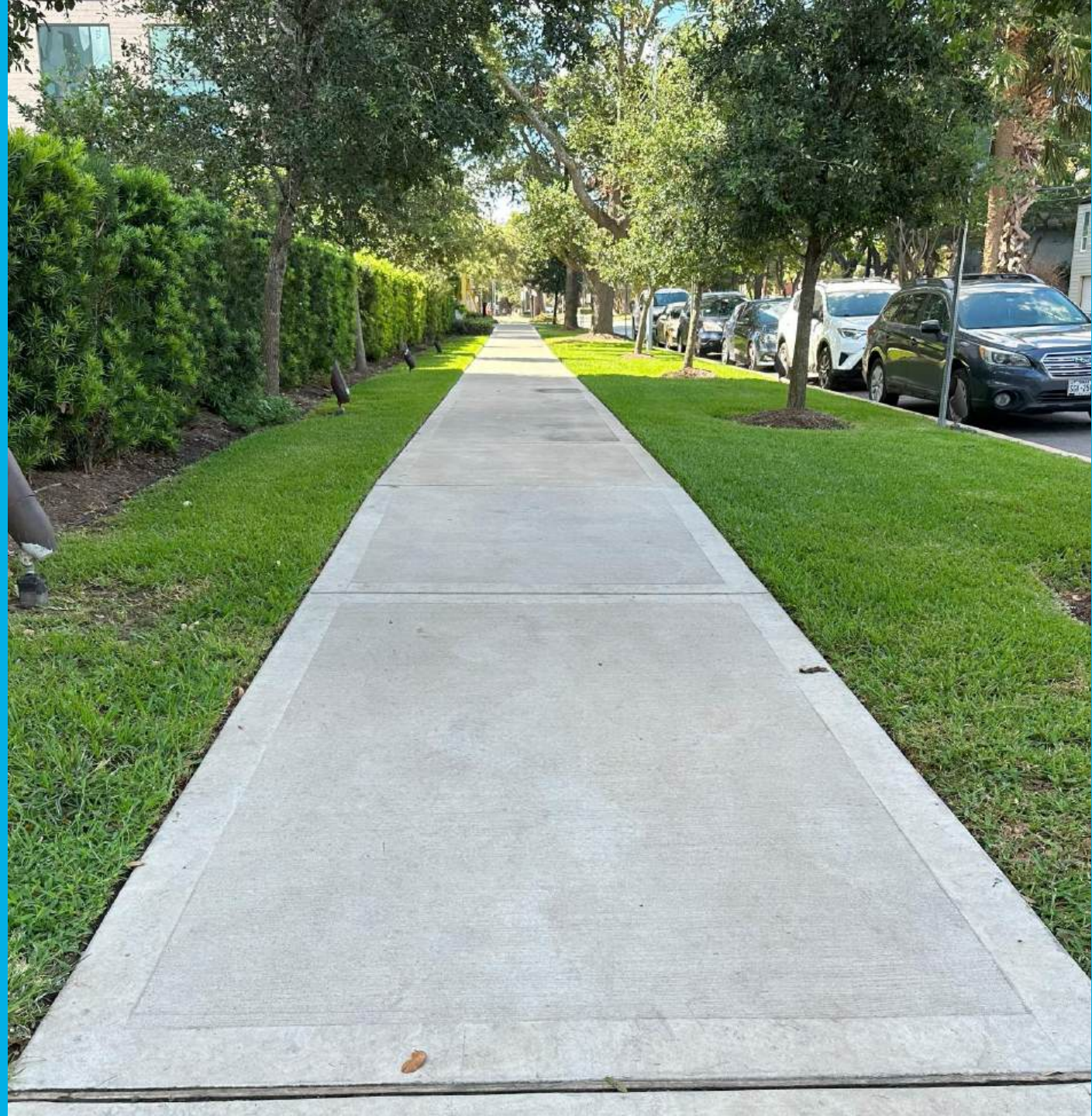


COMPLETED PROJECT EXAMPLES

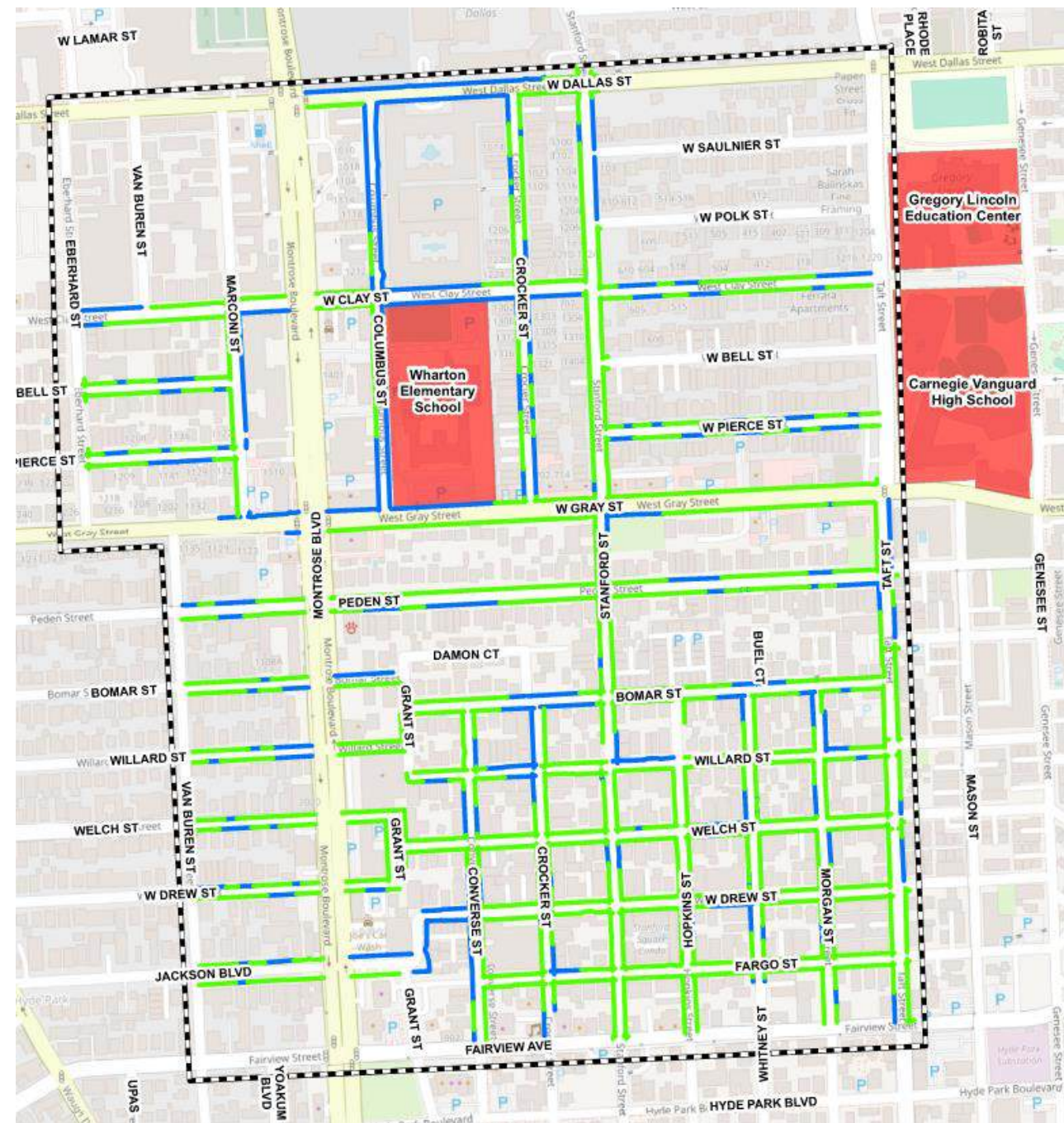
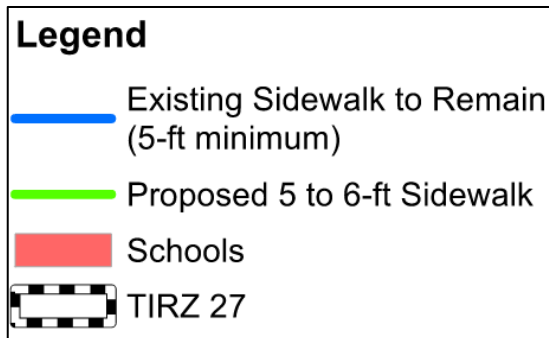
- Hawthorne St & Woodhead St
- Waugh Dr & Commonwealth St
- Gray St
- Montrose Blvd (under construction)
- Cherryhurst (construction soon)



FINAL RESULTS



SIDEWALK CONDITION BY BLOCK AFTER FUTURE CONSTRUCTION



WHAT TO EXPECT DURING CONSTRUCTION?



COORDINATION DURING CONSTRUCTION

- Full-time Inspector
- Door hangers
 - Relevant personnel contact info
 - Schedule
- Sequencing exhibits
- Progress Updates



COORDINATION DURING CONSTRUCTION

PROGRESS REPORT—JULY 2022

HAWTHORNE ST. & WOODHEAD ST.

NEIGHBORHOOD SAFE STREETS IMPROVEMENTS

WBS No. N-T27000-0002-7

PROJECT LOCATION

The project is located in west central Houston, Texas, just north of the US 59 highway. The project limits include:

- Woodhead Street: from West Clay Street to IH-69
- West Clay Street: from Dunlavy Street to Woodhead Street.
- Hawthorne Street: from Woodhead Street to Spur 527.

FUNDING PARTNERS

- Montrose Redevelopment Authority/TIRZ 27
 - 50% of Construction Cost
 - Design and Construction Oversight Cost
- Harris County Precinct 1- Commissioner Rodney Ellis
 - 50% of Construction Cost



PROJECT BACKGROUND

This project was recommended in the Walk+Bike Montrose plan, which identified these corridors to be developed into Neighborhood Safe Streets. A Neighborhood Safe Street is a corridor designed so that roadway users of all ages and abilities, no matter their mode of travel, will feel safe and comfortable traveling along that corridor

PROJECT OBJECTIVES

Convert Woodhead St. and Hawthorne St. corridors into Neighborhood Safe Streets and making the corridors more walkable and safer for all, recognizing the daily walk trips by parents and kids to Lanier Middle School.

PROJECT DESCRIPTION

• Improve Bicycle Safety & Mobility:

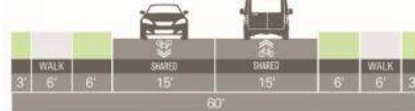
Mill & overlay existing deteriorated asphalt roadway, re-stripe the roadway, replace speed humps with speed cushions, and install curb extensions at intersections to develop a safe, low-stress shared roadway experience for both motorists and bicyclists.

• Improve Pedestrian Facilities:

Promote a pedestrian-friendly environment by incorporating 6-FT wide, continuous, uninterrupted and safe sidewalks accompanied by City compliant curb ramps along the project corridors, within public right-of-way. The sidewalks are only reduced at specific spots to accommodate mature trees. The corridors were physically walked with an Urban Forester to assist with the sidewalk design around any mature trees.



30-FT & 35-FT Curb to Curb Width Section



PROGRESS REPORT—JULY 2022

HAWTHORNE ST. & WOODHEAD ST.

NEIGHBORHOOD SAFE STREETS IMPROVEMENTS

WBS No. N-T27000-0002-7



CONSTRUCTION TIME

- Original Contract Time: 12 Months
- Notice to Proceed Date: March 23, 2022

CONTACT INFORMATION

Construction Manager:

Gauge Engineering
11750 Katy Freeway, Suite 400
Houston, TX 77079



Contractor:

R. Miranda Trucking & Construction
6326 Perch Creek Dr.
Houston, TX 77049

PROGRESS PHOTOS



Curb Installation



Ramp framework installation



Driveway Installation



Sidewalk Concrete Pour

SCHEDULE



DESIGN SCHEDULE



Community Meeting at
Board Meeting
September 2025

Design Phase
Thru Winter (2025 to 2026)

Construction Phase
Spring 2026 to Spring 2027

**Timeline subject to change*

NEXT STEPS

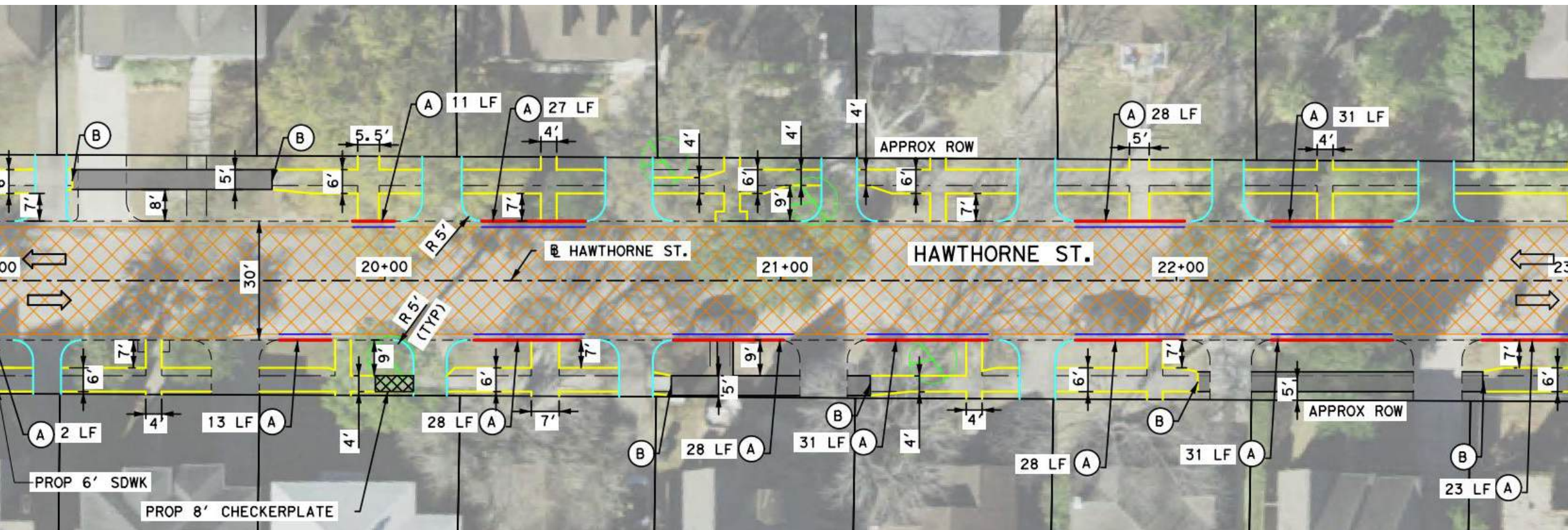


NEXT STEPS

- Receive Feedback from Community
 - Email: info@montrosehtx.org
 - Comment cards
- Finalize Design



LEGEND	
	EXIST LANE
	EXIST CURB
	EXIST DRIVEWAY
	PROPOSED DRIVEWAY
	PROPOSED SIDEWALK
	EXIST SIDEWALK TO REMAIN
	PROP 1.5 INCH ASPHALT MILL AND OVERLAY
	PROP CONCRETE MEDIAN
	EXIST INLET
	PROPOSED RAISED MEDIAN
	REMOVE AND REPLACE CURB AND GUTTER
	MATCH EXIST SIDEWALK
	ADJUST TO GRADE



Thank You!

Contact Us

- info@montrosehtx.org
- montrosehtx.org



MONTROSE
TAX INCREMENT REINVESTMENT ZONE 27